

LEA Name : Upper Darby SD
Address : 4611 Bond Ave
Drexel Hill, PA 19026

County : Delaware
AUN Number : 125239452
LEA Type : SD

Annual Financial Report
Accuracy Certification Statement
For Fiscal Year Ending
6/30/2020

Pennsylvania Department of Education
&
Office of Comptroller Operations

PDE-2056: Intermediate Unit
PDE-2057: School District, AVTS/CTC, Charter School,
and Special Program Jointure

CERTIFICATION: By signing this page I agree that the electronic data submitted is a complete and accurate statement of the financial operations and status of the local education agency for the fiscal year. It has been prepared in accordance with generally accepted accounting principles and established Commonwealth of PA reporting guidelines.

Chief School Administrator Signature

Board Secretary Signature

Date

Date

Craig Rogers

Contact Person

cjrogers@upperdarbysd.org

Contact Person E-mail Address

(610)789-7200

Ext :

Contact Person Telephone Number

Contact Person Fax Number

Audit Certification
Annual Financial Report:
For Fiscal Year Ending **6/30/2020**
(Pursuant to PA School Code Section 218(b))

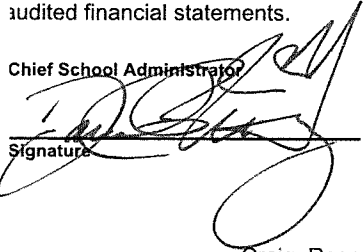
LEA Name : Upper Darby SD
AUN Number : 125239452
County : Delaware

Audit Certification Due: 12/31/2020

This certification is applicable to the Annual Financial Report data submitted through the Consolidated Financial Reporting System (CFRS).

CERTIFICATION: By signing this page I agree that the financial statements of the school have been properly audited as noted above pursuant to Article XIV, and in the auditor's professional opinion, the Annual Financial Report (PDE-2057) submitted through CFRS is materially consistent with the audited financial statements.

Chief School Administrator



Signature

12/3/20
Date

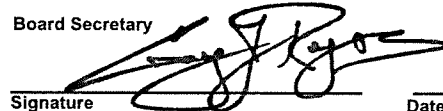
Craig Rogers

Contact Person

cjrogers@upperdarbysd.org

Contact Person E-mail Address

Board Secretary



Signature

12/3/2020
Date

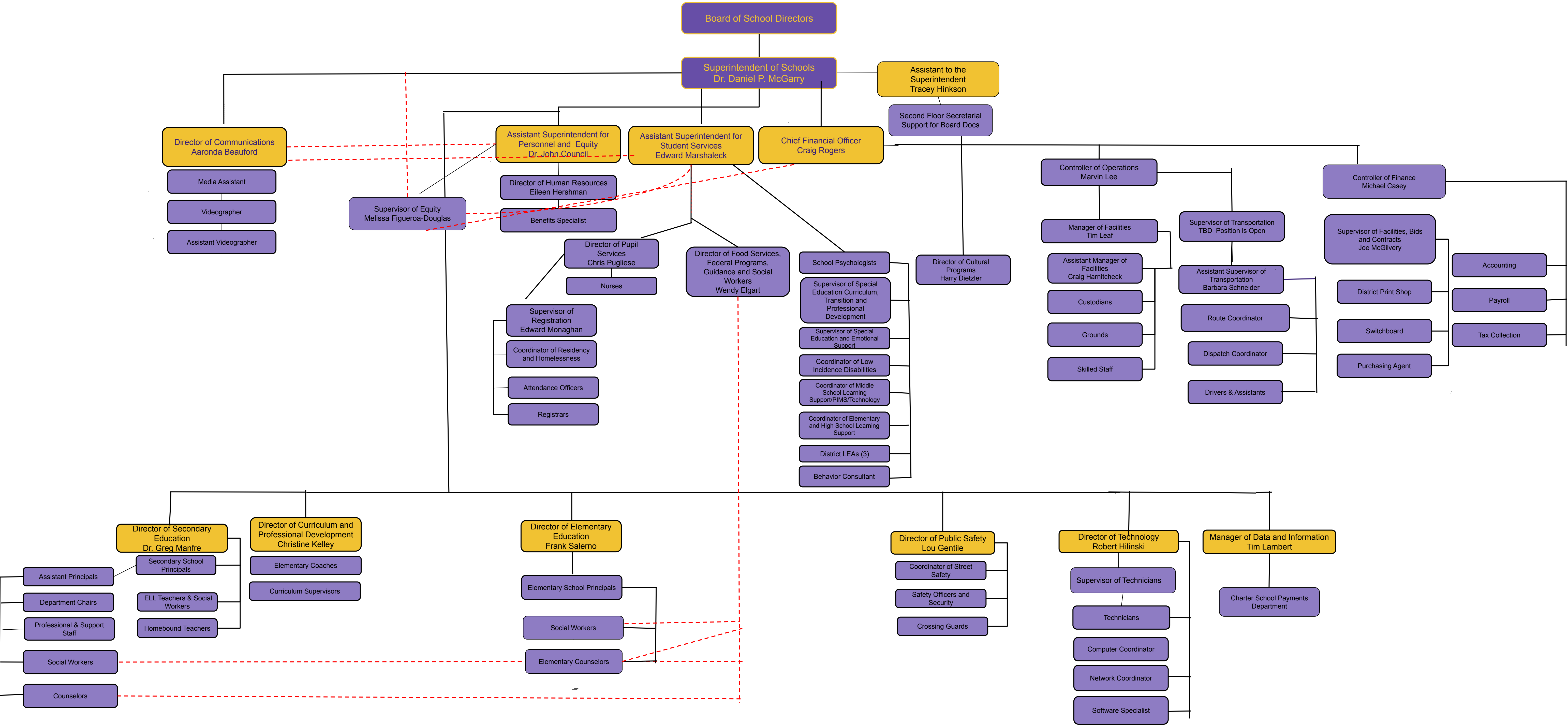
(610)789-7200

Ext :

Contact Person Telephone Number

Contact Person Fax Number

Upper Darby School District
Table of Organization





Book	Policy Manual
Section	600 Finances
Title	Fixed Asset Inventory
Code	622
Status	Active
Adopted	August 10, 2010

Authority

The Board shall have the power and authority to expend district funds for the purpose of providing materials, supplies and equipment necessary to the district's educational program. Likewise, it is incumbent upon the Board to exercise its fiduciary responsibility for the custody and accountability for items purchased through the administration by the adoption of a fixed asset policy, the implementation of which is practical, yet assures accountability.[\[1\]](#)

Definitions

A **fixed asset** is a nonconsumable material purchased with a life expectancy greater than one (1) year with a cost not less than \$1,500. The actual life will be based upon the specific utilization.

The fixed asset inventory will be maintained in accordance with Policy 706.[\[2\]](#)

A **fixed asset equipment item** is any instrument, machine, apparatus or set of articles which meets all of the following:

1. Retains original shape, appearance and/or character with use.
2. Maintains identity through fabrication or incorporation into a different or more complex unit.
3. If damaged, or some of its parts are lost or worn out, it is generally more feasible to repair than replace.
4. Under normal conditions of use, assuming reasonable care and maintenance, can be expected to serve principle purpose for more than a year.

Guidelines

Level of Control

The level of control applied to any item can be thought of as the amount of time and effort spent in keeping track of the item and the amount of information kept about the condition and whereabouts of the item. The level of control applied to an equipment item, usually falls into one (1) of the three (3) broad categories:

1. Little or No Control After Purchase -

Items are of such little value that the cost of implementing procedures to safeguard them, monitor their use, or track their location are not justifiable.

2. Group Control -

Items in this category are of little individual value, but taken as a group, are valuable enough to justify the cost of providing some type of control over their safety, use, location and condition.

3. Individual Control -

Items in this category are of sufficient value to justify applying control measures to each individual item.

It is incumbent on all principals and other building or department administrators to employ all practical means in the care and control of any district asset regardless of value.

Frequency of Inventory

The fixed asset inventory will be updated with regard to changes on an annual basis.

The fixed asset inventory may be physically reconciled on an annual basis.

Individual Responsibility

Each building principal or building administrator is accountable for the fixed asset inventory of his/her building.

Identification tagging for technology equipment will be done in accordance with adopted administrative procedures.

Changes to the inventory will be entered in a centralized manner in accordance with adopted administrative procedures.

Legal

1. 24 P.S. 218

2. Pol. 706

[622-AR-0-GASBStmt34-Final-4-13-2020.pdf \(107 KB\)](#)

[622-AR-1-ValuationOfCapAssets-Final-4-13-2020.pdf \(33 KB\)](#)

[622-AR-2-RecordOfCapAssets-Final-4-13-2020.pdf \(108 KB\)](#)

[622-AR-3-CapAsetTypeUsefulLifeChrt-Final-4-13-2020.pdf \(36 KB\)](#)

<u>Val Number</u>	<u>Description</u>	<u>Justification</u>
30520	Revenue Detail: AFR amount must equal or exceed PDE FAI System amount. 7340, AFR Rev Detail: \$5,141,347.19 7340, PDE FAI System: \$5,142,065.35	\$718.16 was deferred to the 2020-2021 School Year
42420	Expenditure Detail: Total current year 2700-513 expenditure varies from prior year by 10%. Correct the data or enter a justification. 2700-513, AFR Exp Detail: \$37,926.01 2700-513, PY AFR Amount: \$51,093.00	Student's transportation eliminated in current year due to student departure.
50460	SESS - 2420 Medical Services: SESS Schedule amounts for Special Education vary from prior year by 40% or more. Correct the data or enter a justification. SESS Schedule 2420: \$94.41 Prior Year SESS Schedule 2420: \$331.88	Actual incurred expenses, dollar amount variance is deemed immaterial.

LEA : 125239452 Upper Darby SD

Printed 12/4/2020 10:47:39 AM

Amounts Expressed in Whole Dollars		<u>General Fund</u> <u>(10)</u>	<u>Student Sponsored</u> <u>Activity Fund</u> <u>(21)</u>	<u>Public Purpose Trust</u> <u>(27)</u>	<u>Other Compt Approved</u> <u>(28)</u>	<u>Athletic / Activity</u> <u>(29)</u>
Assets And Deferred Outflows Of Resources						
Assets						
0100	Cash and Cash Equivalents	8,506,072				
0110	Investments	35,458,000				
0120	Taxes Receivable	7,504,365				
0130	Due From Other Funds	1,841,127				
0141	Due From Other Governments	2,066,466				
0142	State Revenue Receivable	10,999,217				
0143	Federal Revenue Receivable	3,423,662				
0145	Other Intergovernmental Revenue Receivable					
0146	Due from Primary Government					
0147	Due from Component Unit					
0150	Other Receivables	2,746,780				
0170	Inventories	228,786				
0180	Prepaid Expenses (Expenditures)	2,976				
0190	Other Current Assets					
Total Assets		\$72,777,451				
0910	Deferred Outflows of Resources					
Total Assets And Deferred Outflows Of Resources		\$72,777,451				

LEA : 125239452 Upper Darby SD

Printed 12/4/2020 10:47:39 AM

Amounts Expressed in Whole Dollars		<u>Capital Reserve (690.</u> <u>1850)</u> <u>(31)</u>	<u>Capital Reserve (1431)</u> <u>(32)</u>	<u>Other Capital Projects</u> <u>Fund</u> <u>(39)</u>	<u>Debt Service</u> <u>(40)</u>	<u>Permanent</u> <u>(90)</u>
Assets And Deferred Outflows Of Resources						
Assets						
0100	Cash and Cash Equivalents		3,260,843	224,962		
0110	Investments		1,413,000	1,383,000		
0120	Taxes Receivable					
0130	Due From Other Funds		3,150,000			
0141	Due From Other Governments					
0142	State Revenue Receivable					
0143	Federal Revenue Receivable					
0145	Other Intergovernmental Revenue Receivable					
0146	Due from Primary Government					
0147	Due from Component Unit					
0150	Other Receivables					
0170	Inventories					
0180	Prepaid Expenses (Expenditures)					
0190	Other Current Assets					
Total Assets			\$7,823,843	\$1,607,962		
0910	Deferred Outflows of Resources					
Total Assets And Deferred Outflows Of Resources			\$7,823,843	\$1,607,962		

LEA : 125239452 Upper Darby SD

Printed 12/4/2020 10:47:39 AM

Amounts Expressed in Whole Dollars		<u>Total Governmental</u> <u>Funds</u>
Assets And Deferred Outflows Of Resources		
Assets		
0100 Cash and Cash Equivalents		11,991,877
0110 Investments		38,254,000
0120 Taxes Receivable		7,504,365
0130 Due From Other Funds		4,991,127
0141 Due From Other Governments		2,066,466
0142 State Revenue Receivable		10,999,217
0143 Federal Revenue Receivable		3,423,662
0145 Other Intergovernmental Revenue Receivable		
0146 Due from Primary Government		
0147 Due from Component Unit		
0150 Other Receivables		2,746,780
0170 Inventories		228,786
0180 Prepaid Expenses (Expenditures)		2,976
0190 Other Current Assets		
Total Assets		\$82,209,256
0910 Deferred Outflows of Resources		
Total Assets And Deferred Outflows Of Resources		\$82,209,256

LEA : 125239452 Upper Darby SD

Printed 12/4/2020 10:47:39 AM

Amounts Expressed in Whole Dollars	General Fund (10)	Student Sponsored Activity Fund (21)	Public Purpose Trust (27)	Other Compt Approved (28)	Athletic / Activity (29)
Liabilities And Deferred Inflows Of Resources And Fund Balances					
Liabilities					
0400 Due to Other Funds	3,150,000				
0411 Due to Other Governments					
0412 Due to Primary Government					
0413 Due to Component Unit					
0420 Accounts Payable	4,159,080				
0430 Contracts Payable					
0440 Current Portion of Long-Term Debt					
0450 Short-Term Payables					
0461 Accrued Salaries and Benefits	10,143,672				
0462 Payroll Deductions and Withholding	19,723,621				
0480 Unearned Revenues	1,362,236				
0490 Other Current Liabilities	608,651				
Total Liabilities	\$39,147,260				
0950 Deferred Inflows of Resources	6,711,614				
Fund Balances					
0810 Nonspendable Fund Balance	231,762				
0820 Restricted Fund Balance					
0830 Committed Fund Balance	5,302,808				
0840 Assigned Fund Balance	7,968,728				
0850 Unassigned Fund Balance	13,415,279				
Total Fund Balances	\$26,918,577				
Total Liabilities, Deferred Inflows Of Resources And Fund Balances	\$72,777,451				

LEA : 125239452 Upper Darby SD

Printed 12/4/2020 10:47:39 AM

Amounts Expressed in Whole Dollars		<u>Capital Reserve (690.</u> <u>1850)</u> <u>(31)</u>	<u>Capital Reserve (1431)</u> <u>(32)</u>	<u>Other Capital Projects</u> <u>Fund</u> <u>(39)</u>	<u>Debt Service</u> <u>(40)</u>	<u>Permanent</u> <u>(90)</u>
Liabilities And Deferred Inflows Of Resources And Fund Balances						
Liabilities						
0400	Due to Other Funds					
0411	Due to Other Governments					
0412	Due to Primary Government					
0413	Due to Component Unit					
0420	Accounts Payable			1,381,013		
0430	Contracts Payable					
0440	Current Portion of Long-Term Debt					
0450	Short-Term Payables					
0461	Accrued Salaries and Benefits					
0462	Payroll Deductions and Withholding					
0480	Unearned Revenues					
0490	Other Current Liabilities					
Total Liabilities				\$1,381,013		
0950	Deferred Inflows of Resources					
Fund Balances						
0810	Nonspendable Fund Balance					
0820	Restricted Fund Balance		7,823,843	226,949		
0830	Committed Fund Balance					
0840	Assigned Fund Balance					
0850	Unassigned Fund Balance					
Total Fund Balances			\$7,823,843	\$226,949		
Total Liabilities, Deferred Inflows Of Resources And Fund Balances			\$7,823,843	\$1,607,962		

LEA : 125239452 Upper Darby SD

Printed 12/4/2020 10:47:39 AM

Amounts Expressed in Whole Dollars		<u>Total Governmental</u> <u>Funds</u>
Liabilities And Deferred Inflows Of Resources And Fund Balances		
Liabilities		
0400 Due to Other Funds		3,150,000
0411 Due to Other Governments		
0412 Due to Primary Government		
0413 Due to Component Unit		
0420 Accounts Payable		5,540,093
0430 Contracts Payable		
0440 Current Portion of Long-Term Debt		
0450 Short-Term Payables		
0461 Accrued Salaries and Benefits		10,143,672
0462 Payroll Deductions and Withholding		19,723,621
0480 Unearned Revenues		1,362,236
0490 Other Current Liabilities		608,651
Total Liabilities		\$40,528,273
0950 Deferred Inflows of Resources		6,711,614
Fund Balances		
0810 Nonspendable Fund Balance		231,762
0820 Restricted Fund Balance		8,050,792
0830 Committed Fund Balance		5,302,808
0840 Assigned Fund Balance		7,968,728
0850 Unassigned Fund Balance		13,415,279
Total Fund Balances		\$34,969,369
Total Liabilities, Deferred Inflows Of Resources And Fund Balances		\$82,209,256

LEA : 125239452 Upper Darby SD

Printed 12/4/2020 10:47:47 AM

Amounts Expressed in Whole Dollars	<u>General Fund</u> <u>(10)</u>	<u>Student Sponsored</u> <u>Activity Fund</u> <u>(21)</u>	<u>Public Purpose Trust</u> <u>(27)</u>	<u>Other Compt Approved</u> <u>(28)</u>	<u>Athletic / Activity</u> <u>(29)</u>
Revenues					
6000 Revenue from Local Sources	111,763,803				
7000 Revenue from State Sources	88,926,839				
8000 Revenue from Federal Sources	7,369,949				
Total Revenues	\$208,060,591				
Expenditures					
1000 Instruction	136,099,881				
2000 Support Services	57,061,951				
3000 Operation of Non-Instructional Services	4,866,270				
4000 Facilities Acquisition, Construction and Improvement Services	2,266,753				
5110 Debt Service	7,188,652				
5130 Refund of Prior Year Revenues / Receipts	1,454				
Total Expenditures	\$207,484,961				
Excess (Deficiency) Of Revenues Over Expenditures	\$575,630				
Other Financing Sources (Uses)					
9110 Face Value of Bonds Issued					
9120 Proceeds from Refunding of Bonds					
9130 Bond Premiums					
9200 Proceeds from Extended-Term Financing	2,188,808				
9300 Interfund Transfers - IN	894,035				
9400 Sale of or Compensation for Loss of Fixed Assets					
9710 Transfers from Component Units					
9720 Transfers from Primary Governments					
9910 Other Financing Sources Not Listed in the 9000 Series					
9990 Insurance Recoveries					
5120 Debt Service – Refunded Bonds					
5150 Bond Discounts					
5200 Interfund Transfers – Out	3,150,000				
5300 Transfers Out to Component Units/Primary Governments					
Total Other Financing Sources (Uses)	(\$67,157)				

LEA : 125239452 Upper Darby SD

Printed 12/4/2020 10:47:47 AM

Amounts Expressed in Whole Dollars	<u>Capital Reserve (690.1850)</u> <u>(31)</u>	<u>Capital Reserve (1431)</u> <u>(32)</u>	<u>Other Capital Projects</u> <u>Fund</u> <u>(39)</u>	<u>Debt Service</u> <u>(40)</u>	<u>Permanent</u> <u>(90)</u>
Revenues					
6000 Revenue from Local Sources		34,372	47,684		
7000 Revenue from State Sources					
8000 Revenue from Federal Sources					
Total Revenues		\$34,372	\$47,684		
Expenditures					
1000 Instruction					
2000 Support Services			293,837		
3000 Operation of Non-Instructional Services					
4000 Facilities Acquisition, Construction and Improvement Services		513,501	6,067,049		
5110 Debt Service					
5130 Refund of Prior Year Revenues / Receipts					
Total Expenditures		\$513,501	\$6,360,886		
Excess (Deficiency) Of Revenues Over Expenditures		(\$479,129)	(\$6,313,202)		
Other Financing Sources (Uses)					
9110 Face Value of Bonds Issued					
9120 Proceeds from Refunding of Bonds					
9130 Bond Premiums					
9200 Proceeds from Extended-Term Financing					
9300 Interfund Transfers - IN		3,150,000			
9400 Sale of or Compensation for Loss of Fixed Assets					
9710 Transfers from Component Units					
9720 Transfers from Primary Governments					
9910 Other Financing Sources Not Listed in the 9000 Series					
9990 Insurance Recoveries					
5120 Debt Service – Refunded Bonds					
5150 Bond Discounts					
5200 Interfund Transfers – Out					
5300 Transfers Out to Component Units/Primary Governments					
Total Other Financing Sources (Uses)		\$3,150,000			

Amounts Expressed in Whole Dollars		<u>Total Governmental Funds</u>
Revenues		
6000	Revenue from Local Sources	111,845,859
7000	Revenue from State Sources	88,926,839
8000	Revenue from Federal Sources	7,369,949
Total Revenues		\$208,142,647
Expenditures		
1000	Instruction	136,099,881
2000	Support Services	57,355,788
3000	Operation of Non-Instructional Services	4,866,270
4000	Facilities Acquisition, Construction and Improvement Services	8,847,303
5110	Debt Service	7,188,652
5130	Refund of Prior Year Revenues / Receipts	1,454
Total Expenditures		\$214,359,348
Excess (Deficiency) Of Revenues Over Expenditures		(\$6,216,701)
Other Financing Sources (Uses)		
9110	Face Value of Bonds Issued	
9120	Proceeds from Refunding of Bonds	
9130	Bond Premiums	
9200	Proceeds from Extended-Term Financing	2,188,808
9300	Interfund Transfers - IN	4,044,035
9400	Sale of or Compensation for Loss of Fixed Assets	
9710	Transfers from Component Units	
9720	Transfers from Primary Governments	
9910	Other Financing Sources Not Listed in the 9000 Series	
9990	Insurance Recoveries	
5120	Debt Service – Refunded Bonds	
5150	Bond Discounts	
5200	Interfund Transfers – Out	3,150,000
5300	Transfers Out to Component Units/Primary Governments	
Total Other Financing Sources (Uses)		\$3,082,843

Amounts Expressed in Whole Dollars		<u>General Fund</u> <u>(10)</u>	<u>Student Sponsored</u> <u>Activity Fund</u> <u>(21)</u>	<u>Public Purpose Trust</u> <u>(27)</u>	<u>Other Compt Approved</u> <u>(28)</u>	<u>Athletic / Activity</u> <u>(29)</u>
Special And Extraordinary Items						
9920	Special Items – Gains					
9930	Extraordinary Items – Gains					
5520	Special Items – Losses					
5530	Extraordinary Items – Losses					
Net Change In Fund Balances		\$508,473				
Fund Balance						
0001	Fund Balance - Beginning of Fiscal Year	26,410,104				
Fund Balance - End Of Year		\$26,918,577				

Amounts Expressed in Whole Dollars		<u>Capital Reserve (690.</u> <u>1850)</u> <u>(31)</u>	<u>Capital Reserve (1431)</u> <u>(32)</u>	<u>Other Capital Projects</u> <u>Fund</u> <u>(39)</u>	<u>Debt Service</u> <u>(40)</u>	<u>Permanent</u> <u>(90)</u>
Special And Extraordinary Items						
9920	Special Items – Gains					
9930	Extraordinary Items – Gains					
5520	Special Items – Losses					
5530	Extraordinary Items – Losses					
Net Change In Fund Balances			\$2,670,871	(\$6,313,202)		
Fund Balance						
0001	Fund Balance - Beginning of Fiscal Year		5,152,972	6,540,150		
Fund Balance - End Of Year			\$7,823,843	\$226,948		

Amounts Expressed in Whole Dollars		<u>Total Governmental</u> <u>Funds</u>
Special And Extraordinary Items		
9920	Special Items – Gains	
9930	Extraordinary Items – Gains	
5520	Special Items – Losses	
5530	Extraordinary Items – Losses	
Net Change In Fund Balances		(\$3,133,858)
Fund Balance		
0001	Fund Balance - Beginning of Fiscal Year	38,103,226
Fund Balance - End Of Year		\$34,969,368

LEA : 125239452 Upper Darby SD

Printed 12/4/2020 10:47:52 AM

Amounts Expressed in Whole Dollars	<u>Food Service</u> <u>(51)</u>	<u>Child Care</u> <u>Operations</u> <u>(52)</u>	<u>Other Enterprise</u> <u>(58)</u>	<u>TOTAL</u>	<u>Internal Service</u> <u>(60)</u>
Assets And Deferred Outflows Of Resources					
Current Assets					
0100 Cash and Cash Equivalents	3,419,800			3,419,800	
0110 Investments	514,382			514,382	
0130 Due From Other Funds					
0141 Due From Other Governments					
0142 State Revenue Receivable	14,842			14,842	
0143 Federal Revenue Receivable	384,539			384,539	
0146 Due from Primary Government					
0147 Due from Component Unit					
0150 Other Receivables	430,434			430,434	
0170 Inventories	39,641			39,641	
0180 Prepaid Expenses (Expenditures)					
0190 Other Current Assets					
Total Current Assets	\$4,803,638			\$4,803,638	
Noncurrent Assets					
0211 Land					
0212 Site Improvements (Net)					
0220 Buildings and Building Improvements (Net)					
0230 Machinery, Equipment and Furniture (Net)	1,027,314			1,027,314	
0250 Construction in Progress					
0260 Long Term Prepayments					
0290 Other Noncurrent Assets					
Total Noncurrent Assets	\$1,027,314			\$1,027,314	
0910 Deferred Outflows of Resources					
Total Assets And Deferred Outflows Of Resources	\$5,830,952			\$5,830,952	

LEA : 125239452 Upper Darby SD

Printed 12/4/2020 10:47:52 AM

Amounts Expressed in Whole Dollars	Food Service (51)	Child Care Operations (52)	Other Enterprise (58)	TOTAL	Internal Service (60)
Liabilities And Deferred Inflows Of Resources And Net Position					
Current Liabilities					
0400 Due to Other Funds	1,841,127			1,841,127	
0411 Due to Other Governments					
0413 Due to Component Unit					
0420 Accounts Payable	253,761			253,761	
0430 Contracts Payable					
0440 Current Portion of Long-Term Debt					
0450 Short-Term Payables					
0461 Accrued Salaries and Benefits					
0462 Payroll Deductions and Withholding					
0480 Unearned Revenues					
0490 Other Current Liabilities	16,555			16,555	
Total Current Liabilities	\$2,111,443			\$2,111,443	
Noncurrent Liabilities					
0510 Bonds Payable					
0520 Extended-Term Financing Agreements Payable					
0530 Lease-Purchase Obligations					
0540 Accumulated Compensated Absences					
0550 Authority Lease Obligations					
0560 Other Post-Employment Benefits (OPEB)					
0570 Net Pension Liability					
0599 Other Noncurrent Liabilities					
Total Noncurrent Liabilities					
Total Liabilities	\$2,111,443			\$2,111,443	
0950 Deferred Inflows of Resources					
Net Position					
0791 Net Investment in Capital Assets	1,027,314			1,027,314	
0008 Restricted Net Position (0792 – 0798)					
0799 Unrestricted Net Position	2,692,195			2,692,195	
Total Net Position	\$3,719,509			\$3,719,509	
Total Liabilities And Deferred Inflows Of Resources And Net Position	\$5,830,952			\$5,830,952	

Amounts Expressed in Whole Dollars	<u>Food Service</u> <u>(51)</u>	<u>Child Care Operations</u> <u>(52)</u>	<u>Other Enterprise</u> <u>(58)</u>	<u>TOTAL</u>	<u>Internal Service</u> <u>(60)</u>
Operating Revenues					
6600 Food Service Revenue	168,307			168,307	
0071 Charges for Services					
0072 Other Operating Revenue					
Total Operating Revenues	\$168,307			\$168,307	
Operating Expenses					
100 Personnel Services – Salaries					
200 Personnel Services – Employee Benefits					
300 Purchased Professional and Technical Services					
400 Purchased Property Services	59,113			59,113	
500 Other Purchased Services	5,603,843			5,603,843	
600 Supplies	387,969			387,969	
740 Depreciation	143,774			143,774	
810 Dues and Fees					
890 Miscellaneous Expenditures					
Total Operating Expenses	\$6,194,699			\$6,194,699	
Operating Income (Loss)	(\$6,026,392)			(\$6,026,392)	
Non Operating Revenues (Expenses)					
6500 Earnings on Investments	26,856			26,856	
6920 Contributions and Donations from Private Sources					
6930 Gains or Losses on Sale of Fixed Assets					
6991 Refunds of a Prior Year Expenditure					
7000 Revenue from State Sources	276,700			276,700	
8000 Revenue from Federal Sources	6,650,706			6,650,706	
9990 Insurance Recoveries					
820 Claims and Judgments Against the LEA					
830 Interest					
TOTAL Non Operating Revenues (Expenses)	\$6,954,262			\$6,954,262	
Income (Loss) Before Contributions And Transfers	\$927,870			\$927,870	

Amounts Expressed in Whole Dollars	<u>Food Service</u> <u>(51)</u>	<u>Child Care Operations</u> <u>(52)</u>	<u>Other Enterprise</u> <u>(58)</u>	<u>TOTAL</u>	<u>Internal Service</u> <u>(60)</u>
Contributions, Transfers, and Special and Extraordinary Items					
5200 Interfund Transfers – Out	894,035			894,035	
5300 Transfers Out to Component Units/Primary Governments					
5520 Special Items – Losses					
5530 Extraordinary Items – Losses					
9300 Interfund Transfers - IN					
9500 Capital Contributions					
9700 Transfers IN From Component Units/Primary Governments					
9920 Special Items – Gains					
9930 Extraordinary Items – Gains					
Change In Net Position	\$33,835			\$33,835	
0002 Net Position - Beginning of Fiscal Year	3,685,674			3,685,674	
0003 Accounting Changes / Residual Equity Transfers					
Net Position - End Of Year	\$3,719,509			\$3,719,509	

LEA : 125239452 Upper Darby SD

Printed 12/4/2020 10:48:16 AM

Amounts Expressed in Whole Dollars	Food Service (51)	Child Care Operations (52)	Other Enterprise (58)	TOTAL	Internal Service(60)
Cash Flows From Operating Activities					
0011 Cash Receipts From Users	158,515			158,515	
0012 Cash Receipts From Assessments Made to Other Funds					
0013 Cash Receipts From Earnings on Investments					
0014 Cash Receipts From Other Operating Revenue					
0015 Cash Payments To Employees For Services					
0016 Cash Payments For Insurance Claims					
0017 Cash Payments To Suppliers For Goods and Services	5,886,250			5,886,250	
0018 Cash Payments For Other Operating Expenses					
Net Cash Provided By (Used For) Operating Activities	(\$5,727,735)			(\$5,727,735)	
Cash Flows From Non-Capital Financing Activities					
0021 Receipts From Local Sources - 6000					
0022 Receipts From State Sources - 7000	272,387			272,387	
0023 Receipts From Federal Sources -8000	6,222,474			6,222,474	
0024 Notes and Loans Received (Repaid)					
0025 Interest Paid on Notes/Loans - 5100-830					
0026 Operating Transfers In (Out)/Residual Equity Trans					
0027 Operating Transfers In (Out) Primary Government / Comp Unit					
0028 Receipts From Refund of Prior Year Expenditures - 6991					
0029 Special and Extraordinary Gains (losses)					
0030 Receipts from Insurance Recoveries -9990					
Net Cash Prov By (Used for) Non-Capital Financing Activities	\$6,494,861			\$6,494,861	
Cash Flows From Capital and Related Financing Activities					
0031 Payments For Fac Acq, Const, and Imp - 4000	(262,754)			(262,754)	
0032 Gain / (Loss) on Sale of Fixed Assets - 6930					
0033 Proceeds From Extended Term Financing - 9200					
0034 Principal Paid on Financing Agreements					
0035 Interest Paid on Financing Agreements - 5100-830					
0036 (Inc) Dec in Contributed Capital					
Net Cash Prov By (Used for) Capital and Related Financing Activities	(\$262,754)			(\$262,754)	
Cash Flows From Investing Activities					
0041 Earnings on Investments - 6500	26,856			26,856	
0042 Purchase of Inv Securities / Deposits to Inv Pools	(7,255)			(7,255)	
0043 Receipts From Investment Pool Withdrawals					
0044 Proceeds from Sale and Maturity of Inv Securities					

LEA : 125239452 Upper Darby SD

Printed 12/4/2020 10:48:16 AM

0045 Loans Received (Paid)

Net Cash Prov By (Used for) Investing Activities	\$19,601	\$19,601
--	----------	----------

LEA : 125239452 Upper Darby SD

Printed 12/4/2020 10:48:16 AM

	Food Service (51)	Child Care Operations (52)	Other Enterprise (58)	TOTAL	Internal Service (60)
Net Increase (Decrease) in Cash Flows	523,973			523,973	
0004 Cash and Cash Equivalents Beginning of Year	2,895,827			2,895,827	
Cash and Cash Equivalents at Year End	\$3,419,800			\$3,419,800	
Reconciliation of Operating Income (Loss) To Net Cash Provided by (Used For) Operating Activities					
0005 Operating Income (Loss) per REP	(6,026,392)			(6,026,392)	
Adjustments					
0051 Depreciation and Net Amortization	143,774			143,774	
0052 Provision for Uncollectible Accounts					
0053 Other Adjustments	275,941			275,941	
Effect of Changes in Assets, Liabilities, Deferred Outflows and Deferred Inflows					
0054 (Inc) Dec In Accounts Receivable (0120-0150)	1,549			1,549	
0055 Advances to Other Funds (0160)					
0056 (Inc) Dec in Inventories (0170)	85,193			85,193	
0057 (Inc) Dec in Prepaid Expenses (0180)					
0058 (Inc) Dec in Other Current or Noncurrent Assets					
0064 Deferred Outflows (0910)					
0059 Inc (Dec) in Accounts Payable (0400-0450)	(196,459)			(196,459)	
0060 Inc (Dec) in Accrued Salaries/Benefits (0461)					
0065 Inc (Dec) in Net Pension Liabilities (0570)					
0066 Inc (Dec) in Other Postemp Benefit Oblig (0560)					
0061 Inc (Dec) in Payroll Deductions/Withholding (0462)					
0062 Inc (Dec) in Unearned Revenue (0480)					
0063 Inc (Dec) in Other Current or Noncurrent Liabilities	(11,342)			(11,342)	
0067 Deferred Inflows (0950)					
Total Adjustments	\$298,656			\$298,656	
Cash Provided By (Used for) Total	(\$5,727,736)			(\$5,727,736)	

COMBINED STATEMENT OF CASH FLOWS
SCHEDULE OF NONCASH INVESTING, CAPITAL, AND FINANCING ACTIVITIES

Explanation of Transaction and Balance Sheet Effect	Amount
Total	

LEA : 125239452 Upper Darby SD

Printed 12/4/2020 10:48:20 AM

Amounts Expressed in Whole Dollars		<u>Private Purpose Trust</u> <u>(71)</u>	<u>Investment Trust</u> <u>(72)</u>	<u>Pension Trust</u> <u>(73)</u>	<u>Student Activity Custodial</u> <u>(81)</u>
Assets And Deferred Outflows Of Resources					
Assets					
0100	Cash and Cash Equivalents	584,047			250,680
0110	Investments				
0130	Due From Other Funds				
0140	Due from Other Governments, Primary Government and Component Units				
0150	Other Receivables				
0170	Inventories				
0180	Prepaid Expenses (Expenditures)				
0190	Other Current Assets				
0220	Buildings and Building Improvements (Net)				
0230	Machinery, Equipment and Furniture (Net)				
Total Assets		\$584,047			\$250,680
0910	Deferred Outflows of Resources				
Total Assets And Deferred Outflows Of Resources		\$584,047			\$250,680

LEA : 125239452 Upper Darby SD

Printed 12/4/2020 10:48:20 AM

Amounts Expressed in Whole Dollars		<u>Other Custodial</u> <u>(89)</u>	<u>Fiduciary Component Units</u> <u>(98)</u>	<u>Total Fiduciary Funds</u>
Assets And Deferred Outflows Of Resources				
Assets				
0100	Cash and Cash Equivalents	309,924		1,144,651
0110	Investments			
0130	Due From Other Funds			
0140	Due from Other Governments, Primary Government and Component Units			
0150	Other Receivables			
0170	Inventories			
0180	Prepaid Expenses (Expenditures)			
0190	Other Current Assets			
0220	Buildings and Building Improvements (Net)			
0230	Machinery, Equipment and Furniture (Net)			
Total Assets		\$309,924		\$1,144,651
0910	Deferred Outflows of Resources			
Total Assets And Deferred Outflows Of Resources		\$309,924		\$1,144,651

LEA : 125239452 Upper Darby SD

Printed 12/4/2020 10:48:20 AM

Amounts Expressed in Whole Dollars		<u>Private Purpose Trust</u>	<u>Investment Trust</u>	<u>Pension Trust</u>	<u>Student Activity Custodial</u>
		<u>(71)</u>	<u>(72)</u>	<u>(73)</u>	<u>(81)</u>
Liabilities, Deferred Inflows Of Resources And Net Position					
Liabilities					
0400	Due to Other Funds				
0410	Due to Other Governments, Primary Government and Component Units				
0420	Accounts Payable				
0430	Contracts Payable				
0450	Short-Term Payables				
0460	Payroll Accruals and Withholdings				
0480	Unearned Revenues				
0490	Other Current Liabilities				250,680
Total Liabilities					\$250,680
0950	Deferred Inflows of Resources				
Net Position					
0791	Net Investment in Capital Assets				
0009	Restricted Net Position (0792 – 0798)	584,047			
0799	Unrestricted Net Position				
Total Net Position		\$584,047			
Total Liabilities, Deferred Inflows Of Resources And Net Position		\$584,047			\$250,680

LEA : 125239452 Upper Darby SD

Printed 12/4/2020 10:48:20 AM

Amounts Expressed in Whole Dollars	<u>Other Custodial</u> <u>(89)</u>	<u>Fiduciary Component Units</u> <u>(98)</u>	<u>Total Fiduciary Funds</u>
Liabilities, Deferred Inflows Of Resources And Net Position			
Liabilities			
0400 Due to Other Funds			
0410 Due to Other Governments, Primary Government and Component Units			
0420 Accounts Payable			
0430 Contracts Payable			
0450 Short-Term Payables			
0460 Payroll Accruals and Withholdings			
0480 Unearned Revenues			
0490 Other Current Liabilities	309,924		560,604
Total Liabilities	\$309,924		\$560,604
0950 Deferred Inflows of Resources			
Net Position			
0791 Net Investment in Capital Assets			
0009 Restricted Net Position (0792 – 0798)			584,047
0799 Unrestricted Net Position			
Total Net Position			\$584,047
Total Liabilities, Deferred Inflows Of Resources And Net Position	\$309,924		\$1,144,651

LEA : 125239452 Upper Darby SD

Printed 12/4/2020 10:48:25 AM

Amounts Expressed in Whole Dollars	<u>Private Purpose Trust</u> <u>(71)</u>	<u>Investment Trust</u> <u>(72)</u>	<u>Pension Trust</u> <u>(73)</u>	<u>Student Activity</u> <u>Custodial</u> <u>(81)</u>	<u>Other Custodial</u> <u>(89)</u>	<u>Fiduciary Component</u> <u>Units</u> <u>(98)</u>
Additions						
0091 Gifts and Contributions	147,154					
0095 Net Investment Earnings	4,952					
0092 Other Additions						
Deductions						
0093 Scholarships Awarded	215,875					
0094 Other Deductions						
Change In Net Position	(\$63,769)					
0006 Net Position – Beginning of Fiscal Year	647,816					
0007 Net Position Held in Trust for Pension Benefits						
Net Position - End of Fiscal Year	\$584,047					

LEA : 125239452 Upper Darby SD

Printed 12/4/2020 10:48:25 AM

Amounts Expressed in Whole Dollars		<u>Total Fiduciary</u>
		<u>Funds</u>
Additions		
0091	Gifts and Contributions	147,154
0095	Net Investment Earnings	4,952
0092	Other Additions	
Deductions		
0093	Scholarships Awarded	215,875
0094	Other Deductions	
Change In Net Position		(\$63,769)
0006	Net Position – Beginning of Fiscal Year	647,816
0007	Net Position Held in Trust for Pension Benefits	
Net Position - End of Fiscal Year		\$584,047

LEA : 125239452 Upper Darby SD

General Fund (10)

Printed 12/4/2020 10:48:30 AM

Page - 1 of 4

	Revenue Reported In Current Year	Current Year Tax Accrual	Prior Year Tax Accrual	Taxes Collected In Current Year
Revenue from Local Sources				
6111 Current Real Estate Taxes	98,111,757.64			98,111,757.64
6112 Interim Real Estate Taxes	193,125.60	17,514.27	6,006.34	181,617.67
6153 Current Act 511 Real Estate Transfer Taxes	3,772,114.90	153,452.92	596,874.75	4,215,536.73
6411 Delinquent Real Estate Taxes	5,274,617.20	621,783.29	1,499,063.35	6,151,897.26
6500 Earnings on Investments	860,886.97			
6700 Revenues from LEA Activities	29,131.00			
6831 Federal Revenue Received from Other Pennsylvania Public LEAs	7,363.00			
6832 Federal IDEA Revenue Received as Pass Through	1,896,039.00			
6910 Rentals	29,000.00			
6920 Contributions and Donations from Private Sources	1,000.00			
6942 Summer School Tuition	48,445.12			
6944 Receipts from Other LEAs in Pennsylvania - Education	144,262.06			
6980 Revenue from Community Services Activities	1,147,535.62			
6991 Refunds of a Prior Year Expenditure	47,025.13			
6999 Other Revenues Not Specified Above	201,499.43			
TOTAL Revenue from Local Sources	\$111,763,802.67	\$792,750.48	\$2,101,944.44	\$108,660,809.30

	Revenue Reported In Current Year			
Revenue from State Sources				
7111 Basic Education Funding-Formula	40,035,982.36			
7160 Tuition for Orphans Subsidy	433,717.80			
7271 Special Education funds for School-Aged Pupils	8,888,216.51			
7311 Pupil Transportation Subsidy	2,325,229.00			
7312 Nonpublic and Charter School Pupil Transportation Subsidy	370,755.00			
7320 Rental and Sinking Fund Payments / Building Reimbursement Subsidy	1,405,871.73			
7330 Health Services (Medical, Dental, Nurse, Act 25)	273,968.73			
7340 State Property Tax Reduction Allocation	5,141,347.19			
7361 School Safety and Security Grants	1,165,818.45			
7505 Ready to Learn Block Grant	2,073,956.00			
7521 Continuity of Education and Equity Grants	491,175.90			
7599 Other State Revenue Not Listed Elsewhere in the 7000 Series	2,627,619.76			
7810 State Share of Social Security and Medicare Taxes	3,859,511.34			
7820 State Share of Retirement Contributions	19,833,669.08			
TOTAL Revenue from State Sources	\$88,926,838.85			

	Revenue Reported In Current Year			
<u>Revenue from Federal Sources</u>				
8514 NCLB, Title I - Improving the Academic Achievement of the Disadvantaged	4,995,608.15			
8515 NCLB, Title II - Preparing, Training and Recruiting High Quality Teachers and Principals	667,630.23			
8516 NCLB, Title III - Language Instruction for Limited English Proficient and Immigrant Students	192,512.42			
8517 NCLB, Title IV - 21St Century Schools	150,688.00			
8732 ARRA - Qualified School Construction Bonds (QSCB)	248,946.71			
8810 School-Based Access Medicaid Reimbursement Program (SBAP) Reimbursements (Access)	991,793.39			
8820 Medical Assistance Reimbursement for Administrative Claiming (Quarterly) Program	122,770.38			
TOTAL Revenue from Federal Sources	\$7,369,949.28			

	Revenue Reported In Current Year			
<u>Other Financing Sources</u>				
9290 Other Extended-Term Financing Proceeds	2,188,808.38			
9350 Enterprise Fund Transfers	894,035.09			
TOTAL Other Financing Sources	\$3,082,843.47			
TOTAL FROM ALL SOURCES	\$211,143,434.27	\$792,750.48	\$2,101,944.44	\$108,660,809.30

LEA : 125239452 Upper Darby SD

Printed 12/4/2020 10:48:35 AM

	General Fund (10)	Student Sponsored Activity Fund (21)	Public Purpose Trust (27)	Other Compt Approved (28)	Athletic / Activity (29)	Capital Reserve (690, 1850) (31)
6000 Revenue from Local Sources						
6111 Current Real Estate Taxes	98,111,757.64					
6112 Interim Real Estate Taxes	193,125.60					
6153 Current Act 511 Real Estate Transfer Taxes	3,772,114.90					
6411 Delinquent Real Estate Taxes	5,274,617.20					
6500 Earnings on Investments	860,886.97					
6700 Revenues from LEA Activities	29,131.00					
6831 Federal Revenue Received from Other Pennsylvania Public LEAs	7,363.00					
6832 Federal IDEA Revenue Received as Pass Through	1,896,039.00					
6910 Rentals	29,000.00					
6920 Contributions and Donations from Private Sources	1,000.00					
6942 Summer School Tuition	48,445.12					
6944 Receipts from Other LEAs in Pennsylvania - Education	144,262.06					
6980 Revenue from Community Services Activities	1,147,535.62					
6991 Refunds of a Prior Year Expenditure	47,025.13					
6999 Other Revenues Not Specified Above	201,499.43					
6000 Total Revenue from Local Sources	\$111,763,802.67					
7000 Revenue from State Sources						
7111 Basic Education Funding-Formula	40,035,982.36					
7160 Tuition for Orphans Subsidy	433,717.80					
7271 Special Education funds for School-Aged Pupils	8,888,216.51					
7311 Pupil Transportation Subsidy	2,325,229.00					
7312 Nonpublic and Charter School Pupil Transportation Subsidy	370,755.00					
7320 Rental and Sinking Fund Payments / Building Reimbursement Subsidy	1,405,871.73					
7330 Health Services (Medical, Dental, Nurse, Act 25)	273,968.73					
7340 State Property Tax Reduction Allocation	5,141,347.19					
7361 School Safety and Security Grants	1,165,818.45					
7505 Ready to Learn Block Grant	2,073,956.00					
7521 Continuity of Education and Equity Grants	491,175.90					
7599 Other State Revenue Not Listed Elsewhere in the 7000 Series	2,627,619.76					
7810 State Share of Social Security and Medicare Taxes	3,859,511.34					
7820 State Share of Retirement Contributions	19,833,669.08					
7000 Total Revenue from State Sources	\$88,926,838.85					
8000 Revenue from Federal Sources						
8514 NCLB, Title I - Improving the Academic Achievement of the Disadvantaged	4,995,608.15					

LEA : 125239452 Upper Darby SD

Printed 12/4/2020 10:48:35 AM

	<u>Capital Reserve</u> <u>(1431) (32)</u>	<u>Other Capital</u> <u>Projects Fund (39)</u>	<u>Debt Service (40)</u>	<u>Permanent (90)</u>	<u>Total</u>
6000 Revenue from Local Sources					
6111 Current Real Estate Taxes					98,111,757.64
6112 Interim Real Estate Taxes					193,125.60
6153 Current Act 511 Real Estate Transfer Taxes					3,772,114.90
6411 Delinquent Real Estate Taxes					5,274,617.20
6500 Earnings on Investments	34,372.33	47,684.33			942,943.63
6700 Revenues from LEA Activities					29,131.00
6831 Federal Revenue Received from Other Pennsylvania Public LEAs					7,363.00
6832 Federal IDEA Revenue Received as Pass Through					1,896,039.00
6910 Rentals					29,000.00
6920 Contributions and Donations from Private Sources					1,000.00
6942 Summer School Tuition					48,445.12
6944 Receipts from Other LEAs in Pennsylvania - Education					144,262.06
6980 Revenue from Community Services Activities					1,147,535.62
6991 Refunds of a Prior Year Expenditure					47,025.13
6999 Other Revenues Not Specified Above					201,499.43
6000 Total Revenue from Local Sources	\$34,372.33	\$47,684.33			\$111,845,859.33
7000 Revenue from State Sources					
7111 Basic Education Funding-Formula					40,035,982.36
7160 Tuition for Orphans Subsidy					433,717.80
7271 Special Education funds for School-Aged Pupils					8,888,216.51
7311 Pupil Transportation Subsidy					2,325,229.00
7312 Nonpublic and Charter School Pupil Transportation Subsidy					370,755.00
7320 Rental and Sinking Fund Payments / Building Reimbursement Subsidy					1,405,871.73
7330 Health Services (Medical, Dental, Nurse, Act 25)					273,968.73
7340 State Property Tax Reduction Allocation					5,141,347.19
7361 School Safety and Security Grants					1,165,818.45
7505 Ready to Learn Block Grant					2,073,956.00
7521 Continuity of Education and Equity Grants					491,175.90
7599 Other State Revenue Not Listed Elsewhere in the 7000 Series					2,627,619.76
7810 State Share of Social Security and Medicare Taxes					3,859,511.34
7820 State Share of Retirement Contributions					19,833,669.08
7000 Total Revenue from State Sources					\$88,926,838.85
8000 Revenue from Federal Sources					
8514 NCLB, Title I - Improving the Academic Achievement of the Disadvantaged					4,995,608.15

LEA : 125239452 Upper Darby SD

Printed 12/4/2020 10:48:35 AM

	<u>General Fund (10)</u>	<u>Student Sponsored Activity Fund (21)</u>	<u>Public Purpose Trust (27)</u>	<u>Other Compt Approved (28)</u>	<u>Athletic / Activity (29)</u>	<u>Capital Reserve (690, 1850) (31)</u>
8000 Revenue from Federal Sources						
8515 NCLB, Title II - Preparing, Training and Recruiting High Quality Teachers and Principals	667,630.23					
8516 NCLB, Title III - Language Instruction for Limited English Proficient and Immigrant Students	192,512.42					
8517 NCLB, Title IV - 21St Century Schools	150,688.00					
8732 ARRA - Qualified School Construction Bonds (QSCB)	248,946.71					
8810 School-Based Access Medicaid Reimbursement Program (SBAP) Reimbursements (Access)	991,793.39					
8820 Medical Assistance Reimbursement for Administrative Claiming (Quarterly) Program	122,770.38					
8000 Total Revenue from Federal Sources	\$7,369,949.28					
9000 Other Financing Sources						
9290 Other Extended-Term Financing Proceeds	2,188,808.38					
9310 General Fund Transfers						
9350 Enterprise Fund Transfers	894,035.09					
9000 Total Other Financing Sources	\$3,082,843.47					
Total From All Sources	\$211,143,434.27					

LEA : 125239452 Upper Darby SD

Printed 12/4/2020 10:48:35 AM

	<u>Capital Reserve</u> <u>(1431) (32)</u>	<u>Other Capital</u> <u>Projects Fund (39)</u>	<u>Debt Service (40)</u>	<u>Permanent (90)</u>	<u>Total</u>
8000 Revenue from Federal Sources					
8515 NCLB, Title II - Preparing, Training and Recruiting High Quality Teachers and Principals					667,630.23
8516 NCLB, Title III - Language Instruction for Limited English Proficient and Immigrant Students					192,512.42
8517 NCLB, Title IV - 21St Century Schools					150,688.00
8732 ARRA - Qualified School Construction Bonds (QSCB)					248,946.71
8810 School-Based Access Medicaid Reimbursement Program (SBAP) Reimbursements (Access)					991,793.39
8820 Medical Assistance Reimbursement for Administrative Claiming (Quarterly) Program					122,770.38
8000 Total Revenue from Federal Sources					\$7,369,949.28
9000 Other Financing Sources					
9290 Other Extended-Term Financing Proceeds					2,188,808.38
9310 General Fund Transfers	3,150,000.00				3,150,000.00
9350 Enterprise Fund Transfers					894,035.09
9000 Total Other Financing Sources	\$3,150,000.00				\$6,232,843.47
Total From All Sources	\$3,184,372.33	\$47,684.33			\$214,375,490.93

LEA : 125239452 Upper Darby SD

Printed 12/4/2020 10:48:40 AM

	<u>General Fund (10)</u>	<u>Student Sponsored</u> <u>Activity Fund (21)</u>	<u>Public Purpose Trust (27)</u>	<u>Other Compt Approved</u> <u>(28)</u>	<u>Athletic / Activity (29)</u>	<u>Capital Reserve (690.</u> <u>1850) (31)</u>
Revenue from Local Sources	111,763,802.67					
Revenue from State Sources	88,926,838.85					
Revenue from Federal Sources	7,369,949.28					
Other Financing Sources	3,082,843.47					
Total From All Sources	\$211,143,434.27					

LEA : 125239452 Upper Darby SD

Printed 12/4/2020 10:48:40 AM

	<u>Capital Reserve (1431)</u> <u>(32)</u>	<u>Other Capital Projects</u> <u>Fund (39)</u>	<u>Debt Service (40)</u>	<u>Permanent (90)</u>	<u>Total</u>
Revenue from Local Sources	34,372.33	47,684.33			111,845,859.33
Revenue from State Sources					88,926,838.85
Revenue from Federal Sources					7,369,949.28
Other Financing Sources	3,150,000.00				6,232,843.47
Total From All Sources	\$3,184,372.33	\$47,684.33			\$214,375,490.93

LEA : 125239452 Upper Darby SD

Printed 12/4/2020 10:48:45 AM

General Fund (10)	
1000 Instruction	<u>Total</u>
100 <u>Personnel Services – Salaries</u>	
100 Personnel Services – Salaries	59,353,331.23
Total Personnel Services – Salaries	\$59,353,331.23
200 <u>Personnel Services – Employee Benefits</u>	
210 Group Insurance – Contracted Provider	14,349,129.02
220 Social Security Contributions	4,390,055.44
230 PSERS Retirement Contributions	20,246,900.37
250 Unemployment Compensation	76,226.57
260 Workers' Compensation	588,975.03
280 Other Post-Employment Benefits (OPEB)	330,000.00
Total Personnel Services – Employee Benefits	\$39,981,286.43
300 <u>Purchased Professional and Technical Services</u>	
322 Professional Educational Services – Ius	3,994,068.47
329 Professional Educational Services – Other	4,500,542.17
330 Other Professional Services	1,860,244.32
Total Purchased Professional and Technical Services	\$10,354,854.96
400 <u>Purchased Property Services</u>	
430 Repairs and Maintenance Services	126,164.59
440 Rentals	97,279.18
Total Purchased Property Services	\$223,443.77
500 <u>Other Purchased Services</u>	
520 Insurance – General	500.00
530 Communications	25,856.18
550 Printing and Binding	82,669.04
561 Tuition To Other School Districts Within the State	151,971.10
562 Tuition To Pennsylvania Charter Schools	9,619,997.92
563 Tuition To Nonpublic Schools	5,614,432.35
564 Tuition To Career and Technology Centers	1,219,487.19
566 Tuition To Institutions of Higher Education and Technical Institutes	836,215.00
567 Tuition To Approved Private Schools (APS) and PA Chartered Schools for the Deaf and Blind	1,984,756.24
568 Tuition To Private Residential Rehabilitative Institutions (PRRI) [In-State] and Detention Centers	405,341.82
580 Travel	6,998.67
594 IU Payment By Withholding for Institutionalized Children's Programs – Special Classes	8,616.76
Total Other Purchased Services	\$19,956,842.27
600 <u>Supplies</u>	
610 General Supplies	675,398.58
640 Books and Periodicals	2,764,268.75
650 Supplies & Fees – Technology Related	1,316,353.04
Total Supplies	\$4,756,020.37
700 <u>Property</u>	
762 Capitalized Equipment - Replacement	5,819.67
Total Property	\$5,819.67

LEA : 125239452 Upper Darby SD

Printed 12/4/2020 10:48:45 AM

General Fund (10)		
1000 Instruction		<u>Total</u>
800 <u>Other Objects</u>		
820	Claims and Judgments Against the LEA	1,467,452.25
890	Miscellaneous Expenditures	830.00
Total Other Objects		\$1,468,282.25
Total 1000 Instruction		\$136,099,880.95

LEA : 125239452 Upper Darby SD

Printed 12/4/2020 10:48:45 AM

General Fund (10)

1100 Regular Programs – Elementary / Secondary	Elementary	Secondary	Federal	Total
100 Personnel Services – Salaries				
100 Personnel Services – Salaries	24,120,844.66	21,024,379.88	2,611,688.99	47,756,913.53
Total Personnel Services – Salaries	\$24,120,844.66	\$21,024,379.88	\$2,611,688.99	\$47,756,913.53
200 Personnel Services – Employee Benefits				
210 Group Insurance – Contracted Provider	5,640,375.40	4,506,037.65	497,355.49	10,643,768.54
220 Social Security Contributions	1,783,223.67	1,554,742.13	194,286.69	3,532,252.49
230 PSERS Retirement Contributions	8,568,489.10	7,263,525.03	447,208.87	16,279,223.00
250 Unemployment Compensation	38,287.19	23,843.96		62,131.15
260 Workers' Compensation	237,853.61	207,055.33	24,961.00	469,869.94
280 Other Post-Employment Benefits (OPEB)	210,000.00	120,000.00		330,000.00
Total Personnel Services – Employee Benefits	\$16,478,228.97	\$13,675,204.10	\$1,163,812.05	\$31,317,245.12
300 Purchased Professional and Technical Services				
329 Professional Educational Services – Other	688,650.06	332,762.69		1,021,412.75
Total Purchased Professional and Technical Services	\$688,650.06	\$332,762.69		\$1,021,412.75
400 Purchased Property Services				
430 Repairs and Maintenance Services	52,376.40	73,788.19		126,164.59
440 Rentals	34,054.23	59,981.59		94,035.82
Total Purchased Property Services	\$86,430.63	\$133,769.78		\$220,200.41
500 Other Purchased Services				
520 Insurance – General		500.00		500.00
530 Communications	12,658.48	13,197.70		25,856.18
550 Printing and Binding	50,847.27	31,203.16		82,050.43
562 Tuition To Pennsylvania Charter Schools	3,633,598.70	2,103,985.80		5,737,584.50
580 Travel	401.17		848.40	1,249.57
Total Other Purchased Services	\$3,697,505.62	\$2,148,886.66	\$848.40	\$5,847,240.68
600 Supplies				
610 General Supplies	236,279.74	355,960.29	10,401.03	602,641.06
640 Books and Periodicals	1,517,896.78	1,184,724.17	54,116.19	2,756,737.14
650 Supplies & Fees – Technology Related	549,618.34	756,646.70	6,300.00	1,312,565.04
Total Supplies	\$2,303,794.86	\$2,297,331.16	\$70,817.22	\$4,671,943.24
700 Property				
762 Capitalized Equipment - Replacement		5,819.67		5,819.67
Total Property		\$5,819.67		\$5,819.67
Total 1100 Regular Programs – Elementary / Secondary	\$47,375,454.80	\$39,618,153.94	\$3,847,166.66	\$90,840,775.40

LEA : 125239452 Upper Darby SD

Printed 12/4/2020 10:48:45 AM

General Fund (10)

1110 Regular Programs

	Elementary	Secondary	Federal	Total
100 <u>Personnel Services – Salaries</u>				
100 Personnel Services – Salaries	24,120,844.66	21,024,379.88		45,145,224.54
Total Personnel Services – Salaries	\$24,120,844.66	\$21,024,379.88		\$45,145,224.54
200 <u>Personnel Services – Employee Benefits</u>				
210 Group Insurance – Contracted Provider	5,640,375.40	4,506,037.65		10,146,413.05
220 Social Security Contributions	1,783,223.67	1,554,742.13		3,337,965.80
230 PSERS Retirement Contributions	8,568,489.10	7,263,525.03		15,832,014.13
250 Unemployment Compensation	38,287.19	23,843.96		62,131.15
260 Workers' Compensation	237,853.61	207,055.33		444,908.94
280 Other Post-Employment Benefits (OPEB)	210,000.00	120,000.00		330,000.00
Total Personnel Services – Employee Benefits	\$16,478,228.97	\$13,675,204.10		\$30,153,433.07
300 <u>Purchased Professional and Technical Services</u>				
329 Professional Educational Services – Other	688,650.06	332,762.69		1,021,412.75
Total Purchased Professional and Technical Services	\$688,650.06	\$332,762.69		\$1,021,412.75
400 <u>Purchased Property Services</u>				
430 Repairs and Maintenance Services	52,376.40	73,788.19		126,164.59
440 Rentals	34,054.23	59,981.59		94,035.82
Total Purchased Property Services	\$86,430.63	\$133,769.78		\$220,200.41
500 <u>Other Purchased Services</u>				
520 Insurance – General		500.00		500.00
530 Communications	12,658.48	13,197.70		25,856.18
550 Printing and Binding	50,847.27	31,203.16		82,050.43
562 Tuition To Pennsylvania Charter Schools	3,633,598.70	2,103,985.80		5,737,584.50
580 Travel	401.17			401.17
Total Other Purchased Services	\$3,697,505.62	\$2,148,886.66		\$5,846,392.28
600 <u>Supplies</u>				
610 General Supplies	236,279.74	355,960.29		592,240.03
640 Books and Periodicals	1,517,896.78	1,184,724.17		2,702,620.95
650 Supplies & Fees – Technology Related	549,618.34	756,646.70		1,306,265.04
Total Supplies	\$2,303,794.86	\$2,297,331.16		\$4,601,126.02
700 <u>Property</u>				
762 Capitalized Equipment - Replacement		5,819.67		5,819.67
Total Property		\$5,819.67		\$5,819.67
Total 1110 Regular Programs	\$47,375,454.80	\$39,618,153.94		\$86,993,608.74

LEA : 125239452 Upper Darby SD

Printed 12/4/2020 10:48:45 AM

General Fund (10)

1190 Federally-Funded Regular Programs	<u>Elementary</u>	<u>Secondary</u>	<u>Federal</u>	<u>Total</u>
100 <u>Personnel Services – Salaries</u>				
100 Personnel Services – Salaries			2,611,688.99	2,611,688.99
Total Personnel Services – Salaries			\$2,611,688.99	\$2,611,688.99
200 <u>Personnel Services – Employee Benefits</u>				
210 Group Insurance – Contracted Provider			497,355.49	497,355.49
220 Social Security Contributions			194,286.69	194,286.69
230 PSERS Retirement Contributions			447,208.87	447,208.87
260 Workers' Compensation			24,961.00	24,961.00
Total Personnel Services – Employee Benefits			\$1,163,812.05	\$1,163,812.05
500 <u>Other Purchased Services</u>				
580 Travel			848.40	848.40
Total Other Purchased Services			\$848.40	\$848.40
600 <u>Supplies</u>				
610 General Supplies			10,401.03	10,401.03
640 Books and Periodicals			54,116.19	54,116.19
650 Supplies & Fees – Technology Related			6,300.00	6,300.00
Total Supplies			\$70,817.22	\$70,817.22
Total 1190 Federally-Funded Regular Programs			\$3,847,166.66	\$3,847,166.66

LEA : 125239452 Upper Darby SD

Printed 12/4/2020 10:48:45 AM

General Fund (10)				
1200 Special Programs – Elementary / Secondary	<u>Elementary</u>	<u>Secondary</u>	<u>Federal</u>	<u>Total</u>
100 <u>Personnel Services – Salaries</u>				
100 Personnel Services – Salaries	6,212,943.57	4,394,425.51	178,636.25	10,786,005.33
Total Personnel Services – Salaries	\$6,212,943.57	\$4,394,425.51	\$178,636.25	\$10,786,005.33
200 <u>Personnel Services – Employee Benefits</u>				
210 Group Insurance – Contracted Provider	1,902,770.57	1,758,665.80		3,661,436.37
220 Social Security Contributions	461,183.69	323,148.92	13,664.57	797,997.18
230 PSERS Retirement Contributions	2,142,808.20	1,519,087.07	28,189.55	3,690,084.82
250 Unemployment Compensation	13,953.19	142.23		14,095.42
260 Workers' Compensation	63,999.05	49,505.57		113,504.62
Total Personnel Services – Employee Benefits	\$4,584,714.70	\$3,650,549.59	\$41,854.12	\$8,277,118.41
300 <u>Purchased Professional and Technical Services</u>				
322 Professional Educational Services – lus	1,117,666.39	901,119.83	1,703,418.25	3,722,204.47
329 Professional Educational Services – Other	2,137,201.67	1,248,869.11	19,130.03	3,405,200.81
330 Other Professional Services	970,035.02	591,640.55	298,568.75	1,860,244.32
Total Purchased Professional and Technical Services	\$4,224,903.08	\$2,741,629.49	\$2,021,117.03	\$8,987,649.60
400 <u>Purchased Property Services</u>				
440 Rentals		1,621.68		1,621.68
Total Purchased Property Services		\$1,621.68		\$1,621.68
500 <u>Other Purchased Services</u>				
550 Printing and Binding	309.31	309.30		618.61
562 Tuition To Pennsylvania Charter Schools	2,169,616.39	1,712,797.03		3,882,413.42
563 Tuition To Nonpublic Schools	2,110,293.65	2,850,550.71	653,587.99	5,614,432.35
567 Tuition To Approved Private Schools (APS) and PA Chartered Schools for the Deaf and Blind	976,816.12	1,007,940.12		1,984,756.24
580 Travel	5,606.33	142.77		5,749.10
594 IU Payment By Withholding for Institutionalized Children's Programs – Special Classes		8,616.76		8,616.76
Total Other Purchased Services	\$5,262,641.80	\$5,580,356.69	\$653,587.99	\$11,496,586.48
600 <u>Supplies</u>				
610 General Supplies	24,136.53	44,815.78		68,952.31
640 Books and Periodicals	1,124.52	5,141.82		6,266.34
650 Supplies & Fees – Technology Related		3,788.00		3,788.00
Total Supplies	\$25,261.05	\$53,745.60		\$79,006.65
800 <u>Other Objects</u>				
820 Claims and Judgments Against the LEA	734,578.35	732,873.90		1,467,452.25
890 Miscellaneous Expenditures		830.00		830.00
Total Other Objects	\$734,578.35	\$733,703.90		\$1,468,282.25
Total 1200 Special Programs – Elementary / Secondary	\$21,045,042.55	\$17,156,032.46	\$2,895,195.39	\$41,096,270.40

LEA : 125239452 Upper Darby SD

Printed 12/4/2020 10:48:45 AM

General Fund (10)				
1210 Life Skills Support	<u>Elementary</u>	<u>Secondary</u>	<u>Federal</u>	<u>Total</u>
100 <u>Personnel Services – Salaries</u>				
100 Personnel Services – Salaries	540,838.86	432,867.90	27,743.75	1,001,450.51
Total Personnel Services – Salaries	\$540,838.86	\$432,867.90	\$27,743.75	\$1,001,450.51
200 <u>Personnel Services – Employee Benefits</u>				
210 Group Insurance – Contracted Provider	182,376.56	131,345.32		313,721.88
220 Social Security Contributions	40,265.32	32,051.48	2,122.40	74,439.20
230 PSERS Retirement Contributions	187,684.17	149,959.97	3,597.63	341,241.77
260 Workers' Compensation	5,631.33	3,536.81		9,168.14
Total Personnel Services – Employee Benefits	\$415,957.38	\$316,893.58	\$5,720.03	\$738,570.99
300 <u>Purchased Professional and Technical Services</u>				
322 Professional Educational Services – Ius		3,883.25	4,100.00	7,983.25
329 Professional Educational Services – Other	202,452.38	157,827.41	1,003.63	361,283.42
330 Other Professional Services	5,784.19	15,942.63		21,726.82
Total Purchased Professional and Technical Services	\$208,236.57	\$177,653.29	\$5,103.63	\$390,993.49
500 <u>Other Purchased Services</u>				
563 Tuition To Nonpublic Schools	9,407.60	97,209.59	23,370.26	129,987.45
Total Other Purchased Services	\$9,407.60	\$97,209.59	\$23,370.26	\$129,987.45
600 <u>Supplies</u>				
610 General Supplies		3,076.63		3,076.63
Total Supplies		\$3,076.63		\$3,076.63
800 <u>Other Objects</u>				
820 Claims and Judgments Against the LEA		22,523.98		22,523.98
Total Other Objects		\$22,523.98		\$22,523.98
Total 1210 Life Skills Support	\$1,174,440.41	\$1,050,224.97	\$61,937.67	\$2,286,603.05

LEA : 125239452 Upper Darby SD

Printed 12/4/2020 10:48:45 AM

General Fund (10)				
1220 Sensory Support	<u>Elementary</u>	<u>Secondary</u>	<u>Federal</u>	<u>Total</u>
100 <u>Personnel Services – Salaries</u>				
100 Personnel Services – Salaries	768,407.75	101,418.39	14,150.00	883,976.14
Total Personnel Services – Salaries	\$768,407.75	\$101,418.39	\$14,150.00	\$883,976.14
200 <u>Personnel Services – Employee Benefits</u>				
210 Group Insurance – Contracted Provider	163,984.42	93,450.82		257,435.24
220 Social Security Contributions	57,406.96	7,488.72	1,081.95	65,977.63
230 PSERS Retirement Contributions	264,850.00	35,839.36	2,426.02	303,115.38
260 Workers' Compensation	7,767.79	1,874.96		9,642.75
Total Personnel Services – Employee Benefits	\$494,009.17	\$138,653.86	\$3,507.97	\$636,171.00
300 <u>Purchased Professional and Technical Services</u>				
322 Professional Educational Services – Ius			2,202.60	2,202.60
329 Professional Educational Services – Other	15,611.46	85,949.10		101,560.56
330 Other Professional Services	2,059.85	3,133.75		5,193.60
Total Purchased Professional and Technical Services	\$17,671.31	\$89,082.85	\$2,202.60	\$108,956.76
500 <u>Other Purchased Services</u>				
563 Tuition To Nonpublic Schools	69,580.40	38,822.23	33,640.00	142,042.63
Total Other Purchased Services	\$69,580.40	\$38,822.23	\$33,640.00	\$142,042.63
Total 1220 Sensory Support	\$1,349,668.63	\$367,977.33	\$53,500.57	\$1,771,146.53

LEA : 125239452 Upper Darby SD

Printed 12/4/2020 10:48:45 AM

General Fund (10)

1230 Emotional Support

	<u>Elementary</u>	<u>Secondary</u>	<u>Federal</u>	<u>Total</u>
100 <u>Personnel Services – Salaries</u>				
100 Personnel Services – Salaries	1,164,941.38	684,069.04	52,322.50	1,901,332.92
Total Personnel Services – Salaries	\$1,164,941.38	\$684,069.04	\$52,322.50	\$1,901,332.92
200 <u>Personnel Services – Employee Benefits</u>				
210 Group Insurance – Contracted Provider	510,649.65	452,342.58		962,992.23
220 Social Security Contributions	85,792.25	50,437.71	4,002.67	140,232.63
230 PSERS Retirement Contributions	402,064.46	240,219.20	8,257.85	650,541.51
260 Workers' Compensation	13,031.75	7,330.56		20,362.31
Total Personnel Services – Employee Benefits	\$1,011,538.11	\$750,330.05	\$12,260.52	\$1,774,128.68
300 <u>Purchased Professional and Technical Services</u>				
322 Professional Educational Services – Ius	169,580.75	236,209.42	65,600.00	471,390.17
329 Professional Educational Services – Other	722,139.08	507,234.06	14,337.58	1,243,710.72
330 Other Professional Services	494,683.37	465,302.09	568.75	960,554.21
Total Purchased Professional and Technical Services	\$1,386,403.20	\$1,208,745.57	\$80,506.33	\$2,675,655.10
500 <u>Other Purchased Services</u>				
563 Tuition To Nonpublic Schools	1,636,179.35	2,192,831.83	229,572.01	4,058,583.19
Total Other Purchased Services	\$1,636,179.35	\$2,192,831.83	\$229,572.01	\$4,058,583.19
600 <u>Supplies</u>				
610 General Supplies	212.55			212.55
640 Books and Periodicals	491.88			491.88
Total Supplies	\$704.43			\$704.43
800 <u>Other Objects</u>				
820 Claims and Judgments Against the LEA	277,413.24	162,942.86		440,356.10
Total Other Objects	\$277,413.24	\$162,942.86		\$440,356.10
Total 1230 Emotional Support	\$5,477,179.71	\$4,998,919.35	\$374,661.36	\$10,850,760.42

LEA : 125239452 Upper Darby SD

Printed 12/4/2020 10:48:45 AM

General Fund (10)

1240 Academic Support

	Elementary	Secondary	Federal	Total
100 Personnel Services – Salaries				
100 Personnel Services – Salaries	2,924,512.12	2,990,918.49	45,375.00	5,960,805.61
Total Personnel Services – Salaries	\$2,924,512.12	\$2,990,918.49	\$45,375.00	\$5,960,805.61
200 Personnel Services – Employee Benefits				
210 Group Insurance – Contracted Provider	892,448.40	1,044,921.93		1,937,370.33
220 Social Security Contributions	216,286.73	219,544.45	3,471.20	439,302.38
230 PSERS Retirement Contributions	1,004,558.08	1,027,903.96	7,573.77	2,040,035.81
260 Workers' Compensation	29,201.07	34,785.00		63,986.07
Total Personnel Services – Employee Benefits	\$2,142,494.28	\$2,327,155.34	\$11,044.97	\$4,480,694.59
300 Purchased Professional and Technical Services				
322 Professional Educational Services – Ius		92,406.72	5,568.40	97,975.12
329 Professional Educational Services – Other	613,396.83	247,785.48		861,182.31
330 Other Professional Services	3,524.05	44,072.90		47,596.95
Total Purchased Professional and Technical Services	\$616,920.88	\$384,265.10	\$5,568.40	\$1,006,754.38
500 Other Purchased Services				
563 Tuition To Nonpublic Schools	203,930.70	330,345.68	222,875.40	757,151.78
Total Other Purchased Services	\$203,930.70	\$330,345.68	\$222,875.40	\$757,151.78
600 Supplies				
610 General Supplies	1,976.25			1,976.25
640 Books and Periodicals	323.64			323.64
Total Supplies	\$2,299.89			\$2,299.89
800 Other Objects				
820 Claims and Judgments Against the LEA	119,022.19	295,841.95		414,864.14
890 Miscellaneous Expenditures		830.00		830.00
Total Other Objects	\$119,022.19	\$296,671.95		\$415,694.14
Total 1240 Academic Support	\$6,009,180.06	\$6,329,356.56	\$284,863.77	\$12,623,400.39

LEA : 125239452 Upper Darby SD

Printed 12/4/2020 10:48:45 AM

General Fund (10)				
1241 Learning Support – Public	<u>Elementary</u>	<u>Secondary</u>	<u>Federal</u>	<u>Total</u>
100 <u>Personnel Services – Salaries</u>				
100 Personnel Services – Salaries	2,786,473.57	2,788,151.24	45,375.00	5,619,999.81
Total Personnel Services – Salaries	\$2,786,473.57	\$2,788,151.24	\$45,375.00	\$5,619,999.81
200 <u>Personnel Services – Employee Benefits</u>				
210 Group Insurance – Contracted Provider	876,340.60	1,002,460.13		1,878,800.73
220 Social Security Contributions	206,051.19	204,508.10	3,471.20	414,030.49
230 PSERS Retirement Contributions	957,224.74	958,375.05	7,573.77	1,923,173.56
260 Workers' Compensation	28,402.63	32,938.63		61,341.26
Total Personnel Services – Employee Benefits	\$2,068,019.16	\$2,198,281.91	\$11,044.97	\$4,277,346.04
300 <u>Purchased Professional and Technical Services</u>				
322 Professional Educational Services – Ius		92,406.72	5,568.40	97,975.12
329 Professional Educational Services – Other	613,396.83	247,785.48		861,182.31
330 Other Professional Services	3,524.05	44,072.90		47,596.95
Total Purchased Professional and Technical Services	\$616,920.88	\$384,265.10	\$5,568.40	\$1,006,754.38
500 <u>Other Purchased Services</u>				
563 Tuition To Nonpublic Schools	203,930.70	330,345.68	222,875.40	757,151.78
Total Other Purchased Services	\$203,930.70	\$330,345.68	\$222,875.40	\$757,151.78
600 <u>Supplies</u>				
610 General Supplies	927.55			927.55
640 Books and Periodicals	323.64			323.64
Total Supplies	\$1,251.19			\$1,251.19
800 <u>Other Objects</u>				
820 Claims and Judgments Against the LEA	119,022.19	295,841.95		414,864.14
Total Other Objects	\$119,022.19	\$295,841.95		\$414,864.14
Total 1241 Learning Support – Public	\$5,795,617.69	\$5,996,885.88	\$284,863.77	\$12,077,367.34

LEA : 125239452 Upper Darby SD

Printed 12/4/2020 10:48:45 AM

General Fund (10)

1243 Gifted Support

	<u>Elementary</u>	<u>Secondary</u>	<u>Federal</u>	<u>Total</u>
100 <u>Personnel Services – Salaries</u>				
100 Personnel Services – Salaries	138,038.55	202,767.25		340,805.80
Total Personnel Services – Salaries	\$138,038.55	\$202,767.25		\$340,805.80
200 <u>Personnel Services – Employee Benefits</u>				
210 Group Insurance – Contracted Provider	16,107.80	42,461.80		58,569.60
220 Social Security Contributions	10,235.54	15,036.35		25,271.89
230 PSERS Retirement Contributions	47,333.34	69,528.91		116,862.25
260 Workers' Compensation	798.44	1,846.37		2,644.81
Total Personnel Services – Employee Benefits	\$74,475.12	\$128,873.43		\$203,348.55
600 <u>Supplies</u>				
610 General Supplies	1,048.70			1,048.70
Total Supplies	\$1,048.70			\$1,048.70
800 <u>Other Objects</u>				
890 Miscellaneous Expenditures		830.00		830.00
Total Other Objects		\$830.00		\$830.00
Total 1243 Gifted Support	\$213,562.37	\$332,470.68		\$546,033.05

LEA : 125239452 Upper Darby SD

Printed 12/4/2020 10:48:45 AM

General Fund (10)

1260 Physical Support	<u>Elementary</u>	<u>Secondary</u>	<u>Federal</u>	<u>Total</u>
100 <u>Personnel Services – Salaries</u>				
100 Personnel Services – Salaries	537,574.00		11,400.00	548,974.00
Total Personnel Services – Salaries	\$537,574.00		\$11,400.00	\$548,974.00
200 <u>Personnel Services – Employee Benefits</u>				
210 Group Insurance – Contracted Provider	14,643.23			14,643.23
220 Social Security Contributions	40,936.73		872.10	41,808.83
230 PSERS Retirement Contributions	186,014.37	274.32	1,954.53	188,243.22
260 Workers' Compensation	4,579.20	82.83		4,662.03
Total Personnel Services – Employee Benefits	\$246,173.53	\$357.15	\$2,826.63	\$249,357.31
Total 1260 Physical Support	\$783,747.53	\$357.15	\$14,226.63	\$798,331.31

LEA : 125239452 Upper Darby SD

Printed 12/4/2020 10:48:45 AM

General Fund (10)				
1270 Multi-Handicapped Support	Elementary	Secondary	Federal	Total
100 Personnel Services – Salaries				
100 Personnel Services – Salaries	77,681.10		2,940.00	80,621.10
Total Personnel Services – Salaries	\$77,681.10		\$2,940.00	\$80,621.10
200 Personnel Services – Employee Benefits				
210 Group Insurance – Contracted Provider	87,421.22			87,421.22
220 Social Security Contributions	5,816.34		224.91	6,041.25
230 PSERS Retirement Contributions	26,584.88		144.02	26,728.90
260 Workers' Compensation	1,078.78			1,078.78
Total Personnel Services – Employee Benefits	\$120,901.22		\$368.93	\$121,270.15
300 Purchased Professional and Technical Services				
322 Professional Educational Services – Ius			155.25	155.25
329 Professional Educational Services – Other	45,338.39	15,456.47	1,880.53	62,675.39
330 Other Professional Services	305,175.65	47,405.14		352,580.79
Total Purchased Professional and Technical Services	\$350,514.04	\$62,861.61	\$2,035.78	\$415,411.43
500 Other Purchased Services				
563 Tuition To Nonpublic Schools	22,734.00	5,684.25		28,418.25
Total Other Purchased Services	\$22,734.00	\$5,684.25		\$28,418.25
600 Supplies				
610 General Supplies	212.75			212.75
Total Supplies	\$212.75			\$212.75
Total 1270 Multi-Handicapped Support	\$572,043.11	\$68,545.86	\$5,344.71	\$645,933.68

LEA : 125239452 Upper Darby SD

Printed 12/4/2020 10:48:45 AM

General Fund (10)				
1280 Early Intervention Support	<u>Elementary</u>	<u>Secondary</u>	<u>Federal</u>	<u>Total</u>
100 <u>Personnel Services – Salaries</u>				
100 Personnel Services – Salaries	28,702.50			28,702.50
Total Personnel Services – Salaries	\$28,702.50			\$28,702.50
200 <u>Personnel Services – Employee Benefits</u>				
220 Social Security Contributions	2,172.18			2,172.18
230 PSERS Retirement Contributions	9,842.08			9,842.08
Total Personnel Services – Employee Benefits	\$12,014.26			\$12,014.26
300 <u>Purchased Professional and Technical Services</u>				
322 Professional Educational Services – Ius	379,465.19		7,363.00	386,828.19
Total Purchased Professional and Technical Services	\$379,465.19		\$7,363.00	\$386,828.19
Total 1280 Early Intervention Support	\$420,181.95		\$7,363.00	\$427,544.95

LEA : 125239452 Upper Darby SD

Printed 12/4/2020 10:48:45 AM

General Fund (10)				
1290 Special Programs - Other Support	<u>Elementary</u>	<u>Secondary</u>	<u>Federal</u>	<u>Total</u>
100 <u>Personnel Services – Salaries</u>				
100 Personnel Services – Salaries	170,285.86	185,151.69	24,705.00	380,142.55
Total Personnel Services – Salaries	\$170,285.86	\$185,151.69	\$24,705.00	\$380,142.55
200 <u>Personnel Services – Employee Benefits</u>				
210 Group Insurance – Contracted Provider	51,247.09	36,605.15		87,852.24
220 Social Security Contributions	12,507.18	13,626.56	1,889.34	28,023.08
230 PSERS Retirement Contributions	61,210.16	64,890.26	4,235.73	130,336.15
250 Unemployment Compensation	13,953.19	142.23		14,095.42
260 Workers' Compensation	2,709.13	1,895.41		4,604.54
Total Personnel Services – Employee Benefits	\$141,626.75	\$117,159.61	\$6,125.07	\$264,911.43
300 <u>Purchased Professional and Technical Services</u>				
322 Professional Educational Services – lus	568,620.45	568,620.44	1,618,429.00	2,755,669.89
329 Professional Educational Services – Other	538,263.53	234,616.59	1,908.29	774,788.41
330 Other Professional Services	158,807.91	15,784.04	298,000.00	472,591.95
Total Purchased Professional and Technical Services	\$1,265,691.89	\$819,021.07	\$1,918,337.29	\$4,003,050.25
400 <u>Purchased Property Services</u>				
440 Rentals		1,621.68		1,621.68
Total Purchased Property Services		\$1,621.68		\$1,621.68
500 <u>Other Purchased Services</u>				
550 Printing and Binding	309.31	309.30		618.61
562 Tuition To Pennsylvania Charter Schools	2,169,616.39	1,712,797.03		3,882,413.42
563 Tuition To Nonpublic Schools	168,461.60	185,657.13	144,130.32	498,249.05
567 Tuition To Approved Private Schools (APS) and PA Chartered Schools for the Deaf and Blind	976,816.12	1,007,940.12		1,984,756.24
580 Travel	5,606.33	142.77		5,749.10
594 IU Payment By Withholding for Institutionalized Children's Programs – Special Classes		8,616.76		8,616.76
Total Other Purchased Services	\$3,320,809.75	\$2,915,463.11	\$144,130.32	\$6,380,403.18
600 <u>Supplies</u>				
610 General Supplies	21,734.98	41,739.15		63,474.13
640 Books and Periodicals	309.00	5,141.82		5,450.82
650 Supplies & Fees – Technology Related		3,788.00		3,788.00
Total Supplies	\$22,043.98	\$50,668.97		\$72,712.95
800 <u>Other Objects</u>				
820 Claims and Judgments Against the LEA	338,142.92	251,565.11		589,708.03
Total Other Objects	\$338,142.92	\$251,565.11		\$589,708.03
Total 1290 Special Programs - Other Support	\$5,258,601.15	\$4,340,651.24	\$2,093,297.68	\$11,692,550.07

LEA : 125239452 Upper Darby SD

Printed 12/4/2020 10:48:45 AM

General Fund (10)

1300 Vocational Education

500 Other Purchased Services

	<u>Elementary</u>	<u>Secondary</u>	<u>Federal</u>	<u>Total</u>
564 Tuition To Career and Technology Centers		1,219,487.19		1,219,487.19
Total Other Purchased Services		\$1,219,487.19		\$1,219,487.19
Total 1300 Vocational Education		\$1,219,487.19		\$1,219,487.19

LEA : 125239452 Upper Darby SD

Printed 12/4/2020 10:48:45 AM

General Fund (10)				
1400 Other Instructional Programs – Elementary / Secondary	<u>Elementary</u>	<u>Secondary</u>	<u>Federal</u>	<u>Total</u>
100 <u>Personnel Services – Salaries</u>				
100 Personnel Services – Salaries	66,312.92	626,516.95	117,582.50	810,412.37
Total Personnel Services – Salaries	\$66,312.92	\$626,516.95	\$117,582.50	\$810,412.37
200 <u>Personnel Services – Employee Benefits</u>				
210 Group Insurance – Contracted Provider		43,924.11		43,924.11
220 Social Security Contributions	5,073.27	45,900.24	8,832.26	59,805.77
230 PSERS Retirement Contributions	39,283.81	218,310.12	19,998.62	277,592.55
260 Workers' Compensation	1,593.31	2,784.16	1,223.00	5,600.47
Total Personnel Services – Employee Benefits	\$45,950.39	\$310,918.63	\$30,053.88	\$386,922.90
300 <u>Purchased Professional and Technical Services</u>				
329 Professional Educational Services – Other	13,969.62	39,958.99		53,928.61
Total Purchased Professional and Technical Services	\$13,969.62	\$39,958.99		\$53,928.61
400 <u>Purchased Property Services</u>				
440 Rentals		1,621.68		1,621.68
Total Purchased Property Services		\$1,621.68		\$1,621.68
500 <u>Other Purchased Services</u>				
561 Tuition To Other School Districts Within the State		151,971.10		151,971.10
568 Tuition To Private Residential Rehabilitative Institutions (PRRI) [In-State] and Detention Centers	69,863.04	335,478.78		405,341.82
Total Other Purchased Services	\$69,863.04	\$487,449.88		\$557,312.92
600 <u>Supplies</u>				
610 General Supplies	1,157.37	366.42	2,281.42	3,805.21
640 Books and Periodicals			1,265.27	1,265.27
Total Supplies	\$1,157.37	\$366.42	\$3,546.69	\$5,070.48
Total 1400 Other Instructional Programs – Elementary / Secondary	\$197,253.34	\$1,466,832.55	\$151,183.07	\$1,815,268.96

LEA : 125239452 Upper Darby SD

Printed 12/4/2020 10:48:45 AM

General Fund (10)

1420 Summer School	<u>Elementary</u>	<u>Secondary</u>	<u>Federal</u>	<u>Total</u>
100 <u>Personnel Services – Salaries</u>				
100 Personnel Services – Salaries	66,312.92	35,723.33	42,477.50	144,513.75
Total Personnel Services – Salaries	\$66,312.92	\$35,723.33	\$42,477.50	\$144,513.75
200 <u>Personnel Services – Employee Benefits</u>				
220 Social Security Contributions	5,073.27	2,730.86	3,249.86	11,053.99
230 PSERS Retirement Contributions	27,875.09	14,247.01	7,133.65	49,255.75
260 Workers’ Compensation	1,037.85	611.02		1,648.87
Total Personnel Services – Employee Benefits	\$33,986.21	\$17,588.89	\$10,383.51	\$61,958.61
600 <u>Supplies</u>				
610 General Supplies	1,157.37	366.42	2,281.42	3,805.21
640 Books and Periodicals			1,265.27	1,265.27
Total Supplies	\$1,157.37	\$366.42	\$3,546.69	\$5,070.48
Total 1420 Summer School	\$101,456.50	\$53,678.64	\$56,407.70	\$211,542.84

LEA : 125239452 Upper Darby SD

Printed 12/4/2020 10:48:45 AM

General Fund (10)				
1430 Homebound Instruction	<u>Elementary</u>	<u>Secondary</u>	<u>Federal</u>	<u>Total</u>
100 <u>Personnel Services – Salaries</u>				
100 Personnel Services – Salaries		3,132.50		3,132.50
Total Personnel Services – Salaries		\$3,132.50		\$3,132.50
200 <u>Personnel Services – Employee Benefits</u>				
220 Social Security Contributions		226.29		226.29
230 PSERS Retirement Contributions		1,074.15		1,074.15
260 Workers’ Compensation	102.32	102.32		204.64
Total Personnel Services – Employee Benefits	\$102.32	\$1,402.76		\$1,505.08
300 <u>Purchased Professional and Technical Services</u>				
329 Professional Educational Services – Other	13,969.62	39,958.99		53,928.61
Total Purchased Professional and Technical Services	\$13,969.62	\$39,958.99		\$53,928.61
Total 1430 Homebound Instruction	\$14,071.94	\$44,494.25		\$58,566.19

LEA : 125239452 Upper Darby SD

Printed 12/4/2020 10:48:45 AM

General Fund (10)				
1440 Alternative Regular Education Programs	<u>Elementary</u>	<u>Secondary</u>	<u>Federal</u>	<u>Total</u>
100 <u>Personnel Services – Salaries</u>				
100 Personnel Services – Salaries		587,661.12		587,661.12
Total Personnel Services – Salaries		\$587,661.12		\$587,661.12
200 <u>Personnel Services – Employee Benefits</u>				
210 Group Insurance – Contracted Provider		43,924.11		43,924.11
220 Social Security Contributions		42,943.09		42,943.09
230 PSERS Retirement Contributions		201,532.75		201,532.75
260 Workers' Compensation		1,901.26		1,901.26
Total Personnel Services – Employee Benefits		\$290,301.21		\$290,301.21
400 <u>Purchased Property Services</u>				
440 Rentals		1,621.68		1,621.68
Total Purchased Property Services		\$1,621.68		\$1,621.68
500 <u>Other Purchased Services</u>				
561 Tuition To Other School Districts Within the State		151,971.10		151,971.10
568 Tuition To Private Residential Rehabilitative Institutions (PRRI) [In-State] and Detention Centers	69,863.04	335,478.78		405,341.82
Total Other Purchased Services	\$69,863.04	\$487,449.88		\$557,312.92
Total 1440 Alternative Regular Education Programs	\$69,863.04	\$1,367,033.89		\$1,436,896.93

LEA : 125239452 Upper Darby SD

Printed 12/4/2020 10:48:45 AM

General Fund (10)

1441 Adjudicated / Court-Placed Programs	<u>Elementary</u>	<u>Secondary</u>	<u>Federal</u>	<u>Total</u>
500 <u>Other Purchased Services</u>				
561 Tuition To Other School Districts Within the State		151,971.10		151,971.10
568 Tuition To Private Residential Rehabilitative Institutions (PRRI) [In-State] and Detention Centers	69,863.04	335,478.78		405,341.82
Total Other Purchased Services	\$69,863.04	\$487,449.88		\$557,312.92
Total 1441 Adjudicated / Court-Placed Programs	\$69,863.04	\$487,449.88		\$557,312.92

LEA : 125239452 Upper Darby SD

Printed 12/4/2020 10:48:45 AM

General Fund (10)

1442 Alternative Education Programs	<u>Elementary</u>	<u>Secondary</u>	<u>Federal</u>	<u>Total</u>
100 <u>Personnel Services – Salaries</u>				
100 Personnel Services – Salaries		587,661.12		587,661.12
Total Personnel Services – Salaries		\$587,661.12		\$587,661.12
200 <u>Personnel Services – Employee Benefits</u>				
210 Group Insurance – Contracted Provider		43,924.11		43,924.11
220 Social Security Contributions		42,943.09		42,943.09
230 PSERS Retirement Contributions		201,532.75		201,532.75
260 Workers' Compensation		1,901.26		1,901.26
Total Personnel Services – Employee Benefits		\$290,301.21		\$290,301.21
400 <u>Purchased Property Services</u>				
440 Rentals		1,621.68		1,621.68
Total Purchased Property Services		\$1,621.68		\$1,621.68
Total 1442 Alternative Education Programs		\$879,584.01		\$879,584.01

LEA : 125239452 Upper Darby SD

Printed 12/4/2020 10:48:45 AM

General Fund (10)

1450 Instructional Programs Outside the Established School Day	<u>Elementary</u>	<u>Secondary</u>	<u>Federal</u>	<u>Total</u>
100 <u>Personnel Services – Salaries</u>				
100 Personnel Services – Salaries			75,105.00	75,105.00
Total Personnel Services – Salaries			\$75,105.00	\$75,105.00
200 <u>Personnel Services – Employee Benefits</u>				
220 Social Security Contributions			5,582.40	5,582.40
230 PSERS Retirement Contributions	11,408.72	1,456.21	12,864.97	25,729.90
260 Workers’ Compensation	453.14	169.56	1,223.00	1,845.70
Total Personnel Services – Employee Benefits	\$11,861.86	\$1,625.77	\$19,670.37	\$33,158.00
Total 1450 Instructional Programs Outside the Established School Day	\$11,861.86	\$1,625.77	\$94,775.37	\$108,263.00

LEA : 125239452 Upper Darby SD

Printed 12/4/2020 10:48:45 AM

General Fund (10)

1500 Nonpublic School Programs

	<u>Elementary</u>	<u>Secondary</u>	<u>Federal</u>	<u>Total</u>
300 <u>Purchased Professional and Technical Services</u>				
322 Professional Educational Services – lus			271,864.00	271,864.00
Total Purchased Professional and Technical Services			\$271,864.00	\$271,864.00
Total 1500 Nonpublic School Programs			\$271,864.00	\$271,864.00

LEA : 125239452 Upper Darby SD

Printed 12/4/2020 10:48:45 AM

General Fund (10)

1600 Adult Education Programs	<u>Elementary</u>	<u>Secondary</u>	<u>Federal</u>	<u>Total</u>
300 <u>Purchased Professional and Technical Services</u>				
329 Professional Educational Services – Other			20,000.00	20,000.00
Total Purchased Professional and Technical Services			\$20,000.00	\$20,000.00
500 <u>Other Purchased Services</u>				
566 Tuition To Institutions of Higher Education and Technical Institutes				836,215.00
Total Other Purchased Services				\$836,215.00
Total 1600 Adult Education Programs			\$20,000.00	\$856,215.00

LEA : 125239452 Upper Darby SD

Printed 12/4/2020 10:48:57 AM

General Fund (10)

2000 Support Services

Total

100 Personnel Services – Salaries	
100 Personnel Services – Salaries	25,939,299.45
Total Personnel Services – Salaries	\$25,939,299.45
200 Personnel Services – Employee Benefits	
210 Group Insurance – Contracted Provider	5,228,360.33
220 Social Security Contributions	1,925,597.43
230 PSERS Retirement Contributions	8,778,662.11
240 Tuition Reimbursement	646,079.00
250 Unemployment Compensation	146,905.34
260 Workers' Compensation	259,655.18
280 Other Post-Employment Benefits (OPEB)	175,460.04
291 Other Retirement Plans	70,281.17
Total Personnel Services – Employee Benefits	\$17,231,000.60
300 Purchased Professional and Technical Services	
322 Professional Educational Services – Ius	450.00
329 Professional Educational Services – Other	202,025.91
330 Other Professional Services	723,813.34
340 Technical Services	72,249.59
360 Employee Training and Development Services	540,428.61
390 Other Purchased Professional and Technical Services	98,987.79
Total Purchased Professional and Technical Services	\$1,637,955.24
400 Purchased Property Services	
410 Cleaning Services	2,127,176.95
420 Utility Services	285,332.55
430 Repairs and Maintenance Services	1,117,936.74
440 Rentals	595,271.35
450 Construction Services	238.71
Total Purchased Property Services	\$4,125,956.30
500 Other Purchased Services	
513 Contracted Carriers	37,926.01
515 Public Carriers	6,452.00
516 Student Transportation Services From the IU	176,143.63
520 Insurance – General	705,029.00
522 Automotive Liability Insurance	241,397.00
529 Other Insurance	8,464.00
530 Communications	176,393.04
549 Other Advertising/Public Relations	17,467.15
550 Printing and Binding	331.62
580 Travel	23,633.51
591 Services Purchased Locally	2,006.30
595 IU Payments By Withholding	87,105.00
Total Other Purchased Services	\$1,482,348.26
600 Supplies	
610 General Supplies	861,309.19

LEA : 125239452 Upper Darby SD

Printed 12/4/2020 10:48:57 AM

General Fund (10)	
2000 Support Services	
600 <u>Supplies</u>	<u>Total</u>
620 Energy	1,553,912.44
630 Food	7,782.13
640 Books and Periodicals	27,637.84
650 Supplies & Fees – Technology Related	2,158,933.15
Total Supplies	\$4,609,574.75
700 <u>Property</u>	
752 Capital Equipment – Original and Additional	1,195,821.11
762 Capitalized Equipment - Replacement	624,603.99
Total Property	\$1,820,425.10
800 <u>Other Objects</u>	
810 Dues and Fees	215,391.65
Total Other Objects	\$215,391.65
Total 2000 Support Services	\$57,061,951.35

LEA : 125239452 Upper Darby SD

Printed 12/4/2020 10:48:57 AM

General Fund (10)

2100 Support Services – Students	Elementary	Secondary	Federal	Total
100 <u>Personnel Services – Salaries</u>				
100 Personnel Services – Salaries	800,557.53	1,747,742.88	312,693.00	4,439,835.04
Total Personnel Services – Salaries	\$800,557.53	\$1,747,742.88	\$312,693.00	\$4,439,835.04
200 <u>Personnel Services – Employee Benefits</u>				
210 Group Insurance – Contracted Provider	165,025.12	442,865.21	93,566.51	1,141,580.09
220 Social Security Contributions	58,834.16	129,748.17	23,207.37	329,414.70
230 PSERS Retirement Contributions	327,086.28	593,265.36	53,609.92	1,514,745.28
250 Unemployment Compensation		631.18		1,143.51
260 Workers' Compensation	8,653.29	18,056.00	3,121.32	46,614.53
Total Personnel Services – Employee Benefits	\$559,598.85	\$1,184,565.92	\$173,505.12	\$3,033,498.11
300 <u>Purchased Professional and Technical Services</u>				
329 Professional Educational Services – Other	36,690.70	4,784.75		45,913.57
330 Other Professional Services	15,733.68			58,475.68
340 Technical Services	9,338.32	24,187.67		33,525.99
390 Other Purchased Professional and Technical Services	2,994.56	15,794.16	73,369.10	92,157.82
Total Purchased Professional and Technical Services	\$64,757.26	\$44,766.58	\$73,369.10	\$230,073.06
400 <u>Purchased Property Services</u>				
440 Rentals				4,865.28
Total Purchased Property Services				\$4,865.28
500 <u>Other Purchased Services</u>				
530 Communications				637.75
550 Printing and Binding	7.19	7.19		257.38
580 Travel	20.53	1,184.09		3,896.38
Total Other Purchased Services	\$27.72	\$1,191.28		\$4,791.51
600 <u>Supplies</u>				
610 General Supplies	2,402.80	31,668.94	1,696.27	36,899.85
650 Supplies & Fees – Technology Related	3,850.00	1,050.00	19,382.00	24,282.00
Total Supplies	\$6,252.80	\$32,718.94	\$21,078.27	\$61,181.85
800 <u>Other Objects</u>				
810 Dues and Fees	255.00	255.00		510.00
Total Other Objects	\$255.00	\$255.00		\$510.00
Total 2100 Support Services – Students	\$1,431,449.16	\$3,011,240.60	\$580,645.49	\$7,774,754.85

LEA : 125239452 Upper Darby SD

Printed 12/4/2020 10:48:57 AM

General Fund (10)				
2110 Supervision of Student Services	<u>Elementary</u>	<u>Secondary</u>	<u>Federal</u>	<u>Total</u>
100 <u>Personnel Services – Salaries</u>				
100 Personnel Services – Salaries	114,600.45	114,600.18		229,200.63
Total Personnel Services – Salaries	\$114,600.45	\$114,600.18		\$229,200.63
200 <u>Personnel Services – Employee Benefits</u>				
210 Group Insurance – Contracted Provider	23,983.81	23,983.81		47,967.62
220 Social Security Contributions	6,504.74	6,503.92		13,008.66
230 PSERS Retirement Contributions	30,961.37	30,960.84		61,922.21
260 Workers' Compensation	1,143.09	1,101.19		2,244.28
Total Personnel Services – Employee Benefits	\$62,593.01	\$62,549.76		\$125,142.77
500 <u>Other Purchased Services</u>				
550 Printing and Binding	7.19	7.19		14.38
580 Travel		252.65		252.65
Total Other Purchased Services	\$7.19	\$259.84		\$267.03
600 <u>Supplies</u>				
610 General Supplies	2,402.80	2,485.45		4,888.25
Total Supplies	\$2,402.80	\$2,485.45		\$4,888.25
800 <u>Other Objects</u>				
810 Dues and Fees	255.00	255.00		510.00
Total Other Objects	\$255.00	\$255.00		\$510.00
Total 2110 Supervision of Student Services	\$179,858.45	\$180,150.23		\$360,008.68

LEA : 125239452 Upper Darby SD

Printed 12/4/2020 10:48:57 AM

General Fund (10)

2111 Supervision of Student Services – Head of Component	<u>Elementary</u>	<u>Secondary</u>	<u>Federal</u>	<u>Total</u>
100 <u>Personnel Services – Salaries</u>				
100 Personnel Services – Salaries	91,413.45	91,413.18		182,826.63
Total Personnel Services – Salaries	\$91,413.45	\$91,413.18		\$182,826.63
200 <u>Personnel Services – Employee Benefits</u>				
210 Group Insurance – Contracted Provider	16,704.45	16,704.45		33,408.90
220 Social Security Contributions	6,504.74	6,503.92		13,008.66
230 PSERS Retirement Contributions	30,961.37	30,960.84		61,922.21
260 Workers' Compensation	917.98	876.08		1,794.06
Total Personnel Services – Employee Benefits	\$55,088.54	\$55,045.29		\$110,133.83
800 <u>Other Objects</u>				
810 Dues and Fees	255.00	255.00		510.00
Total Other Objects	\$255.00	\$255.00		\$510.00
Total 2111 Supervision of Student Services – Head of Component	\$146,756.99	\$146,713.47		\$293,470.46

LEA : 125239452 Upper Darby SD

Printed 12/4/2020 10:48:57 AM

General Fund (10)				
2119 Supervision of Student Services – All Other Supervision	<u>Elementary</u>	<u>Secondary</u>	<u>Federal</u>	<u>Total</u>
100 <u>Personnel Services – Salaries</u>				
100 Personnel Services – Salaries	23,187.00	23,187.00		46,374.00
Total Personnel Services – Salaries	\$23,187.00	\$23,187.00		\$46,374.00
200 <u>Personnel Services – Employee Benefits</u>				
210 Group Insurance – Contracted Provider	7,279.36	7,279.36		14,558.72
260 Workers’ Compensation	225.11	225.11		450.22
Total Personnel Services – Employee Benefits	\$7,504.47	\$7,504.47		\$15,008.94
500 <u>Other Purchased Services</u>				
550 Printing and Binding	7.19	7.19		14.38
580 Travel		252.65		252.65
Total Other Purchased Services	\$7.19	\$259.84		\$267.03
600 <u>Supplies</u>				
610 General Supplies	2,402.80	2,485.45		4,888.25
Total Supplies	\$2,402.80	\$2,485.45		\$4,888.25
Total 2119 Supervision of Student Services – All Other Supervision	\$33,101.46	\$33,436.76		\$66,538.22

LEA : 125239452 Upper Darby SD

Printed 12/4/2020 10:48:57 AM

General Fund (10)				
2120 Guidance Services	<u>Elementary</u>	<u>Secondary</u>	<u>Federal</u>	<u>Total</u>
100 <u>Personnel Services – Salaries</u>				
100 Personnel Services – Salaries	206,158.54	1,312,691.20	312,693.00	1,831,542.74
Total Personnel Services – Salaries	\$206,158.54	\$1,312,691.20	\$312,693.00	\$1,831,542.74
200 <u>Personnel Services – Employee Benefits</u>				
210 Group Insurance – Contracted Provider	4,876.49	355,922.26	93,566.51	454,365.26
220 Social Security Contributions	15,320.46	97,724.29	23,207.37	136,252.12
230 PSERS Retirement Contributions	123,678.32	444,468.04	53,609.92	621,756.28
250 Unemployment Compensation		631.18		631.18
260 Workers' Compensation	1,993.84	13,472.56	3,121.32	18,587.72
Total Personnel Services – Employee Benefits	\$145,869.11	\$912,218.33	\$173,505.12	\$1,231,592.56
300 <u>Purchased Professional and Technical Services</u>				
329 Professional Educational Services – Other		1,709.75		1,709.75
390 Other Purchased Professional and Technical Services	2,994.56	15,794.16	73,369.10	92,157.82
Total Purchased Professional and Technical Services	\$2,994.56	\$17,503.91	\$73,369.10	\$93,867.57
500 <u>Other Purchased Services</u>				
580 Travel		931.44		931.44
Total Other Purchased Services		\$931.44		\$931.44
600 <u>Supplies</u>				
610 General Supplies		29,183.49	27.00	29,210.49
650 Supplies & Fees – Technology Related			19,382.00	19,382.00
Total Supplies		\$29,183.49	\$19,409.00	\$48,592.49
Total 2120 Guidance Services	\$355,022.21	\$2,272,528.37	\$578,976.22	\$3,206,526.80

LEA : 125239452 Upper Darby SD

Printed 12/4/2020 10:48:57 AM

General Fund (10)				
2130 Attendance Services	<u>Elementary</u>	<u>Secondary</u>	<u>Federal</u>	<u>Total</u>
100 <u>Personnel Services – Salaries</u>				
100 Personnel Services – Salaries				337,411.48
Total Personnel Services – Salaries				\$337,411.48
200 <u>Personnel Services – Employee Benefits</u>				
210 Group Insurance – Contracted Provider				149,738.59
220 Social Security Contributions				25,354.46
230 PSERS Retirement Contributions				115,045.71
260 Workers' Compensation				3,644.65
Total Personnel Services – Employee Benefits				\$293,783.41
300 <u>Purchased Professional and Technical Services</u>				
329 Professional Educational Services – Other				3,644.52
Total Purchased Professional and Technical Services				\$3,644.52
400 <u>Purchased Property Services</u>				
440 Rentals				4,865.28
Total Purchased Property Services				\$4,865.28
500 <u>Other Purchased Services</u>				
530 Communications				637.75
550 Printing and Binding				243.00
580 Travel				2,666.70
Total Other Purchased Services				\$3,547.45
600 <u>Supplies</u>				
610 General Supplies				1,131.84
Total Supplies				\$1,131.84
Total 2130 Attendance Services				\$644,383.98

LEA : 125239452 Upper Darby SD

Printed 12/4/2020 10:48:57 AM

General Fund (10)				
2140 Psychological Services	<u>Elementary</u>	<u>Secondary</u>	<u>Federal</u>	<u>Total</u>
100 <u>Personnel Services – Salaries</u>				
100 Personnel Services – Salaries	479,798.54	320,451.50		800,250.04
Total Personnel Services – Salaries	\$479,798.54	\$320,451.50		\$800,250.04
200 <u>Personnel Services – Employee Benefits</u>				
210 Group Insurance – Contracted Provider	136,164.82	62,959.14		199,123.96
220 Social Security Contributions	37,008.96	25,519.96		62,528.92
230 PSERS Retirement Contributions	172,446.59	117,836.48		290,283.07
260 Workers' Compensation	5,516.36	3,482.25		8,998.61
Total Personnel Services – Employee Benefits	\$351,136.73	\$209,797.83		\$560,934.56
300 <u>Purchased Professional and Technical Services</u>				
329 Professional Educational Services – Other	36,690.70	3,075.00		39,765.70
330 Other Professional Services	15,733.68			15,733.68
340 Technical Services	9,338.32	24,187.67		33,525.99
Total Purchased Professional and Technical Services	\$61,762.70	\$27,262.67		\$89,025.37
500 <u>Other Purchased Services</u>				
580 Travel	20.53			20.53
Total Other Purchased Services	\$20.53			\$20.53
600 <u>Supplies</u>				
650 Supplies & Fees – Technology Related	3,850.00	1,050.00		4,900.00
Total Supplies	\$3,850.00	\$1,050.00		\$4,900.00
Total 2140 Psychological Services	\$896,568.50	\$558,562.00		\$1,455,130.50

LEA : 125239452 Upper Darby SD

Printed 12/4/2020 10:48:57 AM

General Fund (10)

2160 Social Work Services

	<u>Elementary</u>	<u>Secondary</u>	<u>Federal</u>	<u>Total</u>
100 <u>Personnel Services – Salaries</u>				
100 Personnel Services – Salaries				1,241,430.15
Total Personnel Services – Salaries				\$1,241,430.15
200 <u>Personnel Services – Employee Benefits</u>				
210 Group Insurance – Contracted Provider				290,384.66
220 Social Security Contributions				92,270.54
230 PSERS Retirement Contributions				425,738.01
250 Unemployment Compensation				512.33
260 Workers' Compensation				13,139.27
Total Personnel Services – Employee Benefits				\$822,044.81
300 <u>Purchased Professional and Technical Services</u>				
329 Professional Educational Services – Other				793.60
330 Other Professional Services				42,742.00
Total Purchased Professional and Technical Services				\$43,535.60
500 <u>Other Purchased Services</u>				
580 Travel				25.06
Total Other Purchased Services				\$25.06
Total 2160 Social Work Services				\$2,107,035.62

LEA : 125239452 Upper Darby SD

Printed 12/4/2020 10:48:57 AM

General Fund (10)

2190 Other Student Services

<u>Elementary</u>	<u>Secondary</u>	<u>Federal</u>	<u>Total</u>
-------------------	------------------	----------------	--------------

600 Supplies

610 General Supplies

		1,669.27	1,669.27
--	--	----------	----------

Total Supplies			\$1,669.27	\$1,669.27
Total 2190 Other Student Services			\$1,669.27	\$1,669.27

LEA : 125239452 Upper Darby SD

Printed 12/4/2020 10:48:57 AM

General Fund (10)

2200 Support Services – Instructional Staff	Elementary	Secondary	Federal	Total
100 <u>Personnel Services – Salaries</u>				
100 Personnel Services – Salaries	2,132,385.27	1,117,065.78	346,465.27	3,595,916.32
Total Personnel Services – Salaries	\$2,132,385.27	\$1,117,065.78	\$346,465.27	\$3,595,916.32
200 <u>Personnel Services – Employee Benefits</u>				
210 Group Insurance – Contracted Provider	455,393.76	284,096.62	63,039.00	802,529.38
220 Social Security Contributions	157,424.36	83,350.71	25,526.37	266,301.44
230 PSERS Retirement Contributions	770,233.29	392,728.89	59,577.58	1,222,539.76
240 Tuition Reimbursement	269,875.90	270,463.15		540,339.05
250 Unemployment Compensation		1,205.28		1,205.28
260 Workers' Compensation	23,079.23	11,839.27	1,921.73	36,840.23
291 Other Retirement Plans	11,391.76	10,473.92		21,865.68
Total Personnel Services – Employee Benefits	\$1,687,398.30	\$1,054,157.84	\$150,064.68	\$2,891,620.82
300 <u>Purchased Professional and Technical Services</u>				
329 Professional Educational Services – Other	10,903.65	3,055.38	108,819.00	122,778.03
360 Employee Training and Development Services	44,592.83	114,432.28	359,465.17	518,490.28
Total Purchased Professional and Technical Services	\$55,496.48	\$117,487.66	\$468,284.17	\$641,268.31
500 <u>Other Purchased Services</u>				
580 Travel	4,550.43	1,085.71	2,202.57	7,838.71
Total Other Purchased Services	\$4,550.43	\$1,085.71	\$2,202.57	\$7,838.71
600 <u>Supplies</u>				
610 General Supplies	4,074.84	4,079.82	16.00	8,170.66
630 Food	180.40	81.42		261.82
640 Books and Periodicals	9,000.41	13,499.30	3,592.39	26,092.10
650 Supplies & Fees – Technology Related	758,441.65	763,878.28		1,522,319.93
Total Supplies	\$771,697.30	\$781,538.82	\$3,608.39	\$1,556,844.51
800 <u>Other Objects</u>				
810 Dues and Fees	665.00	665.00		1,330.00
Total Other Objects	\$665.00	\$665.00		\$1,330.00
Total 2200 Support Services – Instructional Staff	\$4,652,192.78	\$3,072,000.81	\$970,625.08	\$8,694,818.67

LEA : 125239452 Upper Darby SD

Printed 12/4/2020 10:48:57 AM

General Fund (10)

2240 Computer-Assisted Instruction Support Services

	<u>Elementary</u>	<u>Secondary</u>	<u>Federal</u>	<u>Total</u>
600 <u>Supplies</u>				
650 Supplies & Fees – Technology Related	744,691.65	761,378.28		1,506,069.93
Total Supplies	\$744,691.65	\$761,378.28		\$1,506,069.93
Total 2240 Computer-Assisted Instruction Support Services	\$744,691.65	\$761,378.28		\$1,506,069.93

LEA : 125239452 Upper Darby SD

Printed 12/4/2020 10:48:57 AM

General Fund (10)				
2250 School Library Services	<u>Elementary</u>	<u>Secondary</u>	<u>Federal</u>	<u>Total</u>
100 <u>Personnel Services – Salaries</u>				
100 Personnel Services – Salaries	410,372.72	155,527.18	181,514.29	747,414.19
Total Personnel Services – Salaries	\$410,372.72	\$155,527.18	\$181,514.29	\$747,414.19
200 <u>Personnel Services – Employee Benefits</u>				
210 Group Insurance – Contracted Provider	109,726.15	72,865.62	46,791.00	229,382.77
220 Social Security Contributions	30,087.26	11,491.66	13,366.66	54,945.58
230 PSERS Retirement Contributions	171,543.49	53,330.52	31,142.43	256,016.44
260 Workers' Compensation	4,588.95	1,346.77	1,921.73	7,857.45
Total Personnel Services – Employee Benefits	\$315,945.85	\$139,034.57	\$93,221.82	\$548,202.24
300 <u>Purchased Professional and Technical Services</u>				
329 Professional Educational Services – Other	7,787.28			7,787.28
Total Purchased Professional and Technical Services	\$7,787.28			\$7,787.28
600 <u>Supplies</u>				
610 General Supplies	1,282.88	3,510.95		4,793.83
640 Books and Periodicals	6,512.02	10,821.16		17,333.18
650 Supplies & Fees – Technology Related	13,750.00	2,500.00		16,250.00
Total Supplies	\$21,544.90	\$16,832.11		\$38,377.01
Total 2250 School Library Services	\$755,650.75	\$311,393.86	\$274,736.11	\$1,341,780.72

LEA : 125239452 Upper Darby SD

Printed 12/4/2020 10:48:57 AM

General Fund (10)

2260 Instruction and Curriculum Development Services	Elementary	Secondary	Federal	Total
100 Personnel Services – Salaries				
100 Personnel Services – Salaries	872,021.74	743,104.28		1,615,126.02
Total Personnel Services – Salaries	\$872,021.74	\$743,104.28		\$1,615,126.02
200 Personnel Services – Employee Benefits				
210 Group Insurance – Contracted Provider	198,683.55	152,664.25		351,347.80
220 Social Security Contributions	64,112.37	55,326.63		119,439.00
230 PSERS Retirement Contributions	294,214.49	251,055.62		545,270.11
250 Unemployment Compensation		1,205.28		1,205.28
260 Workers' Compensation	8,832.92	7,186.98		16,019.90
291 Other Retirement Plans	11,391.76	10,473.92		21,865.68
Total Personnel Services – Employee Benefits	\$577,235.09	\$477,912.68		\$1,055,147.77
300 Purchased Professional and Technical Services				
329 Professional Educational Services – Other	756.47	695.53		1,452.00
Total Purchased Professional and Technical Services	\$756.47	\$695.53		\$1,452.00
500 Other Purchased Services				
580 Travel	1,500.43	1,085.71	816.79	3,402.93
Total Other Purchased Services	\$1,500.43	\$1,085.71	\$816.79	\$3,402.93
600 Supplies				
610 General Supplies	2,724.10	501.00	16.00	3,241.10
640 Books and Periodicals	46.70	179.70		226.40
Total Supplies	\$2,770.80	\$680.70	\$16.00	\$3,467.50
800 Other Objects				
810 Dues and Fees	665.00	665.00		1,330.00
Total Other Objects	\$665.00	\$665.00		\$1,330.00
Total 2260 Instruction and Curriculum Development Services	\$1,454,949.53	\$1,224,143.90	\$832.79	\$2,679,926.22

LEA : 125239452 Upper Darby SD

Printed 12/4/2020 10:48:57 AM

General Fund (10)

2270 Instructional Staff Professional Development Services	<u>Elementary</u>	<u>Secondary</u>	<u>Federal</u>	<u>Total</u>
100 <u>Personnel Services – Salaries</u>				
100 Personnel Services – Salaries	849,990.81	218,434.32	164,950.98	1,233,376.11
Total Personnel Services – Salaries	\$849,990.81	\$218,434.32	\$164,950.98	\$1,233,376.11
200 <u>Personnel Services – Employee Benefits</u>				
210 Group Insurance – Contracted Provider	146,984.06	58,566.75	16,248.00	221,798.81
220 Social Security Contributions	63,224.73	16,532.42	12,159.71	91,916.86
230 PSERS Retirement Contributions	304,475.31	88,342.75	28,435.15	421,253.21
240 Tuition Reimbursement	269,875.90	270,463.15		540,339.05
260 Workers' Compensation	9,657.36	3,305.52		12,962.88
Total Personnel Services – Employee Benefits	\$794,217.36	\$437,210.59	\$56,842.86	\$1,288,270.81
300 <u>Purchased Professional and Technical Services</u>				
329 Professional Educational Services – Other	2,359.90	2,359.85	108,819.00	113,538.75
360 Employee Training and Development Services	44,592.83	114,432.28	359,465.17	518,490.28
Total Purchased Professional and Technical Services	\$46,952.73	\$116,792.13	\$468,284.17	\$632,029.03
500 <u>Other Purchased Services</u>				
580 Travel	3,050.00		1,385.78	4,435.78
Total Other Purchased Services	\$3,050.00		\$1,385.78	\$4,435.78
600 <u>Supplies</u>				
610 General Supplies	67.86	67.87		135.73
630 Food	180.40	81.42		261.82
640 Books and Periodicals	2,441.69	2,498.44	3,592.39	8,532.52
Total Supplies	\$2,689.95	\$2,647.73	\$3,592.39	\$8,930.07
Total 2270 Instructional Staff Professional Development Services	\$1,696,900.85	\$775,084.77	\$695,056.18	\$3,167,041.80

LEA : 125239452 Upper Darby SD

Printed 12/4/2020 10:48:57 AM

General Fund (10)

2300 Support Services – Administration	Elementary	Secondary	Federal	Total
100 <u>Personnel Services – Salaries</u>				
100 Personnel Services – Salaries	2,361,362.65	1,970,377.92	78,749.62	4,992,456.79
Total Personnel Services – Salaries	\$2,361,362.65	\$1,970,377.92	\$78,749.62	\$4,992,456.79
200 <u>Personnel Services – Employee Benefits</u>				
210 Group Insurance – Contracted Provider	624,751.91	442,299.85	16,049.00	1,178,536.69
220 Social Security Contributions	177,002.04	147,122.19	5,972.34	368,583.42
230 PSERS Retirement Contributions	811,516.76	681,456.75	12,475.18	1,702,397.56
250 Unemployment Compensation	9,245.81			9,245.81
260 Workers' Compensation	21,480.06	19,234.80	941.37	47,264.50
280 Other Post-Employment Benefits (OPEB)				68,710.00
291 Other Retirement Plans	1,372.28	1,261.71		24,633.99
Total Personnel Services – Employee Benefits	\$1,645,368.86	\$1,291,375.30	\$35,437.89	\$3,399,371.97
300 <u>Purchased Professional and Technical Services</u>				
329 Professional Educational Services – Other	16,957.50			16,957.50
330 Other Professional Services				541,644.01
Total Purchased Professional and Technical Services	\$16,957.50			\$558,601.51
400 <u>Purchased Property Services</u>				
430 Repairs and Maintenance Services				3,065.98
440 Rentals	18,919.62	7,027.28		27,568.58
450 Construction Services				18.04
Total Purchased Property Services	\$18,919.62	\$7,027.28		\$30,652.60
500 <u>Other Purchased Services</u>				
520 Insurance – General				705,029.00
530 Communications	5,226.07	13,981.26		39,887.07
549 Other Advertising/Public Relations				17,250.37
580 Travel	8.67	8.68		5,019.66
Total Other Purchased Services	\$5,234.74	\$13,989.94		\$767,186.10
600 <u>Supplies</u>				
610 General Supplies	1,241.77	7,651.35		10,027.18
630 Food		1,157.17		1,157.17
640 Books and Periodicals				484.00
650 Supplies & Fees – Technology Related				26,890.00
Total Supplies	\$1,241.77	\$8,808.52		\$38,558.35
800 <u>Other Objects</u>				
810 Dues and Fees	9,665.00	8,803.00		198,540.06
Total Other Objects	\$9,665.00	\$8,803.00		\$198,540.06
Total 2300 Support Services – Administration	\$4,058,750.14	\$3,300,381.96	\$114,187.51	\$9,985,367.38

LEA : 125239452 Upper Darby SD

Printed 12/4/2020 10:48:57 AM

General Fund (10)				
2310 Board Services				
	<u>Elementary</u>	<u>Secondary</u>	<u>Federal</u>	<u>Total</u>
100 <u>Personnel Services – Salaries</u>				
100 Personnel Services – Salaries				54,854.82
Total Personnel Services – Salaries				\$54,854.82
200 <u>Personnel Services – Employee Benefits</u>				
210 Group Insurance – Contracted Provider				10,238.02
220 Social Security Contributions				4,085.33
230 PSERS Retirement Contributions				18,603.72
260 Workers' Compensation				524.28
Total Personnel Services – Employee Benefits				\$33,451.35
300 <u>Purchased Professional and Technical Services</u>				
330 Other Professional Services				45,244.00
Total Purchased Professional and Technical Services				\$45,244.00
500 <u>Other Purchased Services</u>				
520 Insurance – General				688,983.00
549 Other Advertising/Public Relations				17,250.37
580 Travel				2,857.78
Total Other Purchased Services				\$709,091.15
600 <u>Supplies</u>				
610 General Supplies				752.90
640 Books and Periodicals				484.00
650 Supplies & Fees – Technology Related				9,000.00
Total Supplies				\$10,236.90
800 <u>Other Objects</u>				
810 Dues and Fees				21,175.42
Total Other Objects				\$21,175.42
Total 2310 Board Services				\$874,053.64

LEA : 125239452 Upper Darby SD

Printed 12/4/2020 10:48:57 AM

General Fund (10)

2320 Board Treasurer Services	<u>Elementary</u>	<u>Secondary</u>	<u>Federal</u>	<u>Total</u>
100 <u>Personnel Services – Salaries</u>				
100 Personnel Services – Salaries				6,849.99
Total Personnel Services – Salaries				\$6,849.99
200 <u>Personnel Services – Employee Benefits</u>				
220 Social Security Contributions				517.05
230 PSERS Retirement Contributions				2,348.83
260 Workers’ Compensation				70.16
Total Personnel Services – Employee Benefits				\$2,936.04
Total 2320 Board Treasurer Services				\$9,786.03

LEA : 125239452 Upper Darby SD

Printed 12/4/2020 10:48:57 AM

General Fund (10)				
2330 Tax Assessment and Collection Services	<u>Elementary</u>	<u>Secondary</u>	<u>Federal</u>	<u>Total</u>
100 <u>Personnel Services – Salaries</u>				
100 Personnel Services – Salaries				52,344.92
Total Personnel Services – Salaries				\$52,344.92
200 <u>Personnel Services – Employee Benefits</u>				
210 Group Insurance – Contracted Provider				14,556.98
220 Social Security Contributions				3,913.90
230 PSERS Retirement Contributions				17,949.02
260 Workers' Compensation				446.32
Total Personnel Services – Employee Benefits				\$36,866.22
300 <u>Purchased Professional and Technical Services</u>				
330 Other Professional Services				11,650.00
Total Purchased Professional and Technical Services				\$11,650.00
500 <u>Other Purchased Services</u>				
520 Insurance – General				16,046.00
530 Communications				20,679.74
Total Other Purchased Services				\$36,725.74
600 <u>Supplies</u>				
650 Supplies & Fees – Technology Related				17,890.00
Total Supplies				\$17,890.00
Total 2330 Tax Assessment and Collection Services				\$155,476.88

LEA : 125239452 Upper Darby SD

Printed 12/4/2020 10:48:57 AM

General Fund (10)				
2350 Legal and Accounting Services	<u>Elementary</u>	<u>Secondary</u>	<u>Federal</u>	<u>Total</u>
300 <u>Purchased Professional and Technical Services</u>				
330 Other Professional Services				484,750.01
Total Purchased Professional and Technical Services				\$484,750.01
800 <u>Other Objects</u>				
810 Dues and Fees				148,506.00
Total Other Objects				\$148,506.00
Total 2350 Legal and Accounting Services				\$633,256.01

LEA : 125239452 Upper Darby SD

Printed 12/4/2020 10:48:57 AM

General Fund (10)

2360 Office of the Superintendent / Executive Director Services	<u>Elementary</u>	<u>Secondary</u>	<u>Federal</u>	<u>Total</u>
100 <u>Personnel Services – Salaries</u>				
100 Personnel Services – Salaries				467,916.87
Total Personnel Services – Salaries				\$467,916.87
200 <u>Personnel Services – Employee Benefits</u>				
210 Group Insurance – Contracted Provider				70,640.93
220 Social Security Contributions				29,970.57
230 PSERS Retirement Contributions				158,047.30
260 Workers' Compensation				4,567.51
280 Other Post-Employment Benefits (OPEB)				68,710.00
291 Other Retirement Plans				22,000.00
Total Personnel Services – Employee Benefits				\$353,936.31
400 <u>Purchased Property Services</u>				
430 Repairs and Maintenance Services				3,065.98
440 Rentals				1,621.68
450 Construction Services				18.04
Total Purchased Property Services				\$4,705.70
500 <u>Other Purchased Services</u>				
580 Travel				2,144.53
Total Other Purchased Services				\$2,144.53
600 <u>Supplies</u>				
610 General Supplies				381.16
Total Supplies				\$381.16
800 <u>Other Objects</u>				
810 Dues and Fees				10,390.64
Total Other Objects				\$10,390.64
Total 2360 Office of the Superintendent / Executive Director Services				\$839,475.21

LEA : 125239452 Upper Darby SD

Printed 12/4/2020 10:48:57 AM

General Fund (10)				
2380 Office of the Principal Services	<u>Elementary</u>	<u>Secondary</u>	<u>Federal</u>	<u>Total</u>
100 <u>Personnel Services – Salaries</u>				
100 Personnel Services – Salaries	2,361,362.65	1,970,377.92	78,749.62	4,410,490.19
Total Personnel Services – Salaries	\$2,361,362.65	\$1,970,377.92	\$78,749.62	\$4,410,490.19
200 <u>Personnel Services – Employee Benefits</u>				
210 Group Insurance – Contracted Provider	624,751.91	442,299.85	16,049.00	1,083,100.76
220 Social Security Contributions	177,002.04	147,122.19	5,972.34	330,096.57
230 PSERS Retirement Contributions	811,516.76	681,456.75	12,475.18	1,505,448.69
250 Unemployment Compensation	9,245.81			9,245.81
260 Workers' Compensation	21,480.06	19,234.80	941.37	41,656.23
291 Other Retirement Plans	1,372.28	1,261.71		2,633.99
Total Personnel Services – Employee Benefits	\$1,645,368.86	\$1,291,375.30	\$35,437.89	\$2,972,182.05
300 <u>Purchased Professional and Technical Services</u>				
329 Professional Educational Services – Other	16,957.50			16,957.50
Total Purchased Professional and Technical Services	\$16,957.50			\$16,957.50
400 <u>Purchased Property Services</u>				
440 Rentals	18,919.62	7,027.28		25,946.90
Total Purchased Property Services	\$18,919.62	\$7,027.28		\$25,946.90
500 <u>Other Purchased Services</u>				
530 Communications	5,226.07	13,981.26		19,207.33
580 Travel	8.67	8.68		17.35
Total Other Purchased Services	\$5,234.74	\$13,989.94		\$19,224.68
600 <u>Supplies</u>				
610 General Supplies	1,241.77	7,651.35		8,893.12
630 Food		1,157.17		1,157.17
Total Supplies	\$1,241.77	\$8,808.52		\$10,050.29
800 <u>Other Objects</u>				
810 Dues and Fees	9,665.00	8,803.00		18,468.00
Total Other Objects	\$9,665.00	\$8,803.00		\$18,468.00
Total 2380 Office of the Principal Services	\$4,058,750.14	\$3,300,381.96	\$114,187.51	\$7,473,319.61

LEA : 125239452 Upper Darby SD

Printed 12/4/2020 10:48:57 AM

General Fund (10)				
2400 Support Services – Pupil Health	<u>Elementary</u>	<u>Secondary</u>	<u>Federal</u>	<u>Total</u>
100 <u>Personnel Services – Salaries</u>				
100 Personnel Services – Salaries				1,074,766.99
Total Personnel Services – Salaries				\$1,074,766.99
200 <u>Personnel Services – Employee Benefits</u>				
210 Group Insurance – Contracted Provider				219,624.29
220 Social Security Contributions				78,809.02
230 PSERS Retirement Contributions				337,686.82
250 Unemployment Compensation				4,245.76
260 Workers' Compensation				10,484.70
Total Personnel Services – Employee Benefits				\$650,850.59
300 <u>Purchased Professional and Technical Services</u>				
329 Professional Educational Services – Other				13,201.81
330 Other Professional Services				5,088.00
Total Purchased Professional and Technical Services				\$18,289.81
500 <u>Other Purchased Services</u>				
580 Travel				51.78
Total Other Purchased Services				\$51.78
600 <u>Supplies</u>				
610 General Supplies				15,175.36
Total Supplies				\$15,175.36
Total 2400 Support Services – Pupil Health				\$1,759,134.53

LEA : 125239452 Upper Darby SD

Printed 12/4/2020 10:48:57 AM

General Fund (10)

2420 Medical Services

<u>Elementary</u>	<u>Secondary</u>	<u>Federal</u>	<u>Total</u>
-------------------	------------------	----------------	--------------

300 Purchased Professional and Technical Services

330 Other Professional Services			528.00
---------------------------------	--	--	--------

Total Purchased Professional and Technical Services			\$528.00
--	--	--	-----------------

Total 2420 Medical Services			\$528.00
------------------------------------	--	--	-----------------

LEA : 125239452 Upper Darby SD

Printed 12/4/2020 10:48:57 AM

General Fund (10)

2430 Dental Services

	<u>Elementary</u>	<u>Secondary</u>	<u>Federal</u>	<u>Total</u>
300 <u>Purchased Professional and Technical Services</u>				
330 Other Professional Services				4,560.00
Total Purchased Professional and Technical Services				\$4,560.00
Total 2430 Dental Services				\$4,560.00

LEA : 125239452 Upper Darby SD

Printed 12/4/2020 10:48:57 AM

General Fund (10)				
2440 Nursing Services	<u>Elementary</u>	<u>Secondary</u>	<u>Federal</u>	<u>Total</u>
100 <u>Personnel Services – Salaries</u>				
100 Personnel Services – Salaries				968,784.66
Total Personnel Services – Salaries				\$968,784.66
200 <u>Personnel Services – Employee Benefits</u>				
220 Social Security Contributions				71,201.72
230 PSERS Retirement Contributions				301,345.93
250 Unemployment Compensation				4,245.76
260 Workers' Compensation				9,605.70
Total Personnel Services – Employee Benefits				\$386,399.11
300 <u>Purchased Professional and Technical Services</u>				
329 Professional Educational Services – Other				13,201.81
Total Purchased Professional and Technical Services				\$13,201.81
500 <u>Other Purchased Services</u>				
580 Travel				51.78
Total Other Purchased Services				\$51.78
600 <u>Supplies</u>				
610 General Supplies				13,997.26
Total Supplies				\$13,997.26
Total 2440 Nursing Services				\$1,382,434.62

LEA : 125239452 Upper Darby SD

Printed 12/4/2020 10:48:57 AM

General Fund (10)

2450 Nonpublic Health Services	<u>Elementary</u>	<u>Secondary</u>	<u>Federal</u>	<u>Total</u>
100 <u>Personnel Services – Salaries</u>				
100 Personnel Services – Salaries				105,982.33
Total Personnel Services – Salaries				\$105,982.33
200 <u>Personnel Services – Employee Benefits</u>				
210 Group Insurance – Contracted Provider				219,624.29
220 Social Security Contributions				7,607.30
230 PSERS Retirement Contributions				36,340.89
260 Workers' Compensation				879.00
Total Personnel Services – Employee Benefits				\$264,451.48
600 <u>Supplies</u>				
610 General Supplies				1,178.10
Total Supplies				\$1,178.10
Total 2450 Nonpublic Health Services				\$371,611.91

LEA : 125239452 Upper Darby SD

Printed 12/4/2020 10:48:57 AM

General Fund (10)				
2500 Support Services – Business	Elementary	Secondary	Federal	Total
100 Personnel Services – Salaries				
100 Personnel Services – Salaries				880,733.70
Total Personnel Services – Salaries				\$880,733.70
200 Personnel Services – Employee Benefits				
210 Group Insurance – Contracted Provider				236,612.12
220 Social Security Contributions				65,926.18
230 PSERS Retirement Contributions				300,672.87
260 Workers' Compensation				9,077.54
280 Other Post-Employment Benefits (OPEB)				106,750.04
291 Other Retirement Plans				9,000.00
Total Personnel Services – Employee Benefits				\$728,038.75
300 Purchased Professional and Technical Services				
330 Other Professional Services				18,946.65
340 Technical Services				16,177.78
Total Purchased Professional and Technical Services				\$35,124.43
400 Purchased Property Services				
430 Repairs and Maintenance Services				3,720.93
440 Rentals				44,935.38
Total Purchased Property Services				\$48,656.31
500 Other Purchased Services				
530 Communications				24,064.97
580 Travel				104.42
Total Other Purchased Services				\$24,169.39
600 Supplies				
610 General Supplies				40,532.50
640 Books and Periodicals				857.27
650 Supplies & Fees – Technology Related				7,500.00
Total Supplies				\$48,889.77
800 Other Objects				
810 Dues and Fees				1,535.34
Total Other Objects				\$1,535.34
Total 2500 Support Services – Business				\$1,767,147.69

LEA : 125239452 Upper Darby SD

Printed 12/4/2020 10:48:57 AM

General Fund (10)				
2510 Fiscal Services	<u>Elementary</u>	<u>Secondary</u>	<u>Federal</u>	<u>Total</u>
100 <u>Personnel Services – Salaries</u>				
100 Personnel Services – Salaries				672,150.73
Total Personnel Services – Salaries				\$672,150.73
200 <u>Personnel Services – Employee Benefits</u>				
210 Group Insurance – Contracted Provider				159,532.19
220 Social Security Contributions				50,155.67
230 PSERS Retirement Contributions				229,657.45
260 Workers' Compensation				6,782.57
280 Other Post-Employment Benefits (OPEB)				106,750.04
291 Other Retirement Plans				9,000.00
Total Personnel Services – Employee Benefits				\$561,877.92
300 <u>Purchased Professional and Technical Services</u>				
330 Other Professional Services				18,946.65
340 Technical Services				16,177.78
Total Purchased Professional and Technical Services				\$35,124.43
400 <u>Purchased Property Services</u>				
430 Repairs and Maintenance Services				2,768.43
440 Rentals				5,442.60
Total Purchased Property Services				\$8,211.03
500 <u>Other Purchased Services</u>				
530 Communications				24,064.97
580 Travel				104.42
Total Other Purchased Services				\$24,169.39
600 <u>Supplies</u>				
610 General Supplies				5,830.81
640 Books and Periodicals				857.27
650 Supplies & Fees – Technology Related				7,500.00
Total Supplies				\$14,188.08
800 <u>Other Objects</u>				
810 Dues and Fees				1,035.34
Total Other Objects				\$1,035.34
Total 2510 Fiscal Services				\$1,316,756.92

LEA : 125239452 Upper Darby SD

Printed 12/4/2020 10:48:57 AM

General Fund (10)

2511 Supervision of Fiscal Services - Head of Component	<u>Elementary</u>	<u>Secondary</u>	<u>Federal</u>	<u>Total</u>
100 <u>Personnel Services – Salaries</u>				
100 Personnel Services – Salaries				146,656.44
Total Personnel Services – Salaries				\$146,656.44
200 <u>Personnel Services – Employee Benefits</u>				
210 Group Insurance – Contracted Provider				25,719.87
220 Social Security Contributions				10,910.56
230 PSERS Retirement Contributions				49,464.94
260 Workers' Compensation				1,396.47
280 Other Post-Employment Benefits (OPEB)				106,750.04
291 Other Retirement Plans				9,000.00
Total Personnel Services – Employee Benefits				\$203,241.88
800 <u>Other Objects</u>				
810 Dues and Fees				500.00
Total Other Objects				\$500.00
Total 2511 Supervision of Fiscal Services - Head of Component				\$350,398.32

LEA : 125239452 Upper Darby SD

Printed 12/4/2020 10:48:57 AM

General Fund (10)

2513 Receiving and Disbursing Funds Services	<u>Elementary</u>	<u>Secondary</u>	<u>Federal</u>	<u>Total</u>
100 <u>Personnel Services – Salaries</u>				
100 Personnel Services – Salaries				76,200.00
Total Personnel Services – Salaries				\$76,200.00
200 <u>Personnel Services – Employee Benefits</u>				
210 Group Insurance – Contracted Provider				29,113.36
220 Social Security Contributions				5,657.44
230 PSERS Retirement Contributions				26,129.24
260 Workers' Compensation				748.42
Total Personnel Services – Employee Benefits				\$61,648.46
Total 2513 Receiving and Disbursing Funds Services				\$137,848.46

LEA : 125239452 Upper Darby SD

Printed 12/4/2020 10:48:57 AM

General Fund (10)

2514 Payroll Services

	<u>Elementary</u>	<u>Secondary</u>	<u>Federal</u>	<u>Total</u>
100 <u>Personnel Services – Salaries</u>				
100 Personnel Services – Salaries				114,598.84
Total Personnel Services – Salaries				\$114,598.84
200 <u>Personnel Services – Employee Benefits</u>				
210 Group Insurance – Contracted Provider				29,113.36
220 Social Security Contributions				8,650.69
230 PSERS Retirement Contributions				39,296.08
260 Workers' Compensation				1,489.05
Total Personnel Services – Employee Benefits				\$78,549.18
Total 2514 Payroll Services				\$193,148.02

LEA : 125239452 Upper Darby SD

Printed 12/4/2020 10:48:57 AM

General Fund (10)				
2515 Financial Accounting Services	<u>Elementary</u>	<u>Secondary</u>	<u>Federal</u>	<u>Total</u>
100 <u>Personnel Services – Salaries</u>				
100 Personnel Services – Salaries				334,695.45
Total Personnel Services – Salaries				\$334,695.45
200 <u>Personnel Services – Employee Benefits</u>				
210 Group Insurance – Contracted Provider				75,585.60
220 Social Security Contributions				24,936.98
230 PSERS Retirement Contributions				114,767.19
260 Workers' Compensation				3,148.63
Total Personnel Services – Employee Benefits				\$218,438.40
300 <u>Purchased Professional and Technical Services</u>				
330 Other Professional Services				18,946.65
340 Technical Services				16,177.78
Total Purchased Professional and Technical Services				\$35,124.43
400 <u>Purchased Property Services</u>				
430 Repairs and Maintenance Services				2,768.43
440 Rentals				5,442.60
Total Purchased Property Services				\$8,211.03
500 <u>Other Purchased Services</u>				
530 Communications				24,064.97
580 Travel				104.42
Total Other Purchased Services				\$24,169.39
600 <u>Supplies</u>				
610 General Supplies				5,830.81
640 Books and Periodicals				857.27
650 Supplies & Fees – Technology Related				7,500.00
Total Supplies				\$14,188.08
800 <u>Other Objects</u>				
810 Dues and Fees				535.34
Total Other Objects				\$535.34
Total 2515 Financial Accounting Services				\$635,362.12

LEA : 125239452 Upper Darby SD

Printed 12/4/2020 10:48:57 AM

General Fund (10)

2520 Purchasing Services

Elementary Secondary Federal Total

100 <u>Personnel Services – Salaries</u>				
100 Personnel Services – Salaries				121,069.37
Total Personnel Services – Salaries				\$121,069.37
200 <u>Personnel Services – Employee Benefits</u>				
210 Group Insurance – Contracted Provider				33,409.59
220 Social Security Contributions				9,239.25
230 PSERS Retirement Contributions				41,007.11
260 Workers' Compensation				1,225.93
Total Personnel Services – Employee Benefits				\$84,881.88
800 <u>Other Objects</u>				
810 Dues and Fees				500.00
Total Other Objects				\$500.00
Total 2520 Purchasing Services				\$206,451.25

LEA : 125239452 Upper Darby SD

Printed 12/4/2020 10:48:57 AM

General Fund (10)				
2540 Printing, Publishing and Duplicating Services	<u>Elementary</u>	<u>Secondary</u>	<u>Federal</u>	<u>Total</u>
100 <u>Personnel Services – Salaries</u>				
100 Personnel Services – Salaries				64,230.60
Total Personnel Services – Salaries				\$64,230.60
200 <u>Personnel Services – Employee Benefits</u>				
210 Group Insurance – Contracted Provider				29,113.36
220 Social Security Contributions				4,831.49
230 PSERS Retirement Contributions				22,024.61
260 Workers' Compensation				842.95
Total Personnel Services – Employee Benefits				\$56,812.41
400 <u>Purchased Property Services</u>				
430 Repairs and Maintenance Services				952.50
440 Rentals				39,492.78
Total Purchased Property Services				\$40,445.28
600 <u>Supplies</u>				
610 General Supplies				34,701.69
Total Supplies				\$34,701.69
Total 2540 Printing, Publishing and Duplicating Services				\$196,189.98

LEA : 125239452 Upper Darby SD

Printed 12/4/2020 10:48:57 AM

General Fund (10)

2590 Other Support Services – Business	<u>Elementary</u>	<u>Secondary</u>	<u>Federal</u>	<u>Total</u>
100 <u>Personnel Services – Salaries</u>				
100 Personnel Services – Salaries				23,283.00
Total Personnel Services – Salaries				\$23,283.00
200 <u>Personnel Services – Employee Benefits</u>				
210 Group Insurance – Contracted Provider				14,556.98
220 Social Security Contributions				1,699.77
230 PSERS Retirement Contributions				7,983.70
260 Workers' Compensation				226.09
Total Personnel Services – Employee Benefits				\$24,466.54
Total 2590 Other Support Services – Business				\$47,749.54

LEA : 125239452 Upper Darby SD

Printed 12/4/2020 10:48:57 AM

General Fund (10)

2600 Operation and Maintenance of Plant Services	Elementary	Secondary	Federal	Total
100 <u>Personnel Services – Salaries</u>				
100 Personnel Services – Salaries				4,794,003.43
Total Personnel Services – Salaries				\$4,794,003.43
200 <u>Personnel Services – Employee Benefits</u>				
210 Group Insurance – Contracted Provider				1,161,720.51
220 Social Security Contributions				358,134.71
230 PSERS Retirement Contributions				1,600,853.72
250 Unemployment Compensation				16,289.27
260 Workers' Compensation				48,899.71
Total Personnel Services – Employee Benefits				\$3,185,897.92
400 <u>Purchased Property Services</u>				
410 Cleaning Services				2,127,176.95
420 Utility Services				285,332.55
430 Repairs and Maintenance Services				942,105.53
440 Rentals				508,974.15
Total Purchased Property Services				\$3,863,589.18
500 <u>Other Purchased Services</u>				
529 Other Insurance				8,464.00
530 Communications				110,303.25
550 Printing and Binding				9.44
580 Travel				4,241.60
Total Other Purchased Services				\$123,018.29
600 <u>Supplies</u>				
610 General Supplies	273,567.76	278,038.86		551,606.62
620 Energy				1,173,851.00
650 Supplies & Fees – Technology Related				44,674.88
Total Supplies	\$273,567.76	\$278,038.86		\$1,770,132.50
700 <u>Property</u>				
752 Capital Equipment – Original and Additional				1,195,821.11
Total Property				\$1,195,821.11
800 <u>Other Objects</u>				
810 Dues and Fees				8,218.45
Total Other Objects				\$8,218.45
Total 2600 Operation and Maintenance of Plant Services	\$273,567.76	\$278,038.86		\$14,940,680.88

LEA : 125239452 Upper Darby SD

Printed 12/4/2020 10:48:57 AM

General Fund (10)

2610 Supervision of Operation and Maintenance of Plant Services	<u>Elementary</u>	<u>Secondary</u>	<u>Federal</u>	<u>Total</u>
100 <u>Personnel Services – Salaries</u>				
100 Personnel Services – Salaries				284,615.82
Total Personnel Services – Salaries				\$284,615.82
200 <u>Personnel Services – Employee Benefits</u>				
210 Group Insurance – Contracted Provider				79,355.16
220 Social Security Contributions				21,442.64
230 PSERS Retirement Contributions				96,907.50
260 Workers' Compensation				2,723.74
Total Personnel Services – Employee Benefits				\$200,429.04
800 <u>Other Objects</u>				
810 Dues and Fees				500.00
Total Other Objects				\$500.00
Total 2610 Supervision of Operation and Maintenance of Plant Services				\$485,544.86

LEA : 125239452 Upper Darby SD

Printed 12/4/2020 10:48:57 AM

General Fund (10)

2611 Supervision of Operation and Maintenance of Plant Services – Head of Component	<u>Elementary</u>	<u>Secondary</u>	<u>Federal</u>	<u>Total</u>
100 <u>Personnel Services – Salaries</u>				
100 Personnel Services – Salaries				132,932.82
Total Personnel Services – Salaries				\$132,932.82
200 <u>Personnel Services – Employee Benefits</u>				
210 Group Insurance – Contracted Provider				33,391.29
220 Social Security Contributions				9,966.78
230 PSERS Retirement Contributions				44,895.54
260 Workers' Compensation				1,124.58
Total Personnel Services – Employee Benefits				\$89,378.19
800 <u>Other Objects</u>				
810 Dues and Fees				250.00
Total Other Objects				\$250.00
Total 2611 Supervision of Operation and Maintenance of Plant Services – Head of Component				\$222,561.01

LEA : 125239452 Upper Darby SD

Printed 12/4/2020 10:48:57 AM

General Fund (10)

2619 Supervision of Operation and Maintenance of Plant Services – All Other Supervision	<u>Elementary</u>	<u>Secondary</u>	<u>Federal</u>	<u>Total</u>
100 <u>Personnel Services – Salaries</u>				
100 Personnel Services – Salaries				151,683.00
Total Personnel Services – Salaries				\$151,683.00
200 <u>Personnel Services – Employee Benefits</u>				
210 Group Insurance – Contracted Provider				45,963.87
220 Social Security Contributions				11,475.86
230 PSERS Retirement Contributions				52,011.96
260 Workers' Compensation				1,599.16
Total Personnel Services – Employee Benefits				\$111,050.85
800 <u>Other Objects</u>				
810 Dues and Fees				250.00
Total Other Objects				\$250.00
Total 2619 Supervision of Operation and Maintenance of Plant Services – All Other Supervision				\$262,983.85

LEA : 125239452 Upper Darby SD

Printed 12/4/2020 10:48:57 AM

General Fund (10)				
2620 Operation of Buildings Services	<u>Elementary</u>	<u>Secondary</u>	<u>Federal</u>	<u>Total</u>
100 <u>Personnel Services – Salaries</u>				
100 Personnel Services – Salaries				1,696,964.15
Total Personnel Services – Salaries				\$1,696,964.15
200 <u>Personnel Services – Employee Benefits</u>				
210 Group Insurance – Contracted Provider				657,060.98
220 Social Security Contributions				124,588.39
230 PSERS Retirement Contributions				561,581.46
250 Unemployment Compensation				3,674.00
260 Workers' Compensation				19,636.29
Total Personnel Services – Employee Benefits				\$1,366,541.12
400 <u>Purchased Property Services</u>				
410 Cleaning Services				2,127,176.95
420 Utility Services				285,332.55
430 Repairs and Maintenance Services				872,089.64
440 Rentals				508,974.15
Total Purchased Property Services				\$3,793,573.29
500 <u>Other Purchased Services</u>				
529 Other Insurance				8,464.00
530 Communications				110,303.25
550 Printing and Binding				9.44
580 Travel				1,978.27
Total Other Purchased Services				\$120,754.96
600 <u>Supplies</u>				
610 General Supplies	225,216.85	229,208.27		454,425.12
620 Energy				1,173,851.00
Total Supplies				\$1,628,276.12
700 <u>Property</u>				
752 Capital Equipment – Original and Additional				122,262.52
Total Property				\$122,262.52
800 <u>Other Objects</u>				
810 Dues and Fees				7,468.45
Total Other Objects				\$7,468.45
Total 2620 Operation of Buildings Services	\$225,216.85	\$229,208.27		\$8,735,840.61

LEA : 125239452 Upper Darby SD

Printed 12/4/2020 10:48:57 AM

General Fund (10)

2630 Care and Upkeep of Grounds Services	<u>Elementary</u>	<u>Secondary</u>	<u>Federal</u>	<u>Total</u>
100 <u>Personnel Services – Salaries</u>				
100 Personnel Services – Salaries				480,447.96
Total Personnel Services – Salaries				\$480,447.96
200 <u>Personnel Services – Employee Benefits</u>				
210 Group Insurance – Contracted Provider				219,105.42
220 Social Security Contributions				35,269.87
230 PSERS Retirement Contributions				162,667.96
250 Unemployment Compensation				1,322.17
260 Workers' Compensation				5,511.81
Total Personnel Services – Employee Benefits				\$423,877.23
400 <u>Purchased Property Services</u>				
430 Repairs and Maintenance Services				65,197.08
Total Purchased Property Services				\$65,197.08
600 <u>Supplies</u>				
610 General Supplies	28,178.52	28,945.80		57,124.32
Total Supplies	\$28,178.52	\$28,945.80		\$57,124.32
Total 2630 Care and Upkeep of Grounds Services	\$28,178.52	\$28,945.80		\$1,026,646.59

LEA : 125239452 Upper Darby SD

Printed 12/4/2020 10:48:57 AM

General Fund (10)				
2640 Care and Upkeep of Equipment Services	<u>Elementary</u>	<u>Secondary</u>	<u>Federal</u>	<u>Total</u>
100 <u>Personnel Services – Salaries</u>				
100 Personnel Services – Salaries				426,870.86
Total Personnel Services – Salaries				\$426,870.86
200 <u>Personnel Services – Employee Benefits</u>				
210 Group Insurance – Contracted Provider				145,570.28
220 Social Security Contributions				31,336.74
230 PSERS Retirement Contributions				144,135.08
260 Workers' Compensation				4,125.08
Total Personnel Services – Employee Benefits				\$325,167.18
400 <u>Purchased Property Services</u>				
430 Repairs and Maintenance Services				1,061.92
Total Purchased Property Services				\$1,061.92
500 <u>Other Purchased Services</u>				
580 Travel				1,903.85
Total Other Purchased Services				\$1,903.85
600 <u>Supplies</u>				
610 General Supplies	5,810.85	6,680.37		12,491.22
650 Supplies & Fees – Technology Related				9,674.88
Total Supplies	\$5,810.85	\$6,680.37		\$22,166.10
700 <u>Property</u>				
752 Capital Equipment – Original and Additional				26,944.00
Total Property				\$26,944.00
Total 2640 Care and Upkeep of Equipment Services	\$5,810.85	\$6,680.37		\$804,113.91

LEA : 125239452 Upper Darby SD

Printed 12/4/2020 10:48:57 AM

General Fund (10)				
2660 Safety and Security Services	<u>Elementary</u>	<u>Secondary</u>	<u>Federal</u>	<u>Total</u>
100 <u>Personnel Services – Salaries</u>				
100 Personnel Services – Salaries				1,905,104.64
Total Personnel Services – Salaries				\$1,905,104.64
200 <u>Personnel Services – Employee Benefits</u>				
210 Group Insurance – Contracted Provider				60,628.67
220 Social Security Contributions				145,497.07
230 PSERS Retirement Contributions				635,561.72
250 Unemployment Compensation				11,293.10
260 Workers' Compensation				16,902.79
Total Personnel Services – Employee Benefits				\$869,883.35
400 <u>Purchased Property Services</u>				
430 Repairs and Maintenance Services				3,756.89
Total Purchased Property Services				\$3,756.89
500 <u>Other Purchased Services</u>				
580 Travel				359.48
Total Other Purchased Services				\$359.48
600 <u>Supplies</u>				
610 General Supplies	14,361.54	13,204.42		27,565.96
650 Supplies & Fees – Technology Related				35,000.00
Total Supplies	\$14,361.54	\$13,204.42		\$62,565.96
700 <u>Property</u>				
752 Capital Equipment – Original and Additional				1,046,614.59
Total Property				\$1,046,614.59
800 <u>Other Objects</u>				
810 Dues and Fees				250.00
Total Other Objects				\$250.00
Total 2660 Safety and Security Services	\$14,361.54	\$13,204.42		\$3,888,534.91

LEA : 125239452 Upper Darby SD

Printed 12/4/2020 10:48:57 AM

General Fund (10)				
2700 Student Transportation Services				
	<u>Elementary</u>	<u>Secondary</u>	<u>Federal</u>	<u>Total</u>
100 <u>Personnel Services – Salaries</u>				
100 Personnel Services – Salaries				5,194,890.40
Total Personnel Services – Salaries				\$5,194,890.40
200 <u>Personnel Services – Employee Benefits</u>				
210 Group Insurance – Contracted Provider				273,795.11
220 Social Security Contributions				389,334.52
230 PSERS Retirement Contributions				1,773,254.30
250 Unemployment Compensation				114,775.71
260 Workers' Compensation				50,724.03
Total Personnel Services – Employee Benefits				\$2,601,883.67
300 <u>Purchased Professional and Technical Services</u>				
329 Professional Educational Services – Other				3,175.00
390 Other Purchased Professional and Technical Services				6,829.97
Total Purchased Professional and Technical Services				\$10,004.97
400 <u>Purchased Property Services</u>				
430 Repairs and Maintenance Services				169,044.30
440 Rentals				1,621.68
Total Purchased Property Services				\$170,665.98
500 <u>Other Purchased Services</u>				
513 Contracted Carriers				37,926.01
515 Public Carriers				6,452.00
516 Student Transportation Services From the IU				176,143.63
522 Automotive Liability Insurance				241,397.00
530 Communications				1,500.00
550 Printing and Binding				64.80
591 Services Purchased Locally				2,006.30
Total Other Purchased Services				\$465,489.74
600 <u>Supplies</u>				
610 General Supplies				190,745.79
620 Energy				380,061.44
650 Supplies & Fees – Technology Related				27,216.18
Total Supplies				\$598,023.41
700 <u>Property</u>				
762 Capitalized Equipment - Replacement				624,603.99
Total Property				\$624,603.99
800 <u>Other Objects</u>				
810 Dues and Fees				388.80
Total Other Objects				\$388.80
Total 2700 Student Transportation Services				\$9,665,950.96

LEA : 125239452 Upper Darby SD

Printed 12/4/2020 10:48:57 AM

General Fund (10)

2710 Supervision of Student Transportation Services	<u>Elementary</u>	<u>Secondary</u>	<u>Federal</u>	<u>Total</u>
100 <u>Personnel Services – Salaries</u>				
100 Personnel Services – Salaries				270,386.97
Total Personnel Services – Salaries				\$270,386.97
200 <u>Personnel Services – Employee Benefits</u>				
210 Group Insurance – Contracted Provider				82,759.21
220 Social Security Contributions				21,831.56
230 PSERS Retirement Contributions				95,176.10
260 Workers' Compensation				2,661.38
Total Personnel Services – Employee Benefits				\$202,428.25
800 <u>Other Objects</u>				
810 Dues and Fees				388.80
Total Other Objects				\$388.80
Total 2710 Supervision of Student Transportation Services				\$473,204.02

LEA : 125239452 Upper Darby SD

Printed 12/4/2020 10:48:57 AM

General Fund (10)

2711 Supervision of Student Transportation Services – Head of Component	<u>Elementary</u>	<u>Secondary</u>	<u>Federal</u>	<u>Total</u>
100 <u>Personnel Services – Salaries</u>				
100 Personnel Services – Salaries				62,793.62
Total Personnel Services – Salaries				\$62,793.62
200 <u>Personnel Services – Employee Benefits</u>				
210 Group Insurance – Contracted Provider				24,126.04
220 Social Security Contributions				5,985.63
230 PSERS Retirement Contributions				27,273.77
260 Workers' Compensation				620.76
Total Personnel Services – Employee Benefits				\$58,006.20
800 <u>Other Objects</u>				
810 Dues and Fees				162.00
Total Other Objects				\$162.00
Total 2711 Supervision of Student Transportation Services – Head of Component				\$120,961.82

LEA : 125239452 Upper Darby SD

Printed 12/4/2020 10:48:57 AM

General Fund (10)

2719 Supervision of Student Transportation Services – All Other Supervision	<u>Elementary</u>	<u>Secondary</u>	<u>Federal</u>	<u>Total</u>
100 <u>Personnel Services – Salaries</u>				
100 Personnel Services – Salaries				207,593.35
Total Personnel Services – Salaries				\$207,593.35
200 <u>Personnel Services – Employee Benefits</u>				
210 Group Insurance – Contracted Provider				58,633.17
220 Social Security Contributions				15,845.93
230 PSERS Retirement Contributions				67,902.33
260 Workers' Compensation				2,040.62
Total Personnel Services – Employee Benefits				\$144,422.05
800 <u>Other Objects</u>				
810 Dues and Fees				226.80
Total Other Objects				\$226.80
Total 2719 Supervision of Student Transportation Services – All Other Supervision				\$352,242.20

LEA : 125239452 Upper Darby SD

Printed 12/4/2020 10:48:57 AM

General Fund (10)				
2720 Vehicle Operation Services	<u>Elementary</u>	<u>Secondary</u>	<u>Federal</u>	<u>Total</u>
100 <u>Personnel Services – Salaries</u>				
100 Personnel Services – Salaries				3,078,773.27
Total Personnel Services – Salaries				\$3,078,773.27
200 <u>Personnel Services – Employee Benefits</u>				
220 Social Security Contributions				217,665.47
230 PSERS Retirement Contributions				1,001,108.62
250 Unemployment Compensation				99,912.40
260 Workers' Compensation				30,083.98
Total Personnel Services – Employee Benefits				\$1,348,770.47
300 <u>Purchased Professional and Technical Services</u>				
329 Professional Educational Services – Other				3,175.00
Total Purchased Professional and Technical Services				\$3,175.00
500 <u>Other Purchased Services</u>				
513 Contracted Carriers				37,926.01
515 Public Carriers				6,452.00
516 Student Transportation Services From the IU				176,143.63
Total Other Purchased Services				\$220,521.64
600 <u>Supplies</u>				
610 General Supplies				6,799.51
650 Supplies & Fees – Technology Related				27,216.18
Total Supplies				\$34,015.69
Total 2720 Vehicle Operation Services				\$4,685,256.07

LEA : 125239452 Upper Darby SD

Printed 12/4/2020 10:48:57 AM

General Fund (10)

2730 Monitoring Services

	<u>Elementary</u>	<u>Secondary</u>	<u>Federal</u>	<u>Total</u>
100 <u>Personnel Services – Salaries</u>				
100 Personnel Services – Salaries				361,900.25
Total Personnel Services – Salaries				\$361,900.25
200 <u>Personnel Services – Employee Benefits</u>				
220 Social Security Contributions				37,548.58
230 PSERS Retirement Contributions				171,112.21
250 Unemployment Compensation				14,863.31
260 Workers' Compensation				3,443.91
Total Personnel Services – Employee Benefits				\$226,968.01
Total 2730 Monitoring Services				\$588,868.26

LEA : 125239452 Upper Darby SD

Printed 12/4/2020 10:48:57 AM

General Fund (10)				
2740 Vehicle Servicing and Maintenance Services	<u>Elementary</u>	<u>Secondary</u>	<u>Federal</u>	<u>Total</u>
100 <u>Personnel Services – Salaries</u>				
100 Personnel Services – Salaries				154,440.87
Total Personnel Services – Salaries				\$154,440.87
200 <u>Personnel Services – Employee Benefits</u>				
210 Group Insurance – Contracted Provider				128,205.62
220 Social Security Contributions				10,590.65
230 PSERS Retirement Contributions				50,009.87
260 Workers' Compensation				1,498.79
Total Personnel Services – Employee Benefits				\$190,304.93
300 <u>Purchased Professional and Technical Services</u>				
390 Other Purchased Professional and Technical Services				6,829.97
Total Purchased Professional and Technical Services				\$6,829.97
400 <u>Purchased Property Services</u>				
430 Repairs and Maintenance Services				169,044.30
440 Rentals				1,621.68
Total Purchased Property Services				\$170,665.98
500 <u>Other Purchased Services</u>				
522 Automotive Liability Insurance				241,397.00
530 Communications				1,500.00
550 Printing and Binding				64.80
591 Services Purchased Locally				2,006.30
Total Other Purchased Services				\$244,968.10
600 <u>Supplies</u>				
610 General Supplies				183,946.28
620 Energy				380,061.44
Total Supplies				\$564,007.72
700 <u>Property</u>				
762 Capitalized Equipment - Replacement				624,603.99
Total Property				\$624,603.99
Total 2740 Vehicle Servicing and Maintenance Services				\$1,955,821.56

LEA : 125239452 Upper Darby SD

Printed 12/4/2020 10:48:57 AM

General Fund (10)

2750 Nonpublic Transportation	<u>Elementary</u>	<u>Secondary</u>	<u>Federal</u>	<u>Total</u>
100 <u>Personnel Services – Salaries</u>				
100 Personnel Services – Salaries				1,329,389.04
Total Personnel Services – Salaries				\$1,329,389.04
200 <u>Personnel Services – Employee Benefits</u>				
210 Group Insurance – Contracted Provider				62,830.28
220 Social Security Contributions				101,698.26
230 PSERS Retirement Contributions				455,847.50
260 Workers' Compensation				13,035.97
Total Personnel Services – Employee Benefits				\$633,412.01
Total 2750 Nonpublic Transportation				\$1,962,801.05

LEA : 125239452 Upper Darby SD

Printed 12/4/2020 10:48:57 AM

General Fund (10)				
2800 Support Services – Central	<u>Elementary</u>	<u>Secondary</u>	<u>Federal</u>	<u>Total</u>
100 <u>Personnel Services – Salaries</u>				
100 Personnel Services – Salaries				966,696.78
Total Personnel Services – Salaries				\$966,696.78
200 <u>Personnel Services – Employee Benefits</u>				
210 Group Insurance – Contracted Provider				213,962.14
220 Social Security Contributions				69,093.44
230 PSERS Retirement Contributions				326,511.80
240 Tuition Reimbursement				105,739.95
260 Workers' Compensation				9,749.94
291 Other Retirement Plans				14,781.50
Total Personnel Services – Employee Benefits				\$739,838.77
300 <u>Purchased Professional and Technical Services</u>				
322 Professional Educational Services – Ius				450.00
330 Other Professional Services				99,659.00
340 Technical Services				22,545.82
360 Employee Training and Development Services				21,938.33
Total Purchased Professional and Technical Services				\$144,593.15
400 <u>Purchased Property Services</u>				
440 Rentals				7,306.28
450 Construction Services				220.67
Total Purchased Property Services				\$7,526.95
500 <u>Other Purchased Services</u>				
549 Other Advertising/Public Relations				216.78
580 Travel				2,480.96
Total Other Purchased Services				\$2,697.74
600 <u>Supplies</u>				
610 General Supplies				8,151.23
630 Food				6,363.14
640 Books and Periodicals				204.47
650 Supplies & Fees – Technology Related				506,050.16
Total Supplies				\$520,769.00
800 <u>Other Objects</u>				
810 Dues and Fees				4,869.00
Total Other Objects				\$4,869.00
Total 2800 Support Services – Central				\$2,386,991.39

LEA : 125239452 Upper Darby SD

Printed 12/4/2020 10:48:57 AM

General Fund (10)				
2810 Planning, Research, Development and Evaluation Services	<u>Elementary</u>	<u>Secondary</u>	<u>Federal</u>	<u>Total</u>
100 <u>Personnel Services – Salaries</u>				
100 Personnel Services – Salaries				45,333.00
Total Personnel Services – Salaries				\$45,333.00
200 <u>Personnel Services – Employee Benefits</u>				
220 Social Security Contributions				3,386.74
230 PSERS Retirement Contributions				15,544.70
Total Personnel Services – Employee Benefits				\$18,931.44
600 <u>Supplies</u>				
650 Supplies & Fees – Technology Related				3,349.24
Total Supplies				\$3,349.24
Total 2810 Planning, Research, Development and Evaluation Services				\$67,613.68

LEA : 125239452 Upper Darby SD

Printed 12/4/2020 10:48:57 AM

General Fund (10)				
2820 Information Services	<u>Elementary</u>	<u>Secondary</u>	<u>Federal</u>	<u>Total</u>
100 <u>Personnel Services – Salaries</u>				
100 Personnel Services – Salaries				98,567.85
Total Personnel Services – Salaries				\$98,567.85
200 <u>Personnel Services – Employee Benefits</u>				
210 Group Insurance – Contracted Provider				63,635.66
220 Social Security Contributions				7,397.48
230 PSERS Retirement Contributions				33,740.63
260 Workers' Compensation				2,294.96
Total Personnel Services – Employee Benefits				\$107,068.73
300 <u>Purchased Professional and Technical Services</u>				
330 Other Professional Services				4,611.44
Total Purchased Professional and Technical Services				\$4,611.44
400 <u>Purchased Property Services</u>				
440 Rentals				1,621.68
450 Construction Services				57.20
Total Purchased Property Services				\$1,678.88
500 <u>Other Purchased Services</u>				
549 Other Advertising/Public Relations				216.78
580 Travel				420.61
Total Other Purchased Services				\$637.39
600 <u>Supplies</u>				
610 General Supplies				4,203.83
630 Food				6,363.14
650 Supplies & Fees – Technology Related				54,555.15
Total Supplies				\$65,122.12
800 <u>Other Objects</u>				
810 Dues and Fees				380.00
Total Other Objects				\$380.00
Total 2820 Information Services				\$278,066.41

LEA : 125239452 Upper Darby SD

Printed 12/4/2020 10:48:57 AM

General Fund (10)

2821 Supervision of Information Services	<u>Elementary</u>	<u>Secondary</u>	<u>Federal</u>	<u>Total</u>
100 <u>Personnel Services – Salaries</u>				
100 Personnel Services – Salaries				80,017.27
Total Personnel Services – Salaries				\$80,017.27
200 <u>Personnel Services – Employee Benefits</u>				
210 Group Insurance – Contracted Provider				32,283.21
220 Social Security Contributions				5,978.25
230 PSERS Retirement Contributions				27,437.84
260 Workers' Compensation				1,562.13
Total Personnel Services – Employee Benefits				\$67,261.43
800 <u>Other Objects</u>				
810 Dues and Fees				380.00
Total Other Objects				\$380.00
Total 2821 Supervision of Information Services				\$147,658.70

LEA : 125239452 Upper Darby SD

Printed 12/4/2020 10:48:57 AM

General Fund (10)				
2823 Public Information Services	<u>Elementary</u>	<u>Secondary</u>	<u>Federal</u>	<u>Total</u>
300 <u>Purchased Professional and Technical Services</u>				
330 Other Professional Services				4,611.44
Total Purchased Professional and Technical Services				\$4,611.44
500 <u>Other Purchased Services</u>				
549 Other Advertising/Public Relations				216.78
Total Other Purchased Services				\$216.78
600 <u>Supplies</u>				
610 General Supplies				4,203.83
630 Food				6,363.14
650 Supplies & Fees – Technology Related				54,555.15
Total Supplies				\$65,122.12
Total 2823 Public Information Services				\$69,950.34

LEA : 125239452 Upper Darby SD

Printed 12/4/2020 10:48:57 AM

General Fund (10)

2824 Management Information Services	<u>Elementary</u>	<u>Secondary</u>	<u>Federal</u>	<u>Total</u>
400 <u>Purchased Property Services</u>				
440 Rentals				1,621.68
450 Construction Services				57.20
Total Purchased Property Services				\$1,678.88
500 <u>Other Purchased Services</u>				
580 Travel				420.61
Total Other Purchased Services				\$420.61
Total 2824 Management Information Services				\$2,099.49

LEA : 125239452 Upper Darby SD

Printed 12/4/2020 10:48:57 AM

General Fund (10)

2829 Other Information Services	<u>Elementary</u>	<u>Secondary</u>	<u>Federal</u>	<u>Total</u>
100 <u>Personnel Services – Salaries</u>				
100 Personnel Services – Salaries				18,550.58
Total Personnel Services – Salaries				\$18,550.58
200 <u>Personnel Services – Employee Benefits</u>				
210 Group Insurance – Contracted Provider				31,352.45
220 Social Security Contributions				1,419.23
230 PSERS Retirement Contributions				6,302.79
260 Workers' Compensation				732.83
Total Personnel Services – Employee Benefits				\$39,807.30
Total 2829 Other Information Services				\$58,357.88

LEA : 125239452 Upper Darby SD

Printed 12/4/2020 10:48:57 AM

General Fund (10)				
2830 Staff Services				
	<u>Elementary</u>	<u>Secondary</u>	<u>Federal</u>	<u>Total</u>
100 <u>Personnel Services – Salaries</u>				
100 Personnel Services – Salaries				478,858.43
Total Personnel Services – Salaries				\$478,858.43
200 <u>Personnel Services – Employee Benefits</u>				
210 Group Insurance – Contracted Provider				98,263.08
220 Social Security Contributions				34,327.43
230 PSERS Retirement Contributions				161,272.89
240 Tuition Reimbursement				105,739.95
260 Workers' Compensation				4,175.76
291 Other Retirement Plans				9,000.00
Total Personnel Services – Employee Benefits				\$412,779.11
300 <u>Purchased Professional and Technical Services</u>				
322 Professional Educational Services – Ius				450.00
330 Other Professional Services				71,717.56
360 Employee Training and Development Services				21,938.33
Total Purchased Professional and Technical Services				\$94,105.89
400 <u>Purchased Property Services</u>				
440 Rentals				1,049.00
450 Construction Services				163.47
Total Purchased Property Services				\$1,212.47
500 <u>Other Purchased Services</u>				
580 Travel				1,786.92
Total Other Purchased Services				\$1,786.92
600 <u>Supplies</u>				
610 General Supplies				2,779.26
640 Books and Periodicals				204.47
650 Supplies & Fees – Technology Related				50,988.02
Total Supplies				\$53,971.75
800 <u>Other Objects</u>				
810 Dues and Fees				4,189.00
Total Other Objects				\$4,189.00
Total 2830 Staff Services				\$1,046,903.57

LEA : 125239452 Upper Darby SD

Printed 12/4/2020 10:48:57 AM

General Fund (10)

2831 Supervision of Staff Services

	<u>Elementary</u>	<u>Secondary</u>	<u>Federal</u>	<u>Total</u>
100 <u>Personnel Services – Salaries</u>				
100 Personnel Services – Salaries				214,055.42
Total Personnel Services – Salaries				\$214,055.42
200 <u>Personnel Services – Employee Benefits</u>				
210 Group Insurance – Contracted Provider				36,501.73
220 Social Security Contributions				14,373.91
230 PSERS Retirement Contributions				72,274.52
260 Workers' Compensation				2,044.51
291 Other Retirement Plans				9,000.00
Total Personnel Services – Employee Benefits				\$134,194.67
500 <u>Other Purchased Services</u>				
580 Travel				1,786.92
Total Other Purchased Services				\$1,786.92
800 <u>Other Objects</u>				
810 Dues and Fees				2,989.00
Total Other Objects				\$2,989.00
Total 2831 Supervision of Staff Services				\$353,026.01

LEA : 125239452 Upper Darby SD

Printed 12/4/2020 10:48:57 AM

General Fund (10)				
2833 Staff Accounting Services	<u>Elementary</u>	<u>Secondary</u>	<u>Federal</u>	<u>Total</u>
100 <u>Personnel Services – Salaries</u>				
100 Personnel Services – Salaries				264,803.01
Total Personnel Services – Salaries				\$264,803.01
200 <u>Personnel Services – Employee Benefits</u>				
210 Group Insurance – Contracted Provider				61,761.35
220 Social Security Contributions				19,953.52
230 PSERS Retirement Contributions				88,998.37
260 Workers' Compensation				2,131.25
Total Personnel Services – Employee Benefits				\$172,844.49
300 <u>Purchased Professional and Technical Services</u>				
322 Professional Educational Services – Ius				450.00
330 Other Professional Services				26,000.00
Total Purchased Professional and Technical Services				\$26,450.00
400 <u>Purchased Property Services</u>				
440 Rentals				1,049.00
450 Construction Services				163.47
Total Purchased Property Services				\$1,212.47
600 <u>Supplies</u>				
610 General Supplies				2,779.26
640 Books and Periodicals				204.47
650 Supplies & Fees – Technology Related				50,988.02
Total Supplies				\$53,971.75
800 <u>Other Objects</u>				
810 Dues and Fees				1,200.00
Total Other Objects				\$1,200.00
Total 2833 Staff Accounting Services				\$520,481.72

LEA : 125239452 Upper Darby SD

Printed 12/4/2020 10:48:57 AM

General Fund (10)

2834 Staff Development Services – Non-Instructional, Certified Staff Only	<u>Elementary</u>	<u>Secondary</u>	<u>Federal</u>	<u>Total</u>
200 <u>Personnel Services – Employee Benefits</u>				
240 Tuition Reimbursement				76,650.40
Total Personnel Services – Employee Benefits				\$76,650.40
300 <u>Purchased Professional and Technical Services</u>				
330 Other Professional Services				45,717.56
360 Employee Training and Development Services				2,245.00
Total Purchased Professional and Technical Services				\$47,962.56
Total 2834 Staff Development Services – Non-Instructional, Certified Staff Only				\$124,612.96

LEA : 125239452 Upper Darby SD

Printed 12/4/2020 10:48:57 AM

General Fund (10)

2836 Staff Development Services – Non-Instructional, Non-Certified Staff Only	<u>Elementary</u>	<u>Secondary</u>	<u>Federal</u>	<u>Total</u>
200 <u>Personnel Services – Employee Benefits</u>				
240 Tuition Reimbursement				29,089.55
Total Personnel Services – Employee Benefits				\$29,089.55
300 <u>Purchased Professional and Technical Services</u>				
360 Employee Training and Development Services				19,693.33
Total Purchased Professional and Technical Services				\$19,693.33
Total 2836 Staff Development Services – Non-Instructional, Non-Certified Staff Only				\$48,782.88

LEA : 125239452 Upper Darby SD

Printed 12/4/2020 10:48:57 AM

General Fund (10)				
2840 Data Processing Services				
	<u>Elementary</u>	<u>Secondary</u>	<u>Federal</u>	<u>Total</u>
100 <u>Personnel Services – Salaries</u>				
100 Personnel Services – Salaries				195,357.10
Total Personnel Services – Salaries				\$195,357.10
200 <u>Personnel Services – Employee Benefits</u>				
210 Group Insurance – Contracted Provider				33,410.19
220 Social Security Contributions				13,334.51
230 PSERS Retirement Contributions				65,959.53
260 Workers' Compensation				1,865.21
291 Other Retirement Plans				2,999.10
Total Personnel Services – Employee Benefits				\$117,568.54
300 <u>Purchased Professional and Technical Services</u>				
330 Other Professional Services				23,330.00
340 Technical Services				22,545.82
Total Purchased Professional and Technical Services				\$45,875.82
400 <u>Purchased Property Services</u>				
440 Rentals				4,635.60
Total Purchased Property Services				\$4,635.60
500 <u>Other Purchased Services</u>				
580 Travel				273.43
Total Other Purchased Services				\$273.43
600 <u>Supplies</u>				
610 General Supplies				1,168.14
650 Supplies & Fees – Technology Related				397,157.75
Total Supplies				\$398,325.89
800 <u>Other Objects</u>				
810 Dues and Fees				250.00
Total Other Objects				\$250.00
Total 2840 Data Processing Services				\$762,286.38

LEA : 125239452 Upper Darby SD

Printed 12/4/2020 10:48:57 AM

General Fund (10)

2850 State and Federal Agency Liaison Services	<u>Elementary</u>	<u>Secondary</u>	<u>Federal</u>	<u>Total</u>
100 <u>Personnel Services – Salaries</u>				
100 Personnel Services – Salaries				148,580.40
Total Personnel Services – Salaries				\$148,580.40
200 <u>Personnel Services – Employee Benefits</u>				
210 Group Insurance – Contracted Provider				18,653.21
220 Social Security Contributions				10,647.28
230 PSERS Retirement Contributions				49,994.05
260 Workers' Compensation				1,414.01
291 Other Retirement Plans				2,782.40
Total Personnel Services – Employee Benefits				\$83,490.95
800 <u>Other Objects</u>				
810 Dues and Fees				50.00
Total Other Objects				\$50.00
Total 2850 State and Federal Agency Liaison Services				\$232,121.35

LEA : 125239452 Upper Darby SD

Printed 12/4/2020 10:48:57 AM

General Fund (10)

2900 Other Support Services	<u>Elementary</u>	<u>Secondary</u>	<u>Federal</u>	<u>Total</u>
500 <u>Other Purchased Services</u>				
595 IU Payments By Withholding				87,105.00
Total Other Purchased Services				\$87,105.00
Total 2900 Other Support Services				\$87,105.00

LEA : 125239452 Upper Darby SD

Printed 12/4/2020 10:48:57 AM

General Fund (10)

2910 Support Services Not Listed Elsewhere In the 2000 Series

Elementary Secondary Federal Total

500 Other Purchased Services

595 IU Payments By Withholding 87,105.00

Total Other Purchased Services \$87,105.00

Total 2910 Support Services Not Listed Elsewhere In the 2000 Series \$87,105.00

LEA : 125239452 Upper Darby SD

Printed 12/4/2020 10:49:09 AM

General Fund (10)	
3000 Operation of Non-Instructional Services	<u>Total</u>
100 <u>Personnel Services – Salaries</u>	
100 Personnel Services – Salaries	2,796,143.95
Total Personnel Services – Salaries	\$2,796,143.95
200 <u>Personnel Services – Employee Benefits</u>	
210 Group Insurance – Contracted Provider	182,579.79
220 Social Security Contributions	211,949.99
230 PSERS Retirement Contributions	654,449.83
250 Unemployment Compensation	26,690.26
260 Workers' Compensation	28,446.79
291 Other Retirement Plans	56,483.64
Total Personnel Services – Employee Benefits	\$1,160,600.30
300 <u>Purchased Professional and Technical Services</u>	
322 Professional Educational Services – Ius	1,224.00
329 Professional Educational Services – Other	1,600.00
330 Other Professional Services	26,863.75
340 Technical Services	24,184.87
390 Other Purchased Professional and Technical Services	90,721.53
Total Purchased Professional and Technical Services	\$144,594.15
400 <u>Purchased Property Services</u>	
430 Repairs and Maintenance Services	40,631.94
440 Rentals	40,700.27
Total Purchased Property Services	\$81,332.21
500 <u>Other Purchased Services</u>	
520 Insurance – General	48,737.25
530 Communications	20,113.78
549 Other Advertising/Public Relations	22,636.57
550 Printing and Binding	12,640.92
592 Services Purchased From Another LEA Within the State	5,730.12
599 Other Miscellaneous Purchased Services	73,000.00
Total Other Purchased Services	\$182,858.64
600 <u>Supplies</u>	
610 General Supplies	337,067.00
630 Food	18,511.44
640 Books and Periodicals	4,917.21
650 Supplies & Fees – Technology Related	4,854.00
Total Supplies	\$365,349.65
700 <u>Property</u>	
762 Capitalized Equipment - Replacement	125,444.00
Total Property	\$125,444.00
800 <u>Other Objects</u>	
810 Dues and Fees	9,947.00

LEA : 125239452 Upper Darby SD

Printed 12/4/2020 10:49:09 AM

General Fund (10)

3000 Operation of Non-Instructional Services

	<u>Total</u>
Total Other Objects	\$9,947.00
Total 3000 Operation of Non-Instructional Services	\$4,866,269.90

LEA : 125239452 Upper Darby SD

Printed 12/4/2020 10:49:09 AM

General Fund (10)				
3200 Student Activities				
	<u>Elementary</u>	<u>Secondary</u>	<u>Federal</u>	<u>Total</u>
100 <u>Personnel Services – Salaries</u>				
100 Personnel Services – Salaries				1,086,376.13
Total Personnel Services – Salaries				\$1,086,376.13
200 <u>Personnel Services – Employee Benefits</u>				
210 Group Insurance – Contracted Provider				47,963.87
220 Social Security Contributions				82,036.30
230 PSERS Retirement Contributions				336,865.32
250 Unemployment Compensation				6,544.78
260 Workers' Compensation				11,564.45
291 Other Retirement Plans				56,000.00
Total Personnel Services – Employee Benefits				\$540,974.72
300 <u>Purchased Professional and Technical Services</u>				
330 Other Professional Services				26,863.75
390 Other Purchased Professional and Technical Services				750.00
Total Purchased Professional and Technical Services				\$27,613.75
400 <u>Purchased Property Services</u>				
430 Repairs and Maintenance Services				36,622.82
Total Purchased Property Services				\$36,622.82
500 <u>Other Purchased Services</u>				
520 Insurance – General				48,737.25
592 Services Purchased From Another LEA Within the State				5,730.12
599 Other Miscellaneous Purchased Services				73,000.00
Total Other Purchased Services				\$127,467.37
600 <u>Supplies</u>				
610 General Supplies				269,391.25
650 Supplies & Fees – Technology Related				4,774.00
Total Supplies				\$274,165.25
700 <u>Property</u>				
762 Capitalized Equipment - Replacement				125,444.00
Total Property				\$125,444.00
800 <u>Other Objects</u>				
810 Dues and Fees				9,947.00
Total Other Objects				\$9,947.00
Total 3200 Student Activities				\$2,228,611.04

LEA : 125239452 Upper Darby SD

Printed 12/4/2020 10:49:09 AM

General Fund (10)

3300 Community Services

100 Personnel Services – Salaries

100 Personnel Services – Salaries				1,709,767.82
-----------------------------------	--	--	--	--------------

Total Personnel Services – Salaries				\$1,709,767.82
--	--	--	--	-----------------------

200 Personnel Services – Employee Benefits

210 Group Insurance – Contracted Provider				134,615.92
220 Social Security Contributions				129,913.69
230 PSERS Retirement Contributions				317,584.51
250 Unemployment Compensation				20,145.48
260 Workers' Compensation				16,882.34
291 Other Retirement Plans				483.64

Total Personnel Services – Employee Benefits				\$619,625.58
---	--	--	--	---------------------

300 Purchased Professional and Technical Services

322 Professional Educational Services – Ius			1,224.00	1,224.00
329 Professional Educational Services – Other				1,600.00
340 Technical Services				24,184.87
390 Other Purchased Professional and Technical Services				89,971.53

Total Purchased Professional and Technical Services			\$1,224.00	\$116,980.40
--	--	--	-------------------	---------------------

400 Purchased Property Services

430 Repairs and Maintenance Services				4,009.12
440 Rentals				40,700.27

Total Purchased Property Services				\$44,709.39
--	--	--	--	--------------------

500 Other Purchased Services

530 Communications			5,621.40	20,113.78
549 Other Advertising/Public Relations				22,636.57
550 Printing and Binding				12,640.92

Total Other Purchased Services			\$5,621.40	\$55,391.27
---------------------------------------	--	--	-------------------	--------------------

600 Supplies

610 General Supplies			20,492.94	67,675.75
630 Food			18,511.44	18,511.44
640 Books and Periodicals			4,917.21	4,917.21
650 Supplies & Fees – Technology Related				80.00

Total Supplies			\$43,921.59	\$91,184.40
-----------------------	--	--	--------------------	--------------------

Total 3300 Community Services			\$50,766.99	\$2,637,658.86
--------------------------------------	--	--	--------------------	-----------------------

LEA : 125239452 Upper Darby SD

Printed 12/4/2020 10:49:20 AM

General Fund (10)	
4000 Facilities Acquisition, Construction and Improvement Services	<u>Total</u>
300 <u>Purchased Professional and Technical Services</u>	
330 Other Professional Services	1,950.00
Total Purchased Professional and Technical Services	\$1,950.00
400 <u>Purchased Property Services</u>	
450 Construction Services	2,139,467.93
Total Purchased Property Services	\$2,139,467.93
700 <u>Property</u>	
768 Capitalized Technology Software - Replacement	125,335.00
Total Property	\$125,335.00
Total 4000 Facilities Acquisition, Construction and Improvement Services	\$2,266,752.93

LEA : 125239452 Upper Darby SD

Printed 12/4/2020 10:49:20 AM

General Fund (10)

4200 Existing Site Improvement Services	<u>Elementary</u>	<u>Secondary</u>	<u>Federal</u>	<u>Total</u>
400 <u>Purchased Property Services</u>				
450 Construction Services				1,681,551.93
Total Purchased Property Services				\$1,681,551.93
Total 4200 Existing Site Improvement Services				\$1,681,551.93

LEA : 125239452 Upper Darby SD

Printed 12/4/2020 10:49:20 AM

General Fund (10)

4300 Architecture and Engineering Services / Educational Specifications Development – Original and Additional	<u>Elementary</u>	<u>Secondary</u>	<u>Federal</u>	<u>Total</u>
300 <u>Purchased Professional and Technical Services</u>				
330 Other Professional Services				1,950.00
Total Purchased Professional and Technical Services				\$1,950.00
Total 4300 Architecture and Engineering Services / Educational Specifications Development – Original and Additional				\$1,950.00

LEA : 125239452 Upper Darby SD

Printed 12/4/2020 10:49:20 AM

General Fund (10)

4600 Existing Building Improvement Services	<u>Elementary</u>	<u>Secondary</u>	<u>Federal</u>	<u>Total</u>
400 <u>Purchased Property Services</u>				
450 Construction Services				457,916.00
Total Purchased Property Services				\$457,916.00
700 <u>Property</u>				
768 Capitalized Technology Software - Replacement				125,335.00
Total Property				\$125,335.00
Total 4600 Existing Building Improvement Services				\$583,251.00

LEA : 125239452 Upper Darby SD

Printed 12/4/2020 10:49:32 AM

General Fund (10)	
5000 Other Expenditures and Financing Uses	<u>Total</u>
800 <u>Other Objects</u>	
830 Interest	1,090,987.22
880 Refunds of Prior Years' Receipts	1,454.22
Total Other Objects	\$1,092,441.44
900 <u>Other Uses of Funds</u>	
910 Redemption of Principal	5,882,503.79
920 Authority Obligations	215,161.00
932 Capital Reserve Fund Transfers Applicable To Fund 32	3,150,000.00
Total Other Uses of Funds	\$9,247,664.79
Total 5000 Other Expenditures and Financing Uses	\$10,340,106.23

LEA : 125239452 Upper Darby SD

Printed 12/4/2020 10:49:32 AM

General Fund (10)

5100 Debt Service / Other Expenditures and Financing Uses	<u>Elementary</u>	<u>Secondary</u>	<u>Federal</u>	<u>Total</u>
800 <u>Other Objects</u>				
830 Interest			229,500.00	1,090,987.22
880 Refunds of Prior Years' Receipts				1,454.22
Total Other Objects			\$229,500.00	\$1,092,441.44
900 <u>Other Uses of Funds</u>				
910 Redemption of Principal				5,882,503.79
920 Authority Obligations				215,161.00
Total Other Uses of Funds				\$6,097,664.79
Total 5100 Debt Service / Other Expenditures and Financing Uses			\$229,500.00	\$7,190,106.23

LEA : 125239452 Upper Darby SD

Printed 12/4/2020 10:49:32 AM

General Fund (10)

5110 Debt Service	<u>Elementary</u>	<u>Secondary</u>	<u>Federal</u>	<u>Total</u>
800 <u>Other Objects</u>				
830 Interest			229,500.00	1,090,987.22
Total Other Objects			\$229,500.00	\$1,090,987.22
900 <u>Other Uses of Funds</u>				
910 Redemption of Principal				5,882,503.79
920 Authority Obligations				215,161.00
Total Other Uses of Funds				\$6,097,664.79
Total 5110 Debt Service			\$229,500.00	\$7,188,652.01

LEA : 125239452 Upper Darby SD

Printed 12/4/2020 10:49:32 AM

General Fund (10)

5130 Refund of Prior Year Revenues / Receipts	<u>Elementary</u>	<u>Secondary</u>	<u>Federal</u>	<u>Total</u>
800 <u>Other Objects</u>				
880 Refunds of Prior Years' Receipts				1,454.22
Total Other Objects				\$1,454.22
Total 5130 Refund of Prior Year Revenues / Receipts				\$1,454.22

LEA : 125239452 Upper Darby SD

Printed 12/4/2020 10:49:32 AM

General Fund (10)

5200 Interfund Transfers – Out	<u>Elementary</u>	<u>Secondary</u>	<u>Federal</u>	<u>Total</u>
900 <u>Other Uses of Funds</u>				
932 Capital Reserve Fund Transfers Applicable To Fund 32				3,150,000.00
Total Other Uses of Funds				\$3,150,000.00
Total 5200 Interfund Transfers – Out				\$3,150,000.00

LEA : 125239452 Upper Darby SD

Printed 12/4/2020 10:49:32 AM

General Fund (10)

5230 Capital Projects Fund Transfers	<u>Elementary</u>	<u>Secondary</u>	<u>Federal</u>	<u>Total</u>
900 <u>Other Uses of Funds</u>				
932 Capital Reserve Fund Transfers Applicable To Fund 32				3,150,000.00
Total Other Uses of Funds				\$3,150,000.00
Total 5230 Capital Projects Fund Transfers				\$3,150,000.00

LEA : 125239452 Upper Darby SD

Printed 12/4/2020 10:49:24 AM

Capital Reserve Fund - § 1431 (32)

4000 Facilities Acquisition, Construction and Improvement Services

Total

300 Purchased Professional and Technical Services

330 Other Professional Services	5,393.28
---------------------------------	----------

Total Purchased Professional and Technical Services	\$5,393.28
---	------------

400 Purchased Property Services

450 Construction Services	15,574.00
---------------------------	-----------

Total Purchased Property Services	\$15,574.00
-----------------------------------	-------------

700 Property

762 Capitalized Equipment - Replacement	492,534.10
---	------------

Total Property	\$492,534.10
----------------	--------------

Total 4000 Facilities Acquisition, Construction and Improvement Services	\$513,501.38
--	--------------

LEA : 125239452 Upper Darby SD

Printed 12/4/2020 10:49:24 AM

Capital Reserve Fund - § 1431 (32)

4200 Existing Site Improvement Services

Elementary Secondary Federal Total

700 <u>Property</u>				
762 Capitalized Equipment - Replacement				189,215.30
Total Property				\$189,215.30
Total 4200 Existing Site Improvement Services				\$189,215.30

LEA : 125239452 Upper Darby SD

Printed 12/4/2020 10:49:24 AM

Capital Reserve Fund - § 1431 (32)

4400 Architecture and Engineering Services / Educational Specifications – Improvements

Elementary

Secondary

Federal

Total

300 Purchased Professional and Technical Services

330 Other Professional Services

5,393.28

Total Purchased Professional and Technical Services

\$5,393.28

Total 4400 Architecture and Engineering Services / Educational Specifications – Improvements

\$5,393.28

LEA : 125239452 Upper Darby SD

Printed 12/4/2020 10:49:24 AM

Capital Reserve Fund - § 1431 (32)				
4600 Existing Building Improvement Services	<u>Elementary</u>	<u>Secondary</u>	<u>Federal</u>	<u>Total</u>
400 <u>Purchased Property Services</u>				
450 Construction Services				15,574.00
Total Purchased Property Services				\$15,574.00
700 <u>Property</u>				
762 Capitalized Equipment - Replacement				303,318.80
Total Property				\$303,318.80
Total 4600 Existing Building Improvement Services				\$318,892.80

LEA : 125239452 Upper Darby SD

Printed 12/4/2020 10:49:03 AM

Other Capital Projects Fund (39)

2000 Support Services

Total

300 Purchased Professional and Technical Services

330 Other Professional Services	293,836.85
---------------------------------	------------

Total Purchased Professional and Technical Services	\$293,836.85
---	--------------

Total 2000 Support Services	\$293,836.85
-----------------------------	--------------

LEA : 125239452 Upper Darby SD

Printed 12/4/2020 10:49:03 AM

Other Capital Projects Fund (39)

2300 Support Services – Administration

	<u>Elementary</u>	<u>Secondary</u>	<u>Federal</u>	<u>Total</u>
300 <u>Purchased Professional and Technical Services</u>				
330 Other Professional Services				293,836.85
Total Purchased Professional and Technical Services				\$293,836.85
Total 2300 Support Services – Administration				\$293,836.85

LEA : 125239452 Upper Darby SD

Printed 12/4/2020 10:49:03 AM

Other Capital Projects Fund (39)

2350 Legal and Accounting Services

<u>Elementary</u>	<u>Secondary</u>	<u>Federal</u>	<u>Total</u>
-------------------	------------------	----------------	--------------

300 Purchased Professional and Technical Services

330 Other Professional Services			293,836.85
---------------------------------	--	--	------------

Total Purchased Professional and Technical Services			\$293,836.85
--	--	--	---------------------

Total 2350 Legal and Accounting Services			\$293,836.85
---	--	--	---------------------

LEA : 125239452 Upper Darby SD

Printed 12/4/2020 10:49:28 AM

Other Capital Projects Fund (39)

4000 Facilities Acquisition, Construction and Improvement Services

Total

300 Purchased Professional and Technical Services

330 Other Professional Services	1,813,791.30
---------------------------------	--------------

Total Purchased Professional and Technical Services	\$1,813,791.30
--	-----------------------

400 Purchased Property Services

430 Repairs and Maintenance Services	32,925.00
--------------------------------------	-----------

450 Construction Services	4,220,332.20
---------------------------	--------------

Total Purchased Property Services	\$4,253,257.20
--	-----------------------

Total 4000 Facilities Acquisition, Construction and Improvement Services	\$6,067,048.50
---	-----------------------

LEA : 125239452 Upper Darby SD

Printed 12/4/2020 10:49:28 AM

Other Capital Projects Fund (39)

4200 Existing Site Improvement Services

Elementary

Secondary

Federal

Total

400 Purchased Property Services

450 Construction Services

137,800.00

Total Purchased Property Services				\$137,800.00
Total 4200 Existing Site Improvement Services				\$137,800.00

LEA : 125239452 Upper Darby SD

Printed 12/4/2020 10:49:28 AM

Other Capital Projects Fund (39)

4400 Architecture and Engineering Services / Educational Specifications – Improvements	<u>Elementary</u>	<u>Secondary</u>	<u>Federal</u>	<u>Total</u>
300 <u>Purchased Professional and Technical Services</u>				
330 Other Professional Services				1,813,791.30
Total Purchased Professional and Technical Services				\$1,813,791.30
Total 4400 Architecture and Engineering Services / Educational Specifications – Improvements				\$1,813,791.30

LEA : 125239452 Upper Darby SD

Printed 12/4/2020 10:49:28 AM

Other Capital Projects Fund (39)

4600 Existing Building Improvement Services

<u>Elementary</u>	<u>Secondary</u>	<u>Federal</u>	<u>Total</u>
-------------------	------------------	----------------	--------------

400 Purchased Property Services

430 Repairs and Maintenance Services			32,925.00
--------------------------------------	--	--	-----------

450 Construction Services			4,082,532.20
---------------------------	--	--	--------------

Total Purchased Property Services			\$4,115,457.20
--	--	--	-----------------------

Total 4600 Existing Building Improvement Services			\$4,115,457.20
--	--	--	-----------------------

LEA : 125239452 Upper Darby SD

Printed 12/4/2020 10:49:49 AM

	<u>General Fund(10)</u>	<u>Student Sponsored Activity Fund(21)</u>	<u>Public Purpose Trust(27)</u>	<u>Other Compt Approved (28)</u>	<u>Athletic / Activity(29)</u>
1000 <u>Instruction</u>					
1100 Regular Programs - Elementary / Secondary	90,840,775.40				
1200 Special Programs - Elementary / Secondary	41,096,270.40				
1300 Vocational Education	1,219,487.19				
1400 Other Instructional Programs - Elementary / Secondary	1,815,268.96				
1500 Nonpublic School Programs	271,864.00				
1600 Adult Education Programs	856,215.00				
Total Instruction	\$136,099,880.95				
2000 <u>Support Services</u>					
2100 Support Services - Students	7,774,754.85				
2200 Support Services - Instructional Staff	8,694,818.67				
2300 Support Services - Administration	9,985,367.38				
2400 Support Services - Pupil Health	1,759,134.53				
2500 Support Services - Business	1,767,147.69				
2600 Operation and Maintenance of Plant Services	14,940,680.88				
2700 Student Transportation Services	9,665,950.96				
2800 Support Services - Central	2,386,991.39				
2900 Other Support Services	87,105.00				
Total Support Services	\$57,061,951.35				
3000 <u>Operation of Non-Instructional Services</u>					
3200 Student Activities	2,228,611.04				
3300 Community Services	2,637,658.86				
Total Operation of Non-Instructional Services	\$4,866,269.90				
4000 <u>Facilities Acquisition, Construction and Improvement Services</u>					
4200 Existing Site Improvement Services	1,681,551.93				
4300 Architecture and Engineering Services / Educational Specifications Development - Original and Additional	1,950.00				
4400 Architecture and Engineering Services / Educational Specifications - Improvements					
4600 Existing Building Improvement Services	583,251.00				
Total Facilities Acquisition, Construction and Improvement Services	\$2,266,752.93				
5000 <u>Other Expenditures and Financing Uses</u>					
5100 Debt Service / Other Expenditures and Financing Uses	7,190,106.23				
5200 Interfund Transfers - Out	3,150,000.00				
Total Other Expenditures and Financing Uses	\$10,340,106.23				
TOTAL ACTUAL EXPENDITURES & OTHER FINANCING USES	\$210,634,961.36				

LEA : 125239452 Upper Darby SD

Printed 12/4/2020 10:49:49 AM

	<u>Capital Reserve (690.1850)(31)</u>	<u>Capital Reserve (1431)(32)</u>	<u>Other Capital Projects Fund(39)</u>	<u>Debt Service(40)</u>	<u>Permanent(90)</u>
1000 <u>Instruction</u>					
1100 Regular Programs - Elementary / Secondary					
1200 Special Programs - Elementary / Secondary					
1300 Vocational Education					
1400 Other Instructional Programs - Elementary / Secondary					
1500 Nonpublic School Programs					
1600 Adult Education Programs					
Total Instruction					
2000 <u>Support Services</u>					
2100 Support Services - Students					
2200 Support Services - Instructional Staff					
2300 Support Services - Administration			293,836.85		
2400 Support Services - Pupil Health					
2500 Support Services - Business					
2600 Operation and Maintenance of Plant Services					
2700 Student Transportation Services					
2800 Support Services - Central					
2900 Other Support Services					
Total Support Services			\$293,836.85		
3000 <u>Operation of Non-Instructional Services</u>					
3200 Student Activities					
3300 Community Services					
Total Operation of Non-Instructional Services					
4000 <u>Facilities Acquisition, Construction and Improvement Services</u>					
4200 Existing Site Improvement Services		189,215.30	137,800.00		
4300 Architecture and Engineering Services / Educational Specifications Development - Original and Additional					
4400 Architecture and Engineering Services / Educational Specifications - Improvements		5,393.28	1,813,791.30		
4600 Existing Building Improvement Services		318,892.80	4,115,457.20		
Total Facilities Acquisition, Construction and Improvement Services		\$513,501.38	\$6,067,048.50		
5000 <u>Other Expenditures and Financing Uses</u>					
5100 Debt Service / Other Expenditures and Financing Uses					
5200 Interfund Transfers - Out					
Total Other Expenditures and Financing Uses					
TOTAL ACTUAL EXPENDITURES & OTHER FINANCING USES		\$513,501.38	\$6,360,885.35		

LEA : 125239452 Upper Darby SD

Printed 12/4/2020 10:49:49 AM

	<u>Total</u>
1000 <u>Instruction</u>	
1100 Regular Programs - Elementary / Secondary	90,840,775.40
1200 Special Programs - Elementary / Secondary	41,096,270.40
1300 Vocational Education	1,219,487.19
1400 Other Instructional Programs - Elementary / Secondary	1,815,268.96
1500 Nonpublic School Programs	271,864.00
1600 Adult Education Programs	856,215.00
Total Instruction	\$136,099,880.95
2000 <u>Support Services</u>	
2100 Support Services - Students	7,774,754.85
2200 Support Services - Instructional Staff	8,694,818.67
2300 Support Services - Administration	10,279,204.23
2400 Support Services - Pupil Health	1,759,134.53
2500 Support Services - Business	1,767,147.69
2600 Operation and Maintenance of Plant Services	14,940,680.88
2700 Student Transportation Services	9,665,950.96
2800 Support Services - Central	2,386,991.39
2900 Other Support Services	87,105.00
Total Support Services	\$57,355,788.20
3000 <u>Operation of Non-Instructional Services</u>	
3200 Student Activities	2,228,611.04
3300 Community Services	2,637,658.86
Total Operation of Non-Instructional Services	\$4,866,269.90
4000 <u>Facilities Acquisition, Construction and Improvement Services</u>	
4200 Existing Site Improvement Services	2,008,567.23
4300 Architecture and Engineering Services / Educational Specifications Development - Original and Additional	1,950.00
4400 Architecture and Engineering Services / Educational Specifications - Improvements	1,819,184.58
4600 Existing Building Improvement Services	5,017,601.00
Total Facilities Acquisition, Construction and Improvement Services	\$8,847,302.81
5000 <u>Other Expenditures and Financing Uses</u>	
5100 Debt Service / Other Expenditures and Financing Uses	7,190,106.23
5200 Interfund Transfers - Out	3,150,000.00
Total Other Expenditures and Financing Uses	\$10,340,106.23
TOTAL ACTUAL EXPENDITURES & OTHER FINANCING USES	\$217,509,348.09

LEA : 125239452 Upper Darby SD

Printed 12/4/2020 10:49:57 AM

PSERS Salary Data (Salary Data should relate to the General Fund only)

Amount	Description	Amount
	Total Salary Base for salaries subject to PSERS withholding	86,535,745.46
	Total Federally Funded salaries subject to PSERS withholding	1,811,197.78

Title I Expenditure Data

Amount	Description	Amount
	Expenditures Funded with Current Title I Funds	3,607,667.02
	Expenditures Funded with Carry over Title I Funds	1,290,935.19
Total Title I Expenditure Data		\$4,898,602.21

Benefits for Staff Relative to Collective Bargaining Agreements

	OBJECT	COVERED	NOT COVERED	TOTAL
10 General Fund	No Self Insurance data to report			
	211 Medical Insurance	13,392,237.96	1,021,493.90	14,413,731.86
	212 Dental Insurance	581,573.78	71,262.00	652,835.78
	215 Eye Care Insurance	56,241.59	5,058.00	61,299.59
	216 Prescription Insurance	3,328,376.00	242,653.00	3,571,029.00
	271 Self-Insurance Medical Benefits			
	272 Self-Insurance Dental Benefits			
	275 Self-Insurance Eye Care Benefits			
	276 Self-Insurance Prescription Benefits			
	FUND TOTAL	\$17,358,429.33	\$1,340,466.90	\$18,698,896.23
50 Enterprise Fund	No Self Insurance data to report			
	211 Medical Insurance			
	212 Dental Insurance			
	215 Eye Care Insurance			
	216 Prescription Insurance			
	271 Self-Insurance Medical Benefits			
	272 Self-Insurance Dental Benefits			
	275 Self-Insurance Eye Care Benefits			
	276 Self-Insurance Prescription Benefits			
	FUND TOTAL			
60 Internal Service Fund	No Self Insurance data to report			
	211 Medical Insurance			
	212 Dental Insurance			
	215 Eye Care Insurance			
	216 Prescription Insurance			
	271 Self-Insurance Medical Benefits			
	272 Self-Insurance Dental Benefits			
	275 Self-Insurance Eye Care Benefits			
	276 Self-Insurance Prescription Benefits			
	FUND TOTAL			
Total of All Funds		\$17,358,429.33	\$1,340,466.90	\$18,698,896.23

LEA : 125239452 Upper Darby SD

Printed 12/4/2020 10:50:09 AM

Function	Special Education (Prior Year)	Nonspecial Education (Prior Year)	Total (Prior Year)	Special Education (Current Year)	Nonspecial Education (Current Year)	Total (Current Year)
2120 Guidance Services	457,138.04	2,259,925.75	2,717,063.79	539,547.40	2,666,979.40	3,206,526.80
2140 Psychological Services	1,058,665.06	453,713.64	1,512,378.70	1,018,589.89	436,540.61	1,455,130.50
2150 Speech Pathology and Audiology Services						
2160 Social Work Services	380,843.44	1,748,958.10	2,129,801.54	376,909.90	1,730,125.72	2,107,035.62
2260 Instruction and Curriculum Development Services	807,241.58	1,730,693.69	2,537,935.27	852,658.60	1,827,267.62	2,679,926.22
2350 Legal and Accounting Services	137,888.45	394,462.66	532,351.11	164,024.71	469,231.30	633,256.01
2420 Medical Services	331.88	1,524.12	1,856.00	94.41	433.59	528.00
2440 Nursing Services	282,241.71	1,296,146.65	1,578,388.36	247,238.98	1,135,195.64	1,382,434.62
2700 Student Transportation Services	3,367,256.14	6,137,782.94	9,505,039.08	3,424,259.79	6,241,691.17	9,665,950.96
Total	\$6,491,606.30	\$14,023,207.55	\$20,514,813.85	\$6,623,323.68	\$14,507,465.05	\$21,130,788.73

LEA : 125239452 Upper Darby SD

Printed 12/4/2020 10:50:16 AM

	(PRINCIPAL AMOUNTS ONLY)							
<u>GOVERNMENTAL FUNDS/ ACTIVITIES</u>	Short-Term Borrowing	General Obligation Bonds/Notes	Authority Building Obligations	Other Long-Term Debt	Other Post- Employment Benefits (OPEB)	Compensated Absences	Net Pension Liability	Total
1. Debt at Beginning of Fiscal Year		28,616,333.00	2,156,521.00	4,411,117.00	9,605,930.00	3,004,004.00	292,158,000.00	339,951,905.00
2. Additional Debt Incurred During Year					1,297,063.00	309,917.00	20,673,354.00	22,280,334.00
3. Retirements and Repayments		3,832,190.00	184,809.00	2,050,313.00	1,279,667.00	137,573.00	28,065,354.00	35,549,906.00
4. Debt at End of Fiscal Year		24,784,143.00	1,971,712.00	2,360,804.00	9,623,326.00	3,176,348.00	284,766,000.00	326,682,333.00
5. Accreted Interest at End Of Fiscal Year								
6. Total Debt and Accreted Interest		24,784,143.00	1,971,712.00	2,360,804.00	9,623,326.00	3,176,348.00	284,766,000.00	326,682,333.00
7. Current Portion P&I - Due within 1 year		4,865,145.00	162,371.00	1,994,427.00				7,021,943.00
8. Interest Paid during current fiscal year		1,032,955.00	81,681.00	58,033.00				1,172,669.00

(PRINCIPAL AMOUNTS ONLY)							
<u>PROPRIETARY FUNDS</u>							
1. Debt at Beginning of Fiscal Year							
2. Additional Debt Incurred During Year							
3. Retirements and Repayments							
4. Debt at End of Fiscal Year							
5. Accreted Interest at End Of Fiscal Year							
6. Total Debt and Accreted Interest							
7. Current Portion P&I - Due within 1 year							
8. Interest Paid during current fiscal year							

LEA : 125239452 Upper Darby SD

Printed 12/4/2020 10:50:16 AM

Total Principal and Interest Payments Made by Your School - All Funds

Function	Fund		Principal (910)	Principal (920)	Interest (830)	Total (Principal +Interest)	Misc Other Uses (990)
5110	10	General Fund	5,882,503.79	215,161.00	1,090,987.22	7,188,652.01	
5110	20	Special Revenue Funds					
5110	30	Capital Projects Funds					
5110	40	Debt Service Fund					
5110	90	Permanent Fund					
5120	10	General Fund					
5120	20	Special Revenue Funds					
5120	30	Capital Projects Funds					
5120	40	Debt Service Fund					
Total Debt Payments - Governmental Funds			\$5,882,503.79	\$215,161.00	\$1,090,987.22	\$7,188,652.01	

Function	Fund		Principal (910)	Principal (920)	Interest (830)	Total (Principal +Interest)
5110	50	Enterprise Fund				
5110	60	Internal Service Fund				
5120	50	Enterprise Fund				
5120	60	Internal Service Fund				
Total Debt Payments - Proprietary Funds						

LEA : 125239452 Upper Darby SD

Printed 12/4/2020 10:50:16 AM

Debt Details
Governmental Funds/ Activities

Debt Category	Debt Issue Date (MM/YYYY)	Principal Amounts Only				Current Portion Due Within One Year (Principal and Interest)	Interest Paid During Fiscal Year
		Debt at Beginning of Fiscal Year	Additions	Reductions / Repayments	Debt at End of Fiscal Year		
General Obligation Bonds/Notes – CIB	06/2019	6,465,000.00		385,000.00	6,080,000.00	534,237.00	149,237.00
General Obligation Bonds/Notes – CIB	08/2018	5,000,000.00		5,000.00	4,995,000.00	138,629.00	133,629.00
General Obligation Bonds/Notes – CIB	05/2015	8,440,000.00		2,970,000.00	5,470,000.00	3,320,250.00	350,250.00
General Obligation Bonds/Notes – CIB	07/2014	1,873,000.00		26,000.00	1,847,000.00	65,708.00	39,708.00
General Obligation Bonds/Notes – CIB	12/2012	4,275,000.00		80,000.00	4,195,000.00	166,500.00	86,500.00
General Obligation Bonds/Notes – CIB	11/2011	188,001.00		26,857.00	161,144.00	45,988.00	19,131.00
General Obligation Bonds/Notes – CIB	10/2010	2,375,332.00		339,333.00	2,035,999.00	593,833.00	254,500.00
Authority Building Obligations – CIB	09/2014	770,916.00		54,567.00	716,349.00	45,722.00	28,983.00
Authority Building Obligations – CIB	04/2013	60,047.00		16,170.00	43,877.00	14,995.00	1,142.00
Authority Building Obligations – CIB	12/2011	34,196.00		13,946.00	20,250.00	12,958.00	81.00
Authority Building Obligations – CIB	03/2008	1,291,362.00		100,126.00	1,191,236.00	88,696.00	51,475.00
Other Long Term Debt/Liabilities		4,411,117.00		2,050,313.00	2,360,804.00	1,994,427.00	58,033.00
Compensated Absences		3,004,004.00	309,917.00	137,573.00	3,176,348.00		
Other Post-Employment Benefits (OPEB)		9,605,930.00	1,297,063.00	1,279,667.00	9,623,326.00		
Net Pension Liability		292,158,000.00	20,673,354.00	28,065,354.00	284,766,000.00		
Totals for Debt Entered:		\$339,951,905.00	\$22,280,334.00	\$35,549,906.00	\$326,682,333.00	\$7,021,943.00	\$1,172,669.00

LEA : 125239452 Upper Darby SD

Printed 12/4/2020 10:50:19 AM

General Fund (10)

Section 1: Tuition/Purchased Services as Reported within Expenditure Detail

	Amount
Tuition Reported in General Fund Expenditures 1000-560	19,832,201.62
Purchased Services in General Fund Expenditures 1000-594 and 1000-597	8,616.76
Section 1 Total	\$19,840,818.38

Section 2: Tuition Paid to Institution Types During Fiscal Year

	Tuition Paid For Nonspecial Education	Tuition Paid For Special Education	Total
1 1306 Institutions	213,400.72	2,106,193.10	2,319,593.82
2 Institutionalized Children's Programs		8,616.76	8,616.76
3 Juveniles Incarcerated in Adult Facilities	151,971.10		151,971.10
4 Residential Treatment Facilities		176,276.48	176,276.48
5 Other Local Education Agencies		71,045.21	71,045.21
6 Brick and Mortar Charter Schools	3,634,441.58	1,872,281.11	5,506,722.69
7 Cyber Charter Schools	2,103,142.92	2,010,132.31	4,113,275.23
8 Career and Technology Centers	862,830.19	356,657.00	1,219,487.19
9 Approved Private Schools		1,460,079.62	1,460,079.62
10 PA Chartered Schools for the Deaf and Blind			
11 Private Residential Rehabilitative Institutions			
12 Juvenile Detention Centers	46,682.32	1,484.12	48,166.44
13 Special Program Jointures			
14 Other Tuition Not Included Elsewhere In This Section	836,215.00	3,929,368.84	4,765,583.84
Section 2 Total	\$7,848,683.83	\$11,992,134.55	\$19,840,818.38

1 .	<u>Student Transportation Services for Educational Field Trips</u>	40,935.06
2 .	<u>Student Transportation Services for Student Activities</u>	109,322.61
3 .	<u>Rental of Vehicles for Student Transportation Services</u>	
4 .	<u>Capital Reserve Funds</u>	

Include only district-owned transportation expenditures paid from State or local money.
DO NOT include federal expenditures or payments to contract service providers.
Contracted transportation services should not be recorded on this schedule.

LEA : 125239452 Upper Darby SD

Printed 12/4/2020 10:50:29 AM

Food Service / Cafeteria Operations Fund (51)

3000 Operation of Non-Instructional Services		<u>Total</u>
400 <u>Purchased Property Services</u>		
430	Repairs and Maintenance Services	59,112.84
Total Purchased Property Services		\$59,112.84
500 <u>Other Purchased Services</u>		
570	Food Service Management	5,603,234.20
580	Travel	609.20
Total Other Purchased Services		\$5,603,843.40
600 <u>Supplies</u>		
610	General Supplies	26,835.01
630	Food	361,133.81
Total Supplies		\$387,968.82
700 <u>Property</u>		
740	Depreciation	143,774.19
Total Property		\$143,774.19
900 <u>Other Uses of Funds</u>		
900	Other Uses of Funds	894,035.09
Total Other Uses of Funds		\$894,035.09
Total 3000 Operation of Non-Instructional Services		\$7,088,734.34

LEA : 125239452 Upper Darby SD

Printed 12/4/2020 10:50:29 AM

Food Service / Cafeteria Operations Fund (51)

3100 Food Services	<u>Elementary</u>	<u>Secondary</u>	<u>Federal</u>	<u>Total</u>
400 <u>Purchased Property Services</u>				
430 Repairs and Maintenance Services				59,112.84
Total Purchased Property Services				\$59,112.84
500 <u>Other Purchased Services</u>				
570 Food Service Management				5,603,234.20
580 Travel				609.20
Total Other Purchased Services				\$5,603,843.40
600 <u>Supplies</u>				
610 General Supplies				26,835.01
630 Food			361,133.81	361,133.81
Total Supplies			\$361,133.81	\$387,968.82
700 <u>Property</u>				
740 Depreciation				143,774.19
Total Property				\$143,774.19
900 <u>Other Uses of Funds</u>				
900 Other Uses of Funds				894,035.09
Total Other Uses of Funds				\$894,035.09
Total 3100 Food Services			\$361,133.81	\$7,088,734.34

	<u>Food Service(51)</u>	<u>Child Care Operations(52)</u>	<u>Other Enterprise(58)</u>	<u>Internal Service(60)</u>	<u>Total</u>
3000 <u>Operation of Non-Instructional Services</u>					
3100 Food Services	7,088,734.34				7,088,734.34
Total Operation of Non-Instructional Services	\$7,088,734.34				\$7,088,734.34
TOTAL ACTUAL EXPENDITURES & OTHER FINANCING USES	\$7,088,734.34				\$7,088,734.34

LEA : 125239452 Upper Darby SD

Fund	School	School Number	Local Personnel	Local Nonpersonnel	State Personnel	State Nonpersonnel	Federal Personnel	Federal Nonpersonnel	Total	Explanation
10										
	Aronimink El Sch	1959	2,252,491.76	697,162.83	1,631,114.72	504,842.05	21,264.32	85,731.29	5,192,606.97	
	Beverly Hills MS	1970	9,966,440.86	3,944,521.35	7,217,077.87	2,856,377.53	797,636.33	505,568.90	25,287,622.84	
	Bywood El Sch	1960	3,987,111.54	1,683,376.88	2,877,218.70	1,218,997.05	759,198.52	215,278.95	10,741,181.64	
	Charles Kelly El Sch	7943	2,138,584.35	943,431.01	1,548,630.05	683,174.18	515,534.46	147,307.14	5,976,661.19	
	Drexel Hill MS	1971	9,283,257.96	3,415,989.91	6,722,359.21	2,473,647.87	131,437.65	410,434.81	22,437,127.41	
	Garrettford El Sch	1964	4,429,845.25	1,531,281.30	3,207,818.98	1,108,858.87	46,650.49	187,891.92	10,512,346.81	
	Highland Park El Sch	1965	4,525,805.79	1,893,722.01	3,277,307.64	1,371,315.94	640,852.35	227,182.83	11,936,186.56	
	Hillcrest El Sch	1966	4,854,974.92	1,590,505.94	3,515,671.49	1,151,745.68	62,676.92	193,268.79	11,368,843.74	
	Primos El Sch	7359	3,628,330.68	1,276,091.03	2,627,411.87	924,065.92	50,079.51	148,461.50	8,654,440.51	
	Stonehurst Hills El Sch	1968	3,348,277.71	1,290,016.82	2,424,614.89	926,908.73	734,103.54	194,675.88	8,918,597.57	
	Upper Darby Kdg Ctr	7480	2,229,727.29	1,007,730.28	1,614,630.11	729,735.72	578,808.09	123,937.81	6,284,569.30	
	Upper Darby SHS	1972	26,385,266.32	11,801,321.52	19,106,572.16	8,545,784.54	379,423.01	1,204,420.05	67,422,787.60	
	Walter M Senkow El Sch	7845	1,703,533.61	865,690.66	1,233,593.30	626,879.45	257,191.73	91,561.52	4,778,450.27	
	Westbrook Park El Sch	1969	3,174,600.74	1,204,196.24	2,298,848.81	872,004.17	265,686.45	155,927.02	7,971,263.43	
Total			81,908,248.78	33,145,037.78	59,302,869.80	23,994,337.70	5,240,543.37	3,891,648.41	207,482,685.84	